



**CLIMATE CONTROLS
& SPARES** UK LTD



Refrigeration & Air Conditioning Catalogue 2016



For all your Daikin Spares & Equipment



AIR CONDITIONING				ICE MACHINE SPARES			
DAIKIN EQUIPMENT	95	COPPER TUBE & FITTINGS HVAC		ICE MACHINE CLEANER	40	TRIGGER TORCH-HOLSTER	90
DAIKIN C1 PARTNERSHIP	5	BRASS FLARE FITTINGS - HVAC	11	WHIRLPOOL ICE MACHINE SPARES	45	TURBO 1000 BRAZING SET	90
PORTABLE AIR CONDITIONING	24	COPPER TUBE & COILS	6	LADDERS & HOOVERS		SOLENOID VALVES & COILS	
ACCESS FITTINGS		FITTINGS - HVAC	14-15	LADDERS	25	DANFOSS SOLENOID VALVES	59
CORE REMOVERS	13	INSULATION - PIPE	9-10	HENRY HOOVERS	25	DANFOSS SOLENOID COILS	59
LINE TAPS	13	DEFROST TIMERS		HOOVER BAGS	25	PARKER SOLENOID VALVES	59
VEHICLE CHARGING ADAPTORS	13	BIGATTI TIMER	51	LEAK DETECTION		PARKER SOLENOID COILS	59
ADHESIVES & SEALANTS		GRASSLIN TIMERS	51	DYE CARTRIDGES	88	TEST KITS & MAINTENANCE	
GRIP FILL	38	HEATER TAPES	51	UV-FLUORESCENT LEAK DETECTOR	88	ACID AWAY & TEST KITS	43
ANTI VIBRATION PADS	28	IMMERSION TIMERS	51	LEAK SEALANT	87	EPOXY PUTTY	43
HEAT SINK COMPOUND	43	DRAIN & OVERFLOW PIPE		LEAK DETECTOR SPRAY	87	GLOVES	42-43
SILICONE GREASE	43	DRAIN & WASTE PIPE	44	ELECTRONIC LEAK DETECTORS	87	GREASE (GAS COCK)	43
SILICONE SEALANT	38	DRAIN PIPE FITTINGS	44	MOUNTING FRAMES		GREASE GOBBLER	41
BALL VALVES		DRIERS & SIGHT GLASSES		CONDENSING UNIT BLOCK (PLASTIC)	31	MAINTENANCE STATIONERY	42
DANFOSS BALL VALVES	58	DRIER CORES	56	LIGHTWEIGHT SLABS	28	PRO-FLUSH HVAC FLUSHING KIT	37
BRACKETS GUARDS & DRIP TRAYS		BURNOUT DRIERS	55	FIX IT FOOT	31	PROTECT CORROSION PROTECTOR	39
BRACKETS	27	COPPERSPUN DRIERS	57	H FRAMES	31	QWIK TREAT	41
DRIP TRAYS	27	LIQUID LINE FILTER DRIER	53-54	MULTI FOOT SYSTEM	31	STAYCLEAN STRIPS & TABLETS	41
WALL BRACKETS	27	SIGHT GLASSES	58	MULTI FRAMES	28	THERMOMETERS	50
GUARDS	28	ELECTRICAL		ROOF INLETS	27	TIME SWITCHES-GRASSLIN	
CHANNEL & TRAY		ACCESSORIES	32-34	STEPOVER STAIRS	29	DIN RAIL TIMERS	51
BASKET TRAY	18	BULK HEAD LIGHT	33	STEPOVER FRAMES	29	IMMERSION TIMERS	51
CABLE TRAY	18	CABLE	35	SUPPORT FRAMES	29	TACTIC TIMERS	51
CANTILEVER ARMS	16	CABLE CRIMPS	34	VIBRATION ELIMINATORS	57	THERMOSTATS & PRESSURE SWITCHES	
CHANNEL ACCESSORIES	16-17	CABLE GLANDS	34	OILS & LUBRICANTS		AIR DIFF PRESS SWITCH	32
MOUNTING CHANNEL	8	CABLE TIES	33	PROTITE THREAD SEALANT	12	DANFOSS THERMOSTATS	61
NYLON SCREWED ROD	25	CONNECTOR STRIPS	33	PULL A SPOUT OILER	12	RANCO THERMOSTATS	61
CASSETTE DRAIN ADAPTORS	22	CONTACTORS & OVERLOADS	37	REFRIGERANT OIL	56	DANFOSS PRESSURE SWITCHES	61
CHEMICALS & MAINTENANCE		CAPACITORS	36	VACUUM PUMP OIL	84	RANCO PRESSURE SWITCHES	61
CONDENSIDE CLEANER	40	DATA LOGGER	50	WD40 PENETRATING OIL	37	TOOLS	
COOLSAFE	41	FLEXIBLE CONDUIT	34	PIPE SUPPORT		CHARGING LINES	83
DRAINKLEEN	40	FUSED SPURS	32	BARB CLIPS	22	CHARGING LINE SPARES	83
EASYCARE	39	HEATSHRINK	34	GRIP LOCKS	24	CHARGING SCALES	45
EASYCLEAN	39	JUNCTION BOXES	32-33	INSULCLAMPS	22	CORE DRILL BITS	19
EASYCOAT	39	MCB SINGLE POLE	37	PINCH CLIPS	24	ELECTRONIC CHARGING SCALES	85
EASYFIND	39	MINI TRUNKING	34	PIPE CLIPS	24	FLARE KITS	78
EASYFINISH	39	PHASE PROTECTION DETECTOR	52	QUICK POSITIONING CLIPS	22	GALLO GUN & CARTRIDGES	38
EASYFOAM	39	PLUG TOPS	33	STUD CLIPS	21	GEAR BENDERS	79
EASYFRESH	39	PVC TAPE	33	TWIST NUT CLIPS	21	HACKSAWS	81
EASYWIPES	43	UNIVERSAL RELAYS & OVERLOADS	36	PIPE TIES	22	HAND BENDERS	79
ENDOF LUSH	38	ROTARY ISOLATORS	32	PLUMBING		HAND SAW	81
ENVIROCOIL	39	EXPANSION VALVES & ORIFICES		PLUMBING ACCESSORIES	8	HEX KEY SET	81
HYDROCOIL EVAPORATOR CLEANER	40	DANFOSS EXPANSION VALVES	60	WATER TUBE & FITTINGS	7-8	HYDRAULIC BENDERS	79
HYDROKLEAN CONDENSOR CLEANER	40	DANFOSS ORIFICES	60	REFRIGERATION CONTROLLERS		IMPERIAL TOOL SPARES	78
HYDROSPRAYER	38	EVAPORATOR TRAYS		CAREL CONTROLLERS	50	INSPECTION MIRROR	81
RTU CLEANER	39	CONDENSATE EVAPORATOR TRAY	51	DIXELL UNIVERSAL CONTROLLER	50	MANIFOLD SETS	82
SMELLY JELLY	41	FLOAT SWITCH	51	ELIWELL CONTROLLERS	49-75	MIGHTY BRACKET	25
SUPERCLEAN HEAVY DUTY CLEANER	40	FAN MOTORS & ACCESSORIES		LAE CONTROLLERS	50	MULTI FIN COMB	80
COMPRESSORS		AXIAL FANS	63	PARKER SPORLAN CONTROLLERS	50	REAMERS	79
CUBIGEL COMPRESSORS	66	FAN BLADES	62	REFRIGERATION EQUIPMENT		RECOVERY MACHINES	86
EMBRACO COMPRESSORS	67	FAN RING MOUNTS	62	CARRIER CHILLERS	92	SCREWDRIVER SETS	81
L'UNITE COMPRESSORS	64-65	MULTI-FIT FAN MOTORS	62	JE HALL CELLAR COOLING	93	TORCHES	81
MANEUROP COMPRESSORS	65	FAN SPEED CONTROLLERS	52	CARRIER SPARES	92	TORQUE WRENCH SET	80
ROTALOCK VALVES	65	GUARD MOUNTED FANS	63	JE HALL FUSION CONDENSING UNITS	73-74	TUBE BENDERS	79
CONDENSATE HOSE		TANGENTIAL FANS	63	MAXKOLD EQUIP & SIZING	74-77	TUBE CUTTERS	78
CONDENSATE HOSE & ACC	45	FIXINGS & FASTNERS		RIVACOLD MONOBLOCK SYSTEMS	68	TUBE EXPANDER KITS	81
OVERFLOW DRAIN PIPE	44	EXPANDING BOLTS	19	RIVACOLD EVAPORATORS	69	VACUUM GAUGES	82
CONDENSATE PUMPS		FIXING BAND	19	SAFETY		VACUUM PUMPS	84
MINI CONDENSATE PUMPS	46	HOSE CLIPS	45	HAZARD LABELS	42	WRENCHES	81
PERISTALTIC TUBE KITS	48	PLASTERBOARD FIXINGS	19	LATEX GLOVES	42	TOOLS - ELECTRICAL	
PERISTALTIC PUMPS	47	SCREWS	19	DUST MASKS	42	CRIMPING TOOL	80
SUPERMARKET PUMPS	48	GLYCOL		SOLDERING & BRAZING		INSULATED SCREWDRIVERS	35
TANK PUMPS	48	MEG GLYCOL	38	BRAZING ALLOYS	90	TEST METERS	33
CONSUMABLES		MPG GLYCOL	38	BRAZING MATS	91	TOOLS - POWER	
ABRASIVE PRODUCTS	91	FRIOGEL NEO HEAT PUMP FLUID	38	MAPP GAS	90	DRILLS	80
BATTERIES	32	HEATING CONTROLS		OXYTURBO REFILLS	90	TOOLS - POWER - CONSUMABLES	
BLUE ROLL	43	RADIO FREQUENCY THERMOSTATS	94	NITROGEN PRESSURE GAUGES	85	DRILL BITS	80
FOAM SEALANT	21	THERMOSTATIC RADIATOR VALVES	94	ROFIRE SWIVEL PRO	90	TOOLS - POWER - CONSUMABLES	19
HAND WIPES (HEAVY DUTY)	43	PROGRAMMERS	94	SOLDER AND FLUX - PLUMBING	7-8	SCREWDRIVER BITS	80
		INHIBITOR SILENCER CLEANSER	94	PYROCOOL GEL	91	TRUNKING	
				SUPERFIRE 2 TORCH	90	TRUNKING BBJ	20

Ordering from us is quick and easy. You can order online through our website at www.climatecontrolsandspares.co.uk or by Telephone on **01752 894777**

Orders placed before 3pm will be shipped on a next day delivery.
Standard UK Mainland Next Day Delivery £6.50 + Vat

(Some items due to weight or dimensions may occur additional shipping charges.)

Although we have tried to put a comprehensive range of products in our catalogue If you can't find what you are looking for please contact us and we will be happy to help source any of your requirements. You can also call in Person to our Trade Counter: Unit 3-4 Beech Road Business Park, Beech Road, Cadleigh, Ivybridge, Devon PL21 9HN

Warranty: Full manufacturers warranty is given on all products subject to Standard Terms and Conditions. Full details on Terms and Conditions are available upon request E.&O.E.

If Technical assistance is required with the selection of any replacement items or a detailed quotation for an installation package i.e. Evaporators, Condensing Units, Condensers or a Pipe work layout please contact our technical sales department on 01752 894777 or you can E-Mail: info@climatecontrolsandspares.co.uk

Climate Controls and Spares are a Daikin Distributor. For your Daikin Equipment Price List please contact us and we will send one out to you.

You can also visit our Daikin website at www.daikinonline.co.uk

Quotations for Bulk Purchases and Re-Sellers are available upon request

Prices are correct at the time of going to print but may be subject to change without notice. Where a product is unavailable an equivalent alternative may be offered.

All prices are net and subject to Vat
Terms and Conditions apply
(Available upon request) or from our website)

C1 Partnership

C1 Partnership Scheme

Climate Controls is pleased to announce that the C1 Partnership scheme is now available. This is a special partnership available to our customers who are interested in working in partnership and are committed to developing a mutually beneficial and rewarding business relationship.

The C1 programme is readily available to our loyal customers who want to develop their Daikin equipment sales through Climate Control and Spares.

C1 partnership is guaranteed 'Added Value' to your business whilst providing a boost of confidence for your customers who can be assured they're dealing with a professional company that is serious about the work they carry out and the customers they connect with.

There are many benefits for making the decision to become a C1 Partner and they could greatly aid your business and goals.

- Turnover Rebates
- 5 Year Commercial Warranty*
- Free Listing on our Website and Referrals to end clients
- Priority Service
- Training & Support

For all your Daikin Spares & Equipment



Daikin air conditioning solutions provide comfort all year round for commercial applications ranging from restaurants and offices to shops, hotels and banks.

Daikin air conditioners use renewable energy from the air to reduce fuel bills and CO2 emissions.

Wide product range

Daikin offers the most complete portfolio of products on the market.

Integrated solutions

Daikin's air conditioning range can be combined with heating and ventilation systems, air curtains, refrigeration units and hot water provision to create a fully integrated, easy to control solution.

Trusted support

Daikin offers complete after sales support in each country to bring total comfort and peace of mind to its customers around the world.

Award-winning design

FORM. FUNCTION. REDESIGNED.



Design is everything. It is devotion to design that creates sleek, elegant climate control; smart technology that ensures the ultimate in comfort for contemporary interiors.

AWARD WINNING DESIGN

Daikin Europe N.V. is proud to announce that Daikin Emura has been awarded with Reddot design award 2014. Daikin Emura was evaluated by an international jury that only awards this seal of quality to a project that sets itself apart significantly from comparable projects thanks to its excellent design



reddot award 2014
winner

Copper Tube (Refrigeration Grade)

15 metre coil

Code	Size		Gauge	Net Price
A800	1/4	x	22	£ 9.59
A801	3/8	x	21	16.92
A802	1/2	x	21	23.87
A803	5/8	x	20	32.71
A804	3/4	x	19	45.05
A805	7/8	x	19	54.51

30 metre coil

A806	1/4" o.d.	x	21g	£ 19.18
A807	3/8	x	22	33.85
A808	1/2	x	21	46.19
A809	5/8	x	21	65.41
A810	3/4	x	20	87.63

3 metre straight

A815	3/8" o.d.	x	21g	£ 3.23
A816	1/2	x	20	4.92
A817	5/8	x	20	6.21
A818	3/4	x	19	8.25
A819	7/8	x	18	11.51
A820	1-1/8	x	18	14.99
A821	1-138	x	16	19.32
A822	1-5/8	x	18	22.94
A823	2-1/8	x	18	P.O.A.
A824	2-5/8	x	18	P.O.A.
A825	3-1/8	x	16	P.O.A.
A826	3-5/8	x	16	P.O.A.
A827	4-1/8	x	14	P.O.A.

6 metre straight

A764	3/8" o.d.	x	21g	£ 6.48
A765	1/2	x	20	9.82
A766	5/8	x	20	12.42
A767	3/4	x	19	16.50
A824	7/8	x	18	23.02
A769	1-1/8	x	18	30.00
A770	1-3/8	x	18	38.63
A771	1-5/8	x	18	45.88
A772	2-1/8	x	18	P.O.A.
A781	2-1/8	x	16	P.O.A.
A782	2-1/8	x	14	P.O.A.
A773	2-5/8	x	16	P.O.A.
A783	2-5/8	x	14	P.O.A.
A784	2-5/8	x	12	P.O.A.
A774	3-1/8	x	16	P.O.A.
A785	3-1/8	x	14	P.O.A.
A786	3-1/8	x	12	P.O.A.
A787	3-5/8	x	16	P.O.A.
A788	3-5/8	x	14	P.O.A.
A789	3-5/8	x	12	P.O.A.
A790	4-1/8	x	16	P.O.A.
A791	4-1/8	x	14	P.O.A.
A792	4-1/8	x	12	P.O.A.

Please note: Copper Tube prices are based on the L.M.E. rate and therefore we cannot guarantee to hold these prices.

LAWTON
TUBES

The nations copper specialist



Water Tube and Fittings

Half Hard x 3m Length Water Tube

Code	Size	Net Price
N100	15mm o.d.	£ 4.88
N101	22mm	9.76
N102	28mm	12.38



Solder Elbow

N250	15mm	Copper x Copper	£ 0.17
N251	22mm	Copper x Copper	0.67
N252	28mm	Copper x Copper	0.96
N115	15mm	Fitting x Copper	0.39
N116	22mm	Fitting x Copper	1.27
N117	28mm	Fitting x Copper	3.74



Solder Coupling

N242	15mm	Copper x Copper	£ 0.18
N243	22mm	Copper x Copper	0.49
N244	28mm	Copper x Copper	0.72



Solder Tee

N260	15mm	Copper x Copper	£ 0.44
N261	22mm	Copper x Copper	1.29
N262	28mm	Copper x Copper	1.65



Solder End Cap

N267	15mm	Copper x Copper	£ 0.41
N268	22mm	Copper x Copper	0.64
N269	28mm	Copper x Copper	0.79



Solder Wire

M035	1/2 kg	Solder Wire Tin/Lead	£ 4.75
M036	1/2 kg	Solder Wire Lead Free	9.84



Evaporator Drain Pan Adaptor

Drain Tray Adaptor fits most common evaporators such as Friga Bohn and Luve. Most commonly used with the N167 Brass 22mm to 1" female BSP elbow reducer. (N157 Straight reducer also fits adaptor.)

Code	Description	Net Price
N190	1" Male BSP Drain Outlet Adaptor	£ 12.96



NB: Some of the smaller panel cooler evaporators come with a 3/4" BSP male threaded plastic adaptor. For these outlets please choose the N156 (straight) or N166 (elbow) brass adaptors listed above.

LAWTON
TUBES
The nations copper specialist

Please note: Copper Tube prices are based on the L.M.E. rate and therefore we cannot guarantee to hold these prices

Water Fittings

Compression Coupler

Code	Size		Net Price
N145	15mm	C x C	£ 0.88
N146	22mm		1.51
N147	28mm		2.89



Compression Straight

N150	15mm	x 1/2"	Male BSP	£ 0.74
N151	22mm	x 3/4"		1.21
N152	22mm	x 1"		1.93
N155	15mm	x 1/2"	Female BSP	£0.83
N156	22mm	x 3/4"		1.27
N157	22mm	x 1"		2.22



N157



Compression Elbow

N160	15mm	C x C	£ 0.88	
N161	22mm		1.67	
N162	28mm		3.36	
N165	15mm	x 1/2"	Female BSP	£ 1.64
N167	22mm	x 1"		2.45



N167

Compression Tee

N170	15mm	Equal Tee	£ 1.33
N171	22mm		2.96
N172	28mm		4.44



Accessories

Code	Description	Net Price
M054	PTFE Tape	£ 0.38
M053	Jetlube V2 Plus 300gr	8.78
Q694	Flux Brushes Set 3	2.98
M039	La-Co Flux 475g	9.76
M038	Fernox LSX Leak Seal 50g	4.50
Q001	Rothenberger 15mm Pipe Slice	13.71
Q002	Rothenberger 22mm Pipe Slice	15.60
N415	Rothenberger 59010 10mm PLASTICUT	7.18
N416	Rothenberger 59015 15mm PLASTICUT	7.49
N417	Rothenberger 59022 22mm PLASTICUT	8.21
N418	Rothenberger 59028 28mm PLASTICUT	10.25



For quick, clean and right angled cuts on plastic pipes

Key Features

Fast Cut: Quick cutting with just a few turns

Flexible casing, allows cutting on smaller diameters

Less space required, ideal for hard-to-reach places

No deformation of the pipe: self-clamping and self-alignment

Readjustment not necessary

ROTHENBERGER

Tube Insulation

Class "0" sleeve insulation material. Meets both class "1" and class "0" building regulations to BS 476 parts 6 & 7.



2m Length x 9mm wall

Code	Bore	Lengths/Carton	Net Price
A355	06-9 1/4" i.d.	135	£ 1.09
A356	10-9 3/8	95	1.12
A357	12-9 1/2	85	1.16
A358	15-9 5/8	70	1.19
A359	20-9 3/4	55	1.46
A360	22-9 7/8	50	1.18
A361	28-9 1-1/8	40	1.64
A363	42-9 1-5/8	25	2.48

2m Length x 13mm wall

A366	06-13 1/4" i.d.	72	£ 1.23
A367	10-13 3/8	65	1.31
A368	12-13 1/2	60	1.46
A369	15-13 5/8	50	1.53
A370	20-13 3/4	40	2.78
A371	22-13 7/8	35	1.91
A372	28-13 1-1/8	30	2.17
A373	35-13 1-3/8	24	2.52
A374	42-13 1-5/8	19	3.32
A375	54-13 2-1/8	15	4.08
A376	67-13 2-5/8	13	5.68



2m Length x 19mm wall

A380	10-19 3/8" i.d.	40	£ 1.83
A381	12-19 1/2	35	1.86
A382	15-19 5/8	30	1.93
A383	20-19 3/4	25	2.17
A384	22-19 7/8	22	2.38
A385	28-19 1-1/8	20	3.24
A386	35-19 1-3/8	15	3.76
A387	42-19 1-5/8	14	4.44
A388	54-19 2-1/8	11	6.87
A389	67-19 2-5/8	8	8.26
A390	80-19 3-1/8	7	10.37
A378	89-19 3-5/8	7	11.48



2m Length x 25mm wall

A331	15-25 5/8	18	£ 4.69
A332	20-25 3/4	15	5.04
A333	22-25 7/8	15	5.14
A334	28-25 1-1/8	13	5.82
A335	35-25 1-3/8	11	6.47
A336	42-25 1-5/8	9	6.90
A337	54-25 2-1/8	7	8.13
A338	67-25 2-5/8	5	10.98
A339	76-25 3-1/8	5	12.38
A340	89-25 3-5/8	5	13.66



kaiflex
insulation systems designed to prevent condensation and energy loss

Coiled Insulation

Supplied coiled in a carton to prevent wastage and reduce joints. Coil lengths vary with size – see below.

9 mm wall Boxed

Code	Thickness	Length	Net Price
A310	9 mm x 06mm	40 m	£ 16.06
A312	9 mm x 10mm	34 m	14.59
A313	9 mm x 12mm	31 m	13.40
A314	9 mm x 15mm	27 m	11.90
A315	9 mm x 20mm	20 m	12.77
A316	9 mm x 22mm	19 m	10.84
A317	9 mm x 28mm	14 m	8.58



13 mm wall - 15m Coil in a Bag

Code	Thickness	15m Coils	Net Price
A320	13 mm x 06mm	15 m	£ 8.10
A322	13 mm x 10mm	15 m	8.48
A323	13 mm x 12mm	15 m	8.63
A324	13 mm x 15mm	15 m	8.77
A325	13 mm x 20mm	15 m	9.92
A326	13 mm x 22mm	15 m	10.84
A327	13 mm x 28mm	15 m	12.92



9 mm wall - 15m Coil in a Bag

Code	Thickness	15m Coils	Net Price
A330	9 mm x 06mm	15 m	£ 6.03
A331	9 mm x 10mm	15 m	6.46
A332	9 mm x 12mm	15 m	6.49
A333	9 mm x 15mm	15 m	6.72
A334	9 mm x 20mm	15 m	8.27
A335	9 mm x 22mm	15 m	8.53
A336	9 mm x 28mm	15 m	9.30



1m wide x Roll-Class O

Code	Thickness	Length m	Part No.	Net Price
A400	6 mm	x 30 M	ST-06-E	£ 6.68
A393	9 mm	x 20 M	ST-10-E	7.77
A394	13 mm	x 14 M	ST-13-E	8.52
A395	19 mm	x 10 M	ST-19-E	12.41
A396	25 mm	x 8 M	ST-25-E	16.69
A397	32 mm	x 6 M	ST-32-E	22.56



Adhesive Tape Class O

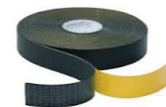
Code	Description	Net Price
A410	10m Roll Insulation Tape	£ 8.13
A411	15m Roll Insulation Tape	9.74

Adhesive

Code	Description	Net Price
A415	250 ml c/w Brush	£ 4.82

Paint

Code	Description	Net Price
A421	3/4 Litre Grey	£ 19.95



Flare Fittings HVAC

Flare Nuts - Short Forged

Code	Size	Type	Net Price
B002	NS4-4 1/4"	Flare Nut	0.73
B004	NS4-6 3/8"	Flare Nut	0.89
B005	NS4-8 1/2"	Flare Nut	1.26
B006	NS4-10 5/8"	Flare Nut	1.71
B007	NS4-12 3/4"	Flare Nut	3.39
B008	NS4-14 7/8"	Flare Nut	4.79



Equal Flare Connectors

Code	Size	Type	Net Price
B020	U2-4 1/4"	Equal Flare Connector	£ 0.78
B022	U2-6 3/8"	Equal Flare Connector	1.45
B023	U2-8 1/2"	Equal Flare Connector	1.74
B024	U2-10 5/8"	Equal Flare Connector	2.65
B025	U2-12 3/4"	Equal Flare Connector	2.85



Flare Cap Nuts

Code	Size	Type	Net Price
B043	N5-4 1/4"	Flare Cap Nut	£ 0.59
B045	N5-6 3/8"	Flare Cap Nut	1.05
B046	N5-8 1/2"	Flare Cap Nut	1.76



Equal Flare Elbow

Code	Size	Type	Net Price
B083	E2-4 1/4"	Equal Flare Elbow	£ 3.57
B084	E2-6 3/8"	Equal Flare Elbow	3.79
B085	E2-8 1/2"	Equal Flare Elbow	4.98
B086	E2-10 5/8"	Equal Flare Elbow	6.75



Flare Reducer, Female x Male Flare

Code	Size	Type	Net Price
B049	UR3-64 3/8"F 1/4"M	Flare Reducer	£ 2.20
B050	UR3-84 1/2"F 1/4"M	Flare Reducer	1.40
B051	UR3-46 1/4"F 3/8"M	Flare Reducer	2.46
B052	UR3-106 5/8"F 3/8"M	Flare Reducer	2.79
B053	UR3-86 1/2"F 3/8"M	Flare Reducer	3.07
B054	UR3-48 1/4"F 1/2"M	Flare Reducer	3.49
B055	UR3-68 3/8"F 1/2"M	Flare Reducer	4.39
B058	U3-10C 5/8"F 3/8"M	Flare Reducer	3.57
B059	UR3-1210 1/2"F 5/8"M	Flare Reducer	3.50
B062	UR3-86 5/8"F 3/4"M	Flare Reducer	5.24



Fusible Plug

Code	Size	Type	Net Price
B108	FP-A 1/8" MPT	Fusible Plug	£ 9.56
B109	FP-B 1/4" MPT	Fusible Plug	9.79
B110	FP-C 3/8" MPT	Fusible Plug	9.98



Flare Fittings HVAC

Swivel Flare Nuts

Code	Size	Type	Net Price
B190	DUS4-4	1/4 Flare x 1/4 Flare Swivel Union	£ 4.89
B191	DUS4-6	3/8 Flare x 3/8 Flare Swivel Union	4.95
B192	DUS4-8	1/2 Flare x 1/2 Flare Swivel Union	4.98



Flare Gasket

Code	Size	Type	Net Price
B123	B2-4	1/4" Flare Gasket	£ 0.28
B124	B2-5	5/16" Flare Gasket	0.55
B125	B2-6	3/8" Flare Gasket	0.45
B126	B2-8	1/2" Flare Gasket	0.47
B127	B2-10	5/8" Flare Gasket	0.49
B128	B2-12	3/4" Flare Gasket	0.48
B129	B2-14	7/8" Flare Gasket	0.65



Equal Flare Tee

Code	Size	Type	Net Price
B133	T2-4	1/4" Equal Flare Tee	£ 2.53
B135	T2-6	3/8" Equal Flare Tee	2.59
B136	T2-8	1/2" Equal Flare Tee	3.05
B137	T2-10	5/8" Equal Flare Tee	3.49



Flare Tee, Branch Increasing

Code	Size	Type	Net Price
B140	TR2-46	1/4" x 3/8"	£ 7.06



Thread Sealant and Lubricants

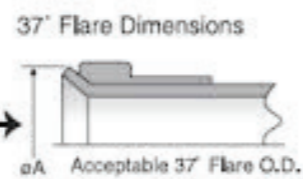
Pro-Tite adheres to internal surfaces, fills voids while forming a flexible fluid tight seal

Code	Size	Type	Net Price
B197	CLL-1	Pro-Tite Thread Sealant	£ 3.18
M171	CO-1	Pull a Spout Oiler 120ml	3.28



Pull a Spout Oiler contains four ounces of finest quality carbon free, rust and oxidation inhibited lubricating oil

Inch Tube O.D. (in.)	Metric Tube O.D. (mm)	37° Flare Diameter OA (in.)
1/4	6	.340/.360
5/16	8	.400/.430
3/8	10	.460/.490
1/2	12	.630/.660
5/8	15 & 16	.760/.790
3/4	18 & 20	.920/.950
1	25	1.170/1.200
1 1/4	30 & 32	1.480/1.510
1 1/2	38	1.700/1.730



Line Taps

Code	Type	Net Price
P008	Line Tap BPV-31 1/4, 5/16, 3/8" (shown)	£ 3.86
P010	LT3G Line Tap Valve 3/16"	3.25
P011	LT4G Line Tap Valve 1/4"	3.49
P012	LT5G Line Tap Valve 5/16"	4.69
P013	LT-6G Line Tap Valve 3/8"	8.13
P016	CV-1G Control Valve	5.19
P022	Diversitech Quick Tap QTH-1	2.98



Access Fittings

Code	Type	Net Price
P034	Schraeder CU Solder 1/4" EXT (shown)	£ 1.30
P039	1/4" Flare Tee Access on Branch VST-44	3.43
P040	1/4" Flare Tee Access on Run	3.25
P041	VCR-04 Quick Cap 1/4" Flare Cap	0.59



Core Removers

Code	Type	Net Price
P042	PACK OF 10 Spare Schraeders	£ 1.59
P100	Core Remover c/w Spare Cores (shown)	8.75
P105	ITE MV3900 Core Removal Tool (shown)	57.78

Model P100 is a simple core remover with spare cores in the lid.

The MV3900 tool allows the removal and replacement of the core without losing the refrigerant. It can also be used to charge through an access fitting with the core removed. This speeds up evacuation and charging considerably.



Cylinder Adaptors

Code	Description	Net Price
M012	GB-4C Brass Cylinder Adaptor	£ 3.25
M014	Nylon Cylinder Adaptor	2.95
M016	Valve to suit R600A/R290	19.97



Vehicle Charging Adaptors

Code	Description	Net Price
Q520	254-A Low Side Coupler	£ 13.97
Q521	253-A High Side Coupler	13.97



Solder Fittings HVAC

90°Elbow, Short Radius

Code	Size	Type	Net Price
B201	CxC 3/8"	90°Elbow SR	£ 0.54
B202	CxC 1/2"	90°Elbow SR	0.52
B203	CxC 5/8"	90°Elbow SR	0.72
B204	CxC 3/4"	90°Elbow SR	1.28
B205	CxC 7/8"	90°Elbow SR	1.08
B206	CxC 1-1/8"	90°Elbow SR	1.33
B207	CxC 1-3/8"	90°Elbow SR	1.93

90°Bend, Long Radius

B214	U2-4 1/4"	90°Elbow LR	£ 1.28
B215	U2-6 3/8"	90°Elbow LR	0.90
B216	U2-8 1/2"	90°Elbow LR	1.03
B217	U2-10 5/8"	90°Elbow LR	0.97
B218	U2-12 3/4"	90°Elbow LR	1.33
B219	7/8"	90°Elbow LR	1.39
B220	1-1/8"	90°Elbow LR	2.20
B221	1-3/8"	90°Elbow LR	3.55

90°Bend, Fitting x Copper

B230	N5-4 1/2"	90°Bend FxC	£ 1.55
B231	N5-6 5/8"	90°Bend FxC	1.87
B232	N5-8 3/4"	90°Bend FxC	2.21
B233	7/8"	90°Bend FxC	2.32
B234	1-1/8"	90°Bend FxC	3.71

Equal Tee

B340	E2-4 1/4"	Equal Tee	£ 1.10
B341	E2-6 3/8"	Equal Tee	1.08
B342	E2-8 1/2"	Equal Tee	1.26
B343	E2-10 5/8"	Equal Tee	0.67
B344	3/4"	Equal Tee	2.54
B345	7/8"	Equal Tee	1.39
B346	1-1/8"	Equal Tee	2.93

Coupling

B355	UR3-64 1/4"	Coupling	£ 0.16
B356	UR3-84 3/8"	Coupling	0.17
B357	UR3-46 1/2"	Coupling	0.23
B358	UR3-106 5/8"	Coupling	0.34
B359	UR3-86 3/4"	Coupling	0.52
B360	UR3-48 7/8"	Coupling	0.63
B361	UR3-68 1-1/8"	Coupling	0.85
B362	U3-10C 1-3/8"	Coupling	1.26
B363	1-5/8"	Coupling	2.00
B364	2-1/8"	Coupling	3.47
B365	2-5/8"	Coupling	5.40
B366	3-1/8"	Coupling	9.65

LAWTON
TUBES

The nations copper specialist



Solder Fittings HVAC

Reducer – Fitting to Copper (F x C)

Code	Size	Type	Net Price
B255	FxC 3/8" x 1/4"	Reducer	£ 0.49
B256	1/2" x 3/8"	Reducer	0.54
B257	1/2" x 3/4"	Reducer	0.65
B258	5/8" x 1/2"	Reducer	0.49
B259	5/8" x 3/8"	Reducer	0.49
B260	3/4" x 5/8"	Reducer	1.01
B261	3/4" x 1/2"	Reducer	1.01
B262	7/8" x 3/4"	Reducer	0.74
B263	7/8" x 5/8"	Reducer	0.74
B264	7/8" x 1/2"	Reducer	0.74
B265	1-1/8" x 7/8"	Reducer	1.21
B266	1-1/8" x 3/4"	Reducer	1.21
B267	1-1/8" x 5/8"	Reducer	1.21
B268	1-1/8" x 1/2"	Reducer	1.21
B269	1-3/8" x 1-1/8"	Reducer	1.93
B270	1-3/8" x 7/8"	Reducer	1.93
B272	1-5/8" x 1-3/8"	Reducer	2.54
B276	2-1/8" x 1-5/8"	Reducer	4.75
B277	2-1/8" x 1-3/8"	Reducer	4.75
B282	3-1/8" x 2-5/8"	Reducer	12.08

Reducer - Copper to Copper (C x C)

B286	1/2" x 3/8"	Reducer	£ 0.38
B289	5/8" x 3/8"	Reducer	0.41
B293	7/8" x 5/8"	Reducer	0.70
B295	1-1/8" x 7/8"	Reducer	1.19
B297	1-1/8" x 5/8"	Reducer	1.19
B298	1-1/8" x 1/2"	Reducer	1.19
B299	1-3/8" x 1-1/8"	Reducer	1.67
B302	1-5/8" x 1-1/8"	Reducer	2.93
B305	2-5/8" x 2-1/8"	Reducer	10.03

45°Bend

B330	5/8"	45°Bend	£ 0.43
B331	3/4"	45°Bend	2.14
B332	7/8"	45°Bend	1.80
B333	1-1/8"	45°Bend	1.78
B334	1-3/8"	45°Bend	2.59

End Cap

B389	3/8"	End Cap	£ 0.28
B390	1/2"	End Cap	0.36
B391	5/8"	End Cap	0.38
B392	3/4"	End Cap	0.41
B393	7/8"	End Cap	0.43
B394	1-1/8"	End Cap	0.77
B395	1-3/8"	End Cap	1.08

LAWTON
TUBES

The nations copper specialist



Mounting Channel

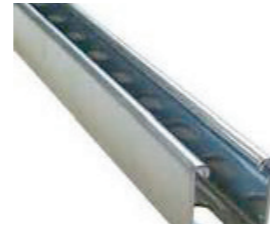
Aluminium Plain Channel

Code	To suit	Dimensions	Net Price
A600	3 metre x Channel	22 x 41mm	£ 8.87



Pre Galvanised Slotted Channel

A603	3 metre x CN21A3 Medium Gauge	21 x 41mm	£ 7.49
A605	3 metre x CN41A3 Medium Gauge	41 x 41mm	£ 10.68



Channel Capping

A612	CZ21/B 21 x 41mm Black PVC End Cap	0.21
A613	CZ41/B 41 x 41mm Black PVC End Cap	0.32



Cantilever Arms

Code	Type	Max Load *	Net Price
A614	SCT-150 mm Long	836 kg	£ 4.17
A616	SCT-300	418	5.79
A617	SCT-450	275	5.52
A618	SCT-600	209	7.19
A619	SCT-750	167	9.48
A620	SCT-900	110	22.64
A622	600mm Double Cantilever Arm		12.53
A623	750mm Webbed Cantilever Arm		14.23



* = Uniformly distributed load (Kgf)

Channel Accessories

3 metre Length Threaded Rod

Code	Type	Diameter	Net Price
A629	TR-083	8	£ 1.94
A630	TR-103	10	3.77
A631	TR-123	12	4.56



Lightweight Beam Clamp

A632	BD-10	2.52
------	-------	------



Spring Loaded Channel Nuts

A634	SNS 08	8	0.14
A646	SNS 10	10	0.21
A636	SNS 12	12	0.29
A639	SNL 08	8	0.16
A640	SNL 10	10	0.22
A641	SNL 12	12	0.31



Use SNS (Short Spring) for 21 mm deep channel.
Use SNL (Long Spring) for 41 mm.

Channel Accessories

Plain Channel Nuts

Code	Type	Dimensions	Net Price
A643	SNA 06	6 mm	£ 0.13
A644	SNA 08	8	0.14
A645	SNA 10	10	0.16
A646	SNA 12	12	0.19



HT Set Screws

A648	HS 625	6mm x 25 mm Long	£ 0.14
A650	HS 825	8mm x 25	0.19
A652	HS1020	10mm x 20	0.24
A654	HS1030	10mm x 30	0.33
A656	HS1230	12mm x 25	0.52
A658	HS1240	12mm x 25	0.57



Hexigon Nuts

A660	HEX 6	6 mm	£ 0.10
A661	HEX 8	8	0.10
A662	HEX 10	10	0.15
A663	HEX 12	12	0.20



Flat Washers

A665	FW 6	6 mm	£ 0.05
A666	FW 8	8	0.05
A667	FW 10	10	0.05
A668	FW 12	12	0.10



Shakeproof Washers

A670	SPW 6	6 mm	£ 0.05
A671	SPW 8	8	0.05
A672	SPW10	10	0.10
A673	SPW12	12	0.10



Penny Washers

A675	PW25 6	6mm x 25 mm long	£ 0.05
A676	PW25 8	8mm x 25	0.07
A677	PW32 8	10mm x 32	0.08
A678	PW25 10	10mm x 25	0.09
A679	PW32 10	12mm x 32	0.10



Adaptor Plates

A682	CS1/10	One Hole	40 x 40 mm	£ 0.31
A683	CS2	Two Hole	87 x 40 mm	0.65
A684	CS3	Three Hole	123 x 40 mm	0.85
A687	CS7	Three Hole	Flat Angle	1.53
A690	CS8	Four Hole	Flat Tee	1.94
A692	CS12	Two Hole	Angle	0.70
A693	CS13	Three Hole	Angle	1.00



Roofing Nuts and Bolts (Pack of 100)

A580	M6 x 12	£ 4.49
A581	M6 x 20	4.49
A582	M6 x 40	4.49
A583	M8 x 25	8.57
A584	M8 x 50	12.86



Threaded Rod Connectors

A624	M6	£ 0.15
A625	M8	0.15
A626	M10	0.15



Cable Tray

Pre-galvanised cable tray. Medium duty tray has a return flange for extra strength.

3 Metre Length – Light Duty

Code	Size	Net Price
A490	50 mm wide x 12mm flange	£ 5.99
A491	75 mm	7.74
A492	100 mm	9.61
A493	150 mm	12.86



3 Metre Length – Medium Duty

A501	100 mm wide x 25mm flange	8.68
A502	150 mm	13.77
A503	225 mm	20.25
A504	300 mm	27.36



Coupling Kits

A520	Coupling Kit for 25mm Tray	£ 2.29
------	----------------------------	--------

Basket Tray 55mm Width x 3m

Basket tray is constructed from mesh wire and offers a much lighter installation than conventional cable tray.

Code	Width	Net Price
A010	60 mm	£7.95
A011	100 mm	8.79
A012	150 mm	9.98
A013	200 mm	19.54
A014	300 mm	22.15
A015	400 mm	30.08
A016	500 mm	38.69
A017	600 mm	47.02



Basket Tray Accessories - Pensa-Rejiband Cable Management

Quick Fit Connector (each)

Code	Model	To Fit	Net Price
A020	64020061	60 to 150 2 Required 200 to 300 2+1 Required 400 to 600 2+2 Required	£ 0.90



Click Connector (each)

A028	64020030	60 to 150 2 Required 200 to 300 2+1 Required 400 to 600 2+2 Required	£ 1.28
------	----------	--	--------



Fast Clip Connector (each)

A030	64020072	Easy and quick making of curves.	£ 0.69
------	----------	----------------------------------	--------

M8 M10 Click Central Suspension (each)

A035	67020043	8-10mm Rod	£ 2.43
------	----------	------------	--------

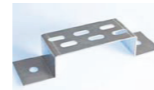
Side Support 60

A036	62021060	For fixing 60x60 to the wall or suspending on a rod	£ 1.61
------	----------	---	--------



Stand Off Bracket (each)

A045	67020520	100mm Bracket	£ 3.38
A046	67020522	200mm	4.53
A047	67020524	300mm	5.47



Universal Support Bracket (each)

A060	62021104	100mm Universal Bracket	£ 3.88
A061	62021154	150mm Universal Bracket	3.42
A062	62021204	200mm Universal Bracket	3.77
A063	62021304	300mm Universal Bracket	4.49
A064	62021404	400mm Universal Bracket	



Bends, Tees, Risers, Reducers and Cross Overs are also available

Fixings

Expanding Bolts

Code	Model	Style	Net Price
A570	M8-10P	Thunder Bolt each	£ 1.07
A569	M10-10P	Thunder Bolt each	1.92
A571	M8-10L	Rawl Bolt Type each	0.99
A572	M10-10L	Rawl Bolt Type each	1.20
A574	WA-8	Wedge Anchor	0.32
A575	WA-10	Wedge Anchor	0.38



Self Tapping Screws BZP P/H Cross (Pack of 200)

A565	3/4" x No 8	Self Tappers BZP P/H Cross	£ 10.70
A567	1" x No 8	Self Tappers BZP P/H Cross	13.75
A568	1-1/4" x No 8	Self Tappers BZP P/H Cross	18.09
A569		615 pcs Selection Kit	23.95



Plasterboard Fixings (Pack of 100)

A698	38 mm Long	Zinc Alloy complete with Screws	£ 15.81
------	------------	---------------------------------	---------



Wood Screws (Pack of 200)

A575	3.5 X 16 STL PZ CSK Chipboard	Screw No.(6 x 5/8")	£ 2.43
A576	3.5 X 30 STL PZ CSK Chipboard	Screw No.(6 x 1-1/4")	2.57
A584	4 X 20 STL PZ CSK Chipboard	Screw No.(8 x 1")	1.95
A586	4 X 40 STL PZ CSK Chipboard	Screw No.(8 x 1-1/2")	2.43
A590	5 X 40 STL PZ CSK Chipboard	Screw No.(10 x 1-1/2")	3.54
A593	5 X 50 STL PZ CSK Chipboard	Screw No.(10 x 2")	4.54
A595	5 X 60 STL PZ CSK Chipboard	Screw No.(10 x 2-1/2")	5.73



Vortex Screws (Pack 200) Hardwood, MDF and Decking. Wood to Plastic or Sheet Metal

A584V	4 X 20 STL PZ CSK Vortex Screw No.(8 x 1")	£ 2.98
A586V	4 X 40 STL PZ CSK Vortex Screw No.(8 x 1-1/2")	5.16
A589V	5 X 30 STL PZ CSK Vortex Screw No.(10 x 1-1/4")	5.49
A590V	5 X 30 STL PZ CSK Vortex Screw No.10 x (1-1/2")	6.67



Plastic Wall Plugs (Pack of 1000)

A595	Talon Red Plug	To suit Screw Sizes 6, 8 and 10	£ 4.93
A598	Talon Brown Plug	To suit Screw Sizes 10, 12 and 14	7.23



All Round Band Fastening 10M Roll x 17mm wide

L400	ARB17-GALV	Galvanised Fixing Band	£10.15
L402	ARB17-BLK	Black PVC Fixing Band	10.79



Drill Bits

Code	Description	Net Price
Q415	Rothenberger Flat Wood Bit 10mm	£ 4.79
Q416	Rothenberger Flat Wood Bit 13mm	4.85
Q417	Rothenberger Flat Wood Bit 16mm	5.57
Q418	Rothenberger Flat Wood Bit 19mm	5.97
Q419	Rothenberger Flat Wood Bit 22mm	5.80
Q420	Rothenberger Flat Wood Bit 25mm	6.06
Q441	Rothenberger HSS Drill Bit Set 19pcs 1mm/10mm Titanium	23.21
Q444	SDS Drill Bit Set 5pce	8.49
Q446	SDS Drill Bit 5.5 mm x 160 mm	1.64
Q447	SDS Drill Bit 7.0 mm x 160 mm	1.79
Q448	Drill Bit Masonry 5.5mm x 150 mm	1.76
Q449	Drill Bit Masonry 7.0mm x 150 mm	1.76
Q450	Rothenberger 6" No.10 Drill Bit Masonry 5.5mm x 150 mm	2.77
Q451	Rothenberger 6" No.14 Drill Bit Masonry 7.0 x 150mm	3.35
Q465	Rothenberger Dry Diamond Core Drill Set 89023	118.95
Q003	Rothenberger 9pce Holesaw Kit 114202	28.61



BBJ Trunking


Duct End Cap

Code	Part No.	Description	Net Price	
A914	B6029	DC-70 Duct Cap	£ 2.15	
A915	B6028	DC-105 Duct Cap	2.60	


Outlet Cover

A916	B6050	WC-70 Outlet Cover	£ 4.98	
A917	B6049	WC-105 Outlet Cover	8.49	

Flat Bend

A921	B6039	FB-70 Flat Bend - Horizontal	£ 4.50	
A922	B6038	FB-105 Flat Bend - Horizontal	8.43	

Internal Elbow

A926	B6035	EB-70 Internal Elbow - Vertical	£ 3.98	
A927	B6034	EB-105 Internal Elbow - Vertical	8.64	

Sockets

A931	B6025	CP-70 Socket	£ 1.66	
A932	B6022	CP-105 Socket	3.29	


T-Joint

A935	B6788	TJ-105 T-Joint	£ 17.69	
------	-------	----------------	---------	---

Flexible Joint

A939	B6043	FJ-70 Flexible Joint	£ 3.18	
A940	B6042	FJ-105 Flexible Joint	6.32	

Duct End

A952	B6031	DE-70 Duct End	£ 3.44	
A953	B6030	DE-70 Duct End	4.10	

External Bend

A954	B6037	EIN-70 Exterior Corner	£ 3.75	
A955	B6038	EIN-105 Exterior Corner	8.97	

Wall Rosette

A970	B6053	WR-70 Wall Rosette	£ 2.38	
A971	B6052	WR-105 Wall Rosette	2.77	

Reducer Joint

A968	B6046	Reducer Joint	£ 3.05	
------	-------	---------------	--------	---

Straight Lengths

A911	B6027	D-70 Straight Duct	£ 13.53	
A912	B6026	D-105 Straight Duct	16.94	



Duct Sealing

Duct sealing tape is an all purpose cloth reinforced tape, 2" wide.

Code	Style	Length	Net Price
A119	Duct Tape	180 FT.	£5.44
A199	Diversigum Sealing Compound	0.5kg	2.95



Polyurethane Foam

Code	Description	Net Price
A133	Foam Sealant (568 ml Aerosol)	£7.99



Twist Nut Clips for Unistrut Channel or Threaded Rod

Suitable for use on vertical or horizontal channel and tested for temperatures between -40 and +140 °C.

Wall plugs are not recommended for use in the ceiling!



Channel Clip to suit 41 mm channel (Supplied in Packs of Ten)

Code	Description	Net Price
A522	B6842 1/4" 6mm Channel Clip	£ 5.83
A523	B6844 3/8" 9mm Channel Clip	5.83
A524	B6843 1/2" 13mm Channel Clip	6.30
A525	B6845 5/8" 16mm Channel Clip	6.73
A526	B6846 3/4" 19mm Channel Clip	7.18
A527	B6847 7/8" 22mm Channel Clip	7.78
A528	B6848 1" 25mm Channel Clip	8.22
A529	B6849 1-1/8" 28mm Channel Clip	8.67
A530	B6850 1-1/4" 32mm Channel Clip	9.72
A531	B6851 1-3/8" 35mm Channel Clip	10.61
A532	B6852 1-1/2" 38mm Channel Clip	11.51
A533	B6853 1-5/8" 35mm Channel Clip	12.56
A534	B6854 2" 50mm Channel Clip	13.46
A535	B6855 2-1/8" 55mm Channel Clip	14.50



Stud Clip to suit 8 mm Threaded Rod

Aspen Xtra Stud Clips have a secure and lockable fastening mechanism, allowing quick and easy fixing with the simple fit and twist action. The unique ratchet design ensures that the clip remains closed when insulated pipe is squeezed against the wall of the clip. The clips are also easy to remove and relocate for maintenance.

Code	Description	Net Price
A536	B6800 1/4" 6mm Stud Clip	£ 5.79
A537	B6802 3/8" 9mm Stud Clip	5.79
A538	B6801 1/2" 13mm Stud Clip	5.99
A539	B6803 5/8" 16mm Stud Clip	6.20
A540	B6804 3/4" 19mm Stud Clip	6.41
A541	B6805 7/8" 22mm Stud Clip	6.62
A542	B6806 1" 25mm Stud Clip	6.79
A543	B6807 1-1/8" 28mm Stud Clip	7.03
A544	B6808 1-1/4" 32mm Stud Clip	8.27
A545	B6809 1-3/8" 35mm Stud Clip	8.27
A546	B6810 1-1/2" 38mm Stud Clip	9.30
A547	B6811 1-5/8" 35mm Stud Clip	10.34
A548	B6812 2" 50mm Stud Clip	11.54



Stud Clips

Aspen Xtra Stud Clips have a secure and lockable fastening mechanism, allowing quick and easy fixing with the simple fit and twist action. The unique ratchet design ensures that the clip remains closed when insulated pipe is squeezed against the wall of the clip. The clips are also easy to remove and relocate for maintenance.

Stud Clip to suit 10 mm Threaded Rod Supplied in packs of ten

Code	Model	Net Price
A523	B6814 1/4" Stud Clip Bag 10	£ 5.79
A524	B6815 3/8" Stud Clip	5.79
A525	B6816 1/2" Stud Clip	5.99
A526	B6817 5/8" Stud Clip	6.20
A527	B6818 3/4" Stud Clip	6.41
A528	B6819 7/8" Stud Clip	6.62
A529	B6820 1" Stud Clip	6.79
A530	B6821 1-1/8" Stud Clip	7.03
A531	B6822 1-1/4" Stud Clip	8.27
A532	B6823 1-3/8" Stud Clip	8.27
A533	B6824 1-1/2" Stud Clip	9.30
A534	B6825 1-5/8" Stud Clip	10.34
A535	B6826 2" Stud Clip	11.54



Barb Clips Pack 10

Code	Model	Net Price
A550	B7006 7/8" Barb Clip	6.72
A551	B7008 1-1/8" Barb Clip	7.07
A552	B7009 1-1/4" Barb Clip	8.44
A553	B7010 1-3/8" Barb Clip	8.44
A554	B7300 2 Pipe Barb Clip PK 5	7.32



Aspen Xtra Pipe Ties

Aspen Xtra Pipe Ties are great for multiple pipework routes. These simple ties can be fixed easily and directly to a wall. There are 4 different lengths of cable ties to suit various pipe diameters.

Tie Bands Pack 10

Code	Model	Net Price
ACBT250	B6651 T250 BLACK BIG TIE BANDS	£ 4.99
ACBT300	B6652 T300 BLACK BIG TIE BANDS	5.20
ACBT350	B6553 T350 BLACK BIG TIE BANDS	5.51
ACBT450	B6554 T400 BLACK BIG TIE BANDS	7.23



Xtra Quick Positioning Clips

BBJ QPC Clips are a easy to use pipe clip made from UV resistant plastic. They fit into both aluminium or unistrut channel with one single twist.



Supplied in packs of ten

Code	Model	Net Price
A250	B6445 1/4" Quick Positioning Clip	£ 5.83
A251	B6447 3/8" Quick Positioning Clip	5.98
A252	B6444 1/2" Quick Positioning Clip	6.13
A253	B6448 5/8" Quick Positioning Clip	6.28
A254	B6446 3/4" Quick Positioning Clip	6.43
A255	B6449 7/8" Quick Positioning Clip	6.58
A257	B6442 1-1/8" Quick Positioning Clip	6.73
A258	B6443 1-3/8" Quick Positioning Clip	6.88
A259	B6538 1-5/8" Quick Positioning Clip	7.18

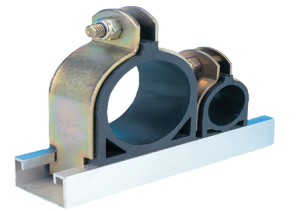


Insulclamps

Insulclamps to fit 41 mm aluminium or galvanised steel channel.

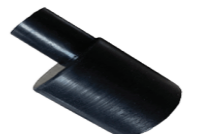
Supplied in packs of ten

Code	To Suit	Net Price
A199	1/4" B6268 Tube Clamp	£ 6.72
A201	3/8" B6274 Tube Clamp	6.72
A202	1/2" B6267 Tube Clamp	6.72
A203	5/8" B6276 Tube Clamp	6.72
A204	3/4" B6273 Tube Clamp	7.75
A205	7/8" B6277 Tube Clamp	9.13
A206	1-1/8" B6264 Tube Clamp	10.86
A207	1-3/8" B6265 Tube Clamp	13.44
A208	1-5/8" B6266 Tube Clamp	16.37



Xtra Accessories

N740		Xtra Accessories Kit	£ 57.00
N7401	FP2011	Rubber Adaptor 16-21mm Fits MHI Bag 3	5.69
N7402	FP2012	Rubber Adaptor to connect a cassette unit 26-21mm Daikin, Mitsu Elec, Panasonic, Bag 3	6.20
N7403	FP2013	Rubber Adaptor to connect a cassette unit 32-21mm Daikin, Mitsu Elec, Pan	6.72
N7405	FP2016	Rubber Adaptor to connect a cassette unit 21-25mm to connect 21mm overflow to waste	5.69
N730	FP2030	Hose to Overflow or Waste/Soil Pipe	12.92
N7501	FP2040	Hose to Overflow or Waste/Soil Pipe	4.06



3 Pipe Clips BBJ

Aspen 3 Pipe Clips. Brand new uniquely designed 3 pipe clip, providing support for VRV/VRF systems pipework.

Clamps for mounting on 10mm threaded rod. Pack 5

Code	Model	To suit	Net Price
A903	Size 1	3/8 5/8 3/4 to 1/2 3/4 1"	£ 10.34
A9030	Size 2	1/2 1-1/8 3/4" to 5/8 1" 1-1/8	11.37
A9031	Size 3	7/8 1-3/8 1-1/8" to 3/4 1-5/8 1-3/8	12.58
A9032	Size 4	1/2 1-3/8 1-1/8" to 3/4 1-5/8 1-3/8	13.61



Aspen Xtra Pinch Clips

These supports fit onto either 8mm or 10mm threaded rod. By simply squeezing the tips together, the spring steel rod hanger can be fitted or adjusted in seconds, even after the refrigerant pipes have been installed.

Supplied in packs of Ten.

Code	Model	To suit	Net Price
A900	B6561	1/2 & 7/8 Pack 10	£ 15.85
A901	B6562	5/8 & 1-1/8	17.57
A902	B6563	3/4 & 1-3/8	19.29



Aspen Xtra Grip Locks

These supports are particularly good for installers who, when installing the first pipe, can hold it within the Grip Lock whilst installing the second pipe. Grip Locks are simple metal pipe clips that hold both liquid and gas lines. Designed to be fitted directly to the wall or solid ceiling, they can hold insulated pipes without a break in the insulation.

Code	Model	To suit	Net Price
ACB6186	Size1	1/4 & 1/2 Pack 10	£ 7.38
ACB6187	Size 2	3/8 & 5/8	7.70
ACB6188	Size 3	1/2 & 7/8	7.01
ACB6189	Size 4	5/8 & 1-1/8	8.31



Aspen® Xtra Portable Air Conditioning Unit

A portable AC unit with airflow adjustment, sleep & eco settings and a timer mode, meaning you can keep at a comfortable temperature wherever you are!

Code	Description	Net Price
U990	Mobile Air Conditioning Unit (Cooling Only)	£ 279.00
U991	Mobile Air Conditioning Unit (Heating & Cooling)	320.00



Xtra
the installer's choice

Nylon Screwed Rod

Code	Size	Net Price
A450	M10 x 1M Screwed Rod	£ 4.39
A451	M12 x 1M Screwed Rod	5.51
A455	M10 Washer Faced Nut	£ 0.19
A456	M12 Washer Faced Nut	0.21



Recommended maximum safe working loads for Nylon Threaded Rod.
M10 - 80kg M12 - 120kg

Please note figures quoted are for vertical loads only. No data is available for inclined or horizontal loads. Care should be taken not to over tighten nuts, they should be tightened by hand and then given half a turn with a spanner.

Mighty Bracket

The Mighty Bracket™ clips to the mounting plate of most mini-split brands in order to hold unit securely in place during installation - without damaging walls.

Code	Type	Net Price
Q950	Mighty Bracket	£ 114.84



Maximum lift = 45 kgs

Ladders & Hoovers

Code	Size	Net Price
Q951	Telescopic Ladder 3.8m with Carry Case	£ 115.95
Q900	Numatic Henry Vacuum Cleaner	109.50
Q901	NVM-ICH Henry Vacuum Cleaner Bags (Each)	0.95



Telescopic Ladder extends to 3.8m and is made of Lightweight Aluminium. Includes Carry Case

Air to Water Condensing Unit Brackets

These brackets are fitted with an integral, removable spirit level to make correct installation of the crossbar easier.

Code	Type	Net Price
A309	TYPE 2- 250 kgs Bracket Extra Large 3 Arms	£ 96.95



Dimensions	A309
Crossbar	1050mm
Upright	550
Support Arm	660
Max. Load	250 kgs



Brand new bracket in stock... The B-QUIK!

This bracket provides it all – easy installation and easy maintenance for your customers, and more importantly – high margin opportunities and less SKUs for you! Part of the Aspen Xtra one-stop-shop.

- Mild steel, hot dipped galvanised & powder coated conforms to ISO 09227 corrosion test
- Heavy gauge for added strength
- Integrated spirit level for easy install
- Interlocking design part assembled makes for fast installation
- Anti vibration pads as standard
- Easy levelling on uneven walls with adjustable bolt
- Bracket can be mounted via horizontal wall bar, or directly to the wall as bracket arm pairs
- High quality fixings supplied for secure installation
- 2 sizes to cover all applications



Adjustment bolt provides up to 5° of correction



Integrated spirit level (patented)



Anti vibration pads as standard with captive nut



Interlocking design for fast install



Hinged bracket arms for fast installation



Wall Bracket Kits

These ready made, flat packed brackets offer a quick and easy method of supporting condensing unit on external walls. Dimensions and load capacities suit all brands of units. All the electro-galvanised steel components receive an 8-phase, epoxy-polyester powder coating, with a scratch resistant, textured finish.

Code	Type	Net Price
A300	B6381 B-Quik AC Bracket 160kgs	£ 28.84
A301	B6382 B-Quik AC Bracket 220kgs	29.83
A305	CBR1-XL TYPE 1 250kgs Bracket (Without Crossbar)	32.47
A306A	CBR2-EL TYPE 2-60kgs Quick Fit Bracket	£ 18.95



Dimensions	A300	A301	A305	A306A
Depth	450mm	550mm	680mm	420mm
Width	800mm	850mm		800mm
Height	350mm	450mm	680mm	375mm
Max. Load	160kgs	220kgs	250kgs	60kgs

Equipped with Level to adjust Wall Bar (patented)

Condensing Unit Drip Trays

Drip trays to fit condensing unit brackets to prevent dripping water when Heat Pumps are on Defrost. Available in Metal or Plastic.



Code	Type	Net Price
A275	B6591 Small Plastic 790 x 420 x 30mm	£ 26.91
A2750	B6592 Large Plastic 940 x 420 x 30mm	40.81
A276	Metal Small Tray 800 x 400mm x 50	£ 55.64
A279	Metal Large Tray 1000 x 400mm x 50	59.98
A277	B6400 Condenser Drain Pan 21.5mm OD (19mm ID)	9.47

Aspen® Xtra Roof Inlets

To cover the hole in the roof made to pass through linesets (e.g. insulated copper tubes), connected to an outdoor unit.

Code	Model	Net Price
A280	B9379 Plastic Swan Neck 125 x 125 mm	£ 73.55



Condensing Unit Guards

Aspen Xtra Rapid Fit Guard

Introducing the new Rapid-fit Condensing Unit Guards. Quick and easy to install, with a simple numbered tab and slot system. The guard is secured using 3 tamper resistant screws. Extra bottom panels are also available for guards fixed at high level on walls. The framework is a steelwork structure which passes through a 5-part phosphating pretreatment prior to a 70 micron powder coat finish in ivory.

Code	Type	Net Price
Rapid Fit Guards		
A260	CG-S Small	£ 114.89
A261	B9164 Medium	203.20
A262	B9165 Large	239.57
A267	CG-750L-INV ASHP GUARD 2 Piece	327.41
Base Panel		
A264	Base Panel for Small Guard	£ 38.71
A265	Base Panel for Medium/Large Guard	43.82
Front/Back Panel		
A268	Front/Back Panel for Small Guard	£ 37.56
A269	Front/Back Panel for Medium Guard	63.85
A270	Front/Back Panel for Large Guard	55.42
A271	Front/Back Panel for Extra Large Guard	124.09

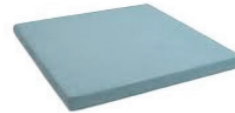
Dimensions:

	Dimensions mm		
Small	600 (H)	900 (W)	350 (D)
Medium	1120	1120	640
Large	1420	1120	640
CG-750L-INV	1150	1450	750



Plastic Patio Slabs

Code	Size	Net Price
A285	900 x 400 x 51mm	£ 17.76
A286	600 x 600 x 51mm	19.47
A287	1220 x 600 x 76mm	42.22



Anti Vibration Pads

Code	Type	Net Price
A972	AV Pad 51 x 51 x 22.2mm	£ 0.59
A973	AV Pad 76 x 76 x 22.2mm	1.72
A974	AV Pad 101 x 101 x 22.2mm	2.58
A975	AV Pad 152 x 152 x 22.2mm	5.63
A976	AV Pad 305 x 305 x 22.2mm	25.06
A976	AV Pad 457 x 457 x 22.2mm	46.35



Big Foot Multi Frame

The Big Foot Systems Light Duty Frame range offers both standard and custom frames for Air Conditioning and small Air Handling Units

Code	Model	Net Price
A9910	B9720 Multi Frame	£ 220.11
A991	B9721 Multi Frame Extender	140.07

Dimensions	B9720	B9721
Height (mm)	335-440	335-440
Width (mm)	1265	1000
Length (mm)	1562	1562



Big Foot Systems

Non-penetrative support frames for air conditioning mini splits, VRFs, small AHUs, supply and extract fans

The Big Foot Systems Light Duty Frame range offers both standard and custom frames for Air Conditioning and small Air Handling Units. Delivered packaged to site the frame components and leg assemblies can easily be handled. our frames are dimensionally configurable at design stage, both in footprint and height.

Code	Type	Net Price
A990	B6075 Big Foot 2	£ 237.50
A991	B6077 Big Foot 4	386.79
A992	B6078 Big Foot 6	530.96

Dimensions	B6075	B6077	B6078
Height (mm)	290-400	290-400	290-400
Width (mm)	1200	1200	1200
Length (mm)	1000	2000	3000
Weight (kg)	40	69	93
Max. loading (kg)	480	720	960

KIT INCLUDES

40mm x 40mm box section end bars
1.2m Cross bars – 40 x 40 section
305mm Leg assemblies with rubber mats
Condenser Clamp kits
Assembly instructions



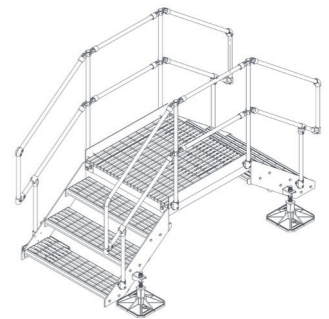
Big Foot Step Over

Big Foot Step Overs available with 2, 3 and 4 steps and a 1m landing section. The four legs on each Step Over are supplied with 305mm feet and rubber mats for stability.

Code	Type	Net Price
A994	B6939 2 Step Unit	£ 1758.00
A995	B6940 3 Step Unit	1998.00
A996	B6941 4 Step Unit	2237.00

KIT INCLUDES

305mm leg assembly & rubber mats x 4 Landing grating x 1
Step handrail x 4 Landing kickplates x 2
Step stringers x 4 Landing handrails x 2
Step grating x 2/3/4 Fixings and assembly instructions



Step Over Platform

For safe passage over small hazards our Big Foot Step Over Platform is available

Code	Type	Net Price
A997	B9200 Step Over Platform 600	£ 220.00
A998	B9201 Step Over Platform 1000	312.00
A999	B6942 Step Over Hamdrail 1 Side	109.00

Dimensions	B9200	B9201	B6942
Foot Size (mm)	200	200	-
Clearance height (mm)	155	155	-
Width (mm)	600	1000	-
Length (mm)	1000	1000	1000





H Frame - Multi Purpose Support

The H Frame Set offers a quick and economical solution to supporting pipework and ducting. Comes complete with 305 mm² or 450 mm² feet.

The kit includes: Two AV Mats, Two Feet, Two Unistrut Inserts, Two L Brackets, Four M10 Bolts and 4 Square Channel Nuts.

Please note: Kit does not include Unistrut.

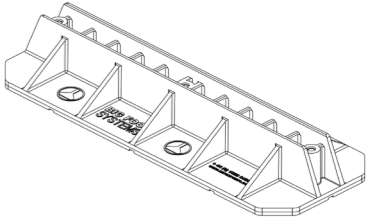
Code	Description	Size	Net Price
A993	B6088 H Frame Set	305 mm ²	£ 29.75
A994	H Frame Set	450 mm ²	73.52



Multi Foot - Multi Purpose Support

The Multi Foot comes in two sizes for supporting small or large pipework systems, cable trays and ductwork. The Multi Foot can accommodate 40mm wide channel horizontally, 40 x 40mm unistrut or vertical 12mm threaded rod which makes it a very versatile support system.

Code	Description	Size	Net Price
A995	B9640 Multi Foot 400	400 x 180 mm	£ 58.28
A996	B9655 Multi Foot 600 c/w Adhered Mat	600 x 200 mm	65.34



Comes in Packs of 4 c/w Adhered Mat

Big Foot Fix-it Foot

The new Fix-It Foot is designed to support light loads, this 1 foot support has 40 x 20 mm aluminium channel recessed into the top face, allowing fixing of the services resting across the feet. Recesses in the underside allow for small debris on the roof surface. Ideal for supporting pipework, ducting, cable trays and even condensing units. Made from durable recycled rubber, they become great supports and act as a natural vibration insulator.



Code	Description	Size	Net Price
A982	B6735 Small Fix-It Foot	250 x 180 x 95 mm	£ 11.89
A983	B6736 Medium Fix-It Foot	400 x 180 x 95 mm	13.61
A984	B6737 Large Fix-It Foot	600 x 220 x 95 mm	15.48
A985	B9096 X Large Fix-it Foot	1000 x 180 x 95 mm	35.31
A650	B9171 Fast Fix Bolt (Pack 2) for Fix-It Foot		3.91

Condensing Unit Block

Available in 450mm and 1000mm lengths. Now available with matching black end caps. Each blocks comes complete with 2 bolts per foot.



Condensing Unit Block

Code	Description	Size	Net Price
A979	B6658 SB-450 Pair		£ 6.25
A980	B6659 SB-1000 Pair		14.23
A981	End Cap to suit above		3.22

Available in 450mm or 1000mm lengths.

Isolators

Four Pole and Neutral - Suitable for outdoors IP66 - Easy Fixing Points

Code	Type	Net Price
L365	BBJ Isolator B9183 Rated at 20 amps.	£ 13.14
L366	BBJ Isolator B9184 Rated at 32 amps.	14.81
L367	BBJ Isolator B9185 Rated at 40 amps.	£16.67
L368	Easy fixing points BBJ Isolator B9186 Rated at 63 amps.	19.17



Fused Spurs - Fan Switches and Pattress Boxes

Code	Type	Net Price
L371	Unswitched Fused Spur Rated at 13 amps.	£ 3.87
L372	Switched Fused Spur c/w Neon Rated at 13 amps.	4.22
L376	Switched Fused Spur without Neon Rated at 13 amps.	3.87
L373	Surface Mounted Metal Back Box 25mm deep.	1.35
L375	White Plastic Surface Mounted Pattress Box 1 Gang 25mm Deep	
L3750	White Plastic Surface Mounted Pattress Box 1 Gang 43mm Deep	
L368	Fan Isolator Switch 10A 3 Pole	2.39



Air Pressure Differential Switch

Code	Type	Net Price
AC930	Air Differential Pressure Switch with Duct Kit 20-300 Pa	19.80
ACEE-D2Kit	PA1-K Differential Pressure Switch Kit only	6.89



Batteries

Code	Type	Net Price
Q193	Duracell Plus Power Batteries 4 x AA	£ 2.55
Q194	Duracell Plus Power Batteries 4 x AAA	3.10
Q195	Duracell Plus Power Batteries 2 x C	3.18
Q196	Duracell Plus Power Batteries 2 x D	3.29
Q197	Duracell Plus Power Batteries 1 x 9V PP3	3.22
Q200	Alkaline Batteries 24 x AAA	7.70



Electrical Accessories

Bulk Head Light

Code	Type	Net Price
L330	BHL-1 Bulk Head Light 18W	£ 9.90



PVC Electrical Tape BSI Approved

Code	Type	Net Price
L328	Black PVC Tape 19 x 33m	£ 0.99
L318	Earth Pattern Insulation Tape 19 x 33m	0.99
L319	White PVC Tape 19 x 33m	0.99
L320	Green PVC Tape 19 x 33m	0.99
L321	Red PVC Tape 19 x 33m	0.99
L322	Yellow PVC Tape 19 x 33m	0.99
L324	Blue PVC Tape 19 x 33m	0.99



Cable Glands

Code	Type	Net Price
L316	Gland Pack 20S to suit 1.5 mm and 2.5 mm	£4.51
L317	Gland Pack 20BW to suit 4.5 mm	4.51



Connector Strips - Flexible Polyethylene - 80°C

Code	Type	Net Price
L332	5 amp Strip Connector	£ 0.49
L333	15 amp	0.59
L334	30 amp	0.69



Plug Tops

Code	Type	Net Price
L337	13 amp White Nylon Plug	£ 1.29
L338	13 amp Black Rubber Plug	2.49



Fuses (Pack 10)

Code	Type	Net Price
L355	13 amp Fuses (Pack of ten)	£ 1.35
L356	2 amp Fuses (Pack of ten)	1.35
L357	3 amp Fuses (Pack of ten)	1.35
L358	5 amp Fuses (Pack of ten)	1.35
L359	10 amp Fuses (Pack of ten)	1.35



Cable Ties & Cable Anchors

Code	Type	Net Price
L340	160 x 4.8 mm Cable Ties (pkt 100)	£ 1.85
L341	200 x 4.8 mm	1.95
L342	300 x 4.8 mm	2.48
L344	370 x 7.8 mm	6.10
L345	Adhesive Tie Anchors (pkt 100) Also suitable for screw mounting	£ 3.27



Junction Boxes

Code	Type	Net Price
L350	Junction Box 5 Amp 4 Terminal	£ 0.81
L351	Junction Box 20 Amp 4 Terminal	1.24
L352	Junction Box 30 Amp 3 Terminal	1.65



Electrical Test Meters

Code	Type	Net Price
Q257	CMMS2138R 1000A AC/DC Clamp Meter 600V	£59.95
Q253	MMMS8268 1000V AC/DC Multi Meter 1000V	24.95
Q254	TIF-150 Inductive clamp-on DMM for AC/DC volts and AC Current up to 600 A 600V	110.26



Heat Shrink

Pack of four colours.

Code	Type	Diameter	Net Price
L410	HSB125B	3.2mm BLK	£ 7.06
L411	HSB250B	6.4mm BLK	7.06
L412	HSB375B	9.5mm BLK	7.06
Assorted Pack			
L415	Heat Shrink Kit 2/2.5/5/7/10/13mm BLK		£ 10.73



Cable Crimps

Butt Connector (Pack 100)

Code	Type	Net Price
L536	PLS15R 0.5-1.5mm Connector Red	£3.77
L537	PLS25B 1.0-2.5mm Connector Blue	4.65
L538	PLS6Y 2.5-6.0mm Connector Yellow	6.10



Female Push on Terminal (Pack 100)

Code	Type	Net Price
L540	PLF15R Female Push on Terminal Red	£ 2.59
L541	PLF25B Female Push on Terminal Blue	2.92
L542	PLF6Y Female Push on Terminal Yellow	3.15



Fork Connectors (Pack 100)

Code	Type	Net Price
L543	PLFK1543R Fork 4.3mm Connector 0.5-1.5mm	£ 3.10
L544	PLFK1543B Fork 4.3mm Connector 1.0-2.5mm	2.99
L545	PLFK643Y Fork 4.3mm Connector 2.5-6.0mm	5.05



Flexible Conduit Kit

10 metres of 20 mm Flexible Conduit c/w 10 x 20mm glands with locknuts.

Code	Type	Net Price
L378	FCP20K/PP Conduit Kit 20mm x 10m + 10Glands	£ 8.37



Cable Glands

Pack of ten Cable Glands complete with locknuts.

Code	Type	Size	Net Price
L420	NG20WKIT	20mm Nylon Gland/Locknut IP68 White	£ 3.44
L422	NG20BKIT	20mm Nylon Gland/Locknut IP68 Black	3.65



Plastic Trunking

Plastic Trunking supplied in 3M Lengths.

Code	Type	Size	Net Price
L386	PT1616SA Mini Self Adhesive	16mm x16 mm	1.66
L388	PT2516 Mini Trunking	25mm x 16mm	1.99
L390	Steeple TRK75W Trunking	75mm x 75mm	21.35
L391	Steeple TRK75W Trunking	100mm x 100mm	22.49



Cable

Code	Type	Net Price
L749	1 metre x 0.75 mm sq. 2 Core	0.24
L750	1 metre x 0.75 mm sq. 3 Core	0.28
L753	1 metre x 0.75 mm sq. 4 Core	0.37
L754	1 metre x 0.75 mm sq. 5 Core	0.83
L754R	1 metre x 0.75 mm sq. 5 Core (Heat Resistant)	0.97
L755	1 metre x 0.75 mm sq. 6 Core	0.92
L700	1 metre x 1.00 mm sq. 2 Core	0.37
L700B	1 metre x 1.00 mm sq. 2 Core (BLK)	0.37
L751	1 metre x 1.50 mm sq. 3 Core	0.54
L752	1 metre x 2.50 mm sq. 3 Core	0.98



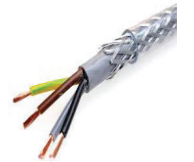
YY Non Screened Multicore Flex (Grey)

Code	Type	Net Price
L699	1 metre x 0.75 mm sq. 2 Core	£ 0.23
L699B	1 metre x 0.75 mm sq. 2 Core (BLK)	0.41
L700	1 metre x 1.00 mm sq. 2 Core	0.47
L700B	1 metre x 1.00 mm sq. 2 Core (BLK)	0.47
L706	1 metre x 2.50 mm sq. 3 Core	1.34
L708	1 metre x 1.50 mm sq. 4 Core	0.59
L708B	1 metre x 1.50 mm sq. 4 Core (BLK)	0.59
L710	1 metre x 2.50 mm sq. 4 Core	1.20



SY (Grey Flex with Outer Braid and Clear PVC Coating)

Code	Type	Net Price
L716	1 metre x 2.50 mm sq. 3 Core	1.41
L719	1 metre x 1.50 mm sq. 4 Core	0.86
L720	1 metre x 2.50 mm sq. 4 Core	1.43
L741	1 metre x 1.50 mm sq. 5 Core	1.67
L722	1 metre x 2.50 mm sq. 5 Core	2.26



CY Screened Multicore Flex (Grey) Screened

Code	Type	Net Price
L726	1 metre x 0.75 mm sq. 4 Core	0.79
L728	1 metre x 1.50 mm sq. 4 Core	1.17



Electrical Tools

Q404	Pro Grip Professional VDE Plier Set 9 piece	£ 38.95
Q405	7pce 1000 Volt Insulated Screwdriver Set Rothenberger	31.93
Includes		
2.5mm x 75mm VDE slotted screwdriver		
4.0mm x 100mm VDE slotted screwdriver		
5.5mm x 125mm VDE slotted screwdriver		
6.5mm x 150mm VDE slotted screwdriver		
PH1 Phillips x 80mm VDE slotted screwdriver		
PH2 Phillips x 80mm VDE slotted screwdriver		
3.0mm x 140mm mains tester		
Q407	Mains Test Screwdriver Rothenberger	2.65



Universal Relays

Code	Type	Net Price
L100	ICG Universal Relay One size for all compressors from 1/12 to 1/2 HP. This solid state device will replace most relays. Easy to install, clip on or screw on. Can be used with or without a start capacitor.	£ 19.70
L101	PO-230 Universal Push on Relay One size for all compressors from 1/12 to 1/2 HP. This solid state device will replace most relays. Easy to install, pushes directly onto compressor terminals. Can be used with or without a start capacitor.	17.50
L103	PR-90 Universal Potential Relay Replaces all potential starting relays for compressors up to 5 HP. Any voltage between 110 and 270 volt a.c.Replaces thousands of O.E.M. models. Universal fixing bracket. Screw on or push on terminals.	15.49
L109	Miniature High Power Double Pole Relay Type HF92F change over 230V AC (Panel Mounted)	9.95



Universal Relay and Overload

Four models available to suit compressors from 1/8 to 1/2 HP.
Can be used with or without a start capacitor.
Pre-wired for fast, simple installation.Complete with mounting clip

Code	Type	Net Price
L105	R082 1/8 HP Relay and Overload	£ 11.64
L106	R062 1/6 - 1/5 HP	11.64
L107	R042 1/4 - 1/3 HP	11.64
L108	R022 1/2 HP	11.64



Start Capacitors

Start Capacitor 275v RMS - 50 Hz. Tolerance: +25%

Code	Rating	Net Price
L115	40 mfd Start Capacitor	£ 5.15
L116	60 mfd	5.25
L117	80 mfd	5.58
L118	100 mfd	11.63
L119	125 mfd	11.79
L120	150 mfd	12.92
L121	180 mfd	18.59



Run Capacitors

Code	Type	Net Price
L123	3 mfd Run Capacitor	£ 1.53
L124	5 mfd	1.77
L125	10 mfd	2.19
L126	15 mfd	2.79
L127	20 mfd	3.53
L128	30 mfd	6.77

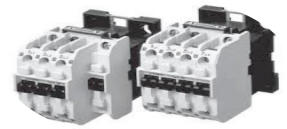


If two capacitors are connected in parallel the total capacitance is the sum of their values.

Danfoss Contactors

Code	Type	Net Price
L260	CI 6-3 POLE DANFOSS CONTACTOR 037H0015-31	£ 26.87
L261	CI 9-3 POLE DANFOSS CONTACTOR 037H0021-31	29.57
L262	CI 12-3 POLE DANFOSS CONTACTOR 037H0031-31	31.48
L264	CI 16-3 POLE DANFOSS CONTACTOR 037H0041-31	35.61
L266	CI 20-3 POLE DANFOSS CONTACTOR 037H0045-31	45.43
L267	CI 25-3 POLE DANFOSS CONTACTOR 037H0051-31	52.59
L268	CI 30-3 POLE DANFOSS CONTACTOR 037H0061-31	64.12

Danfoss



Auxiliary Contacts

Code	Type	Net Price
L272	AUXILLARY CONTACT- NORMALLY OPEN 037H0111	£ 3.05
L273	AUXILLARY CONTACT- NORMALLY CLOSED 037H0112	3.15



Thermal Overloads - Danfoss

Code	Rating	Net Price
L277	TI 16C 2.7 - 4.2 THERMAL OVERLOADS	£ 29.80
L278	TI 16C 4.0 - 6.2 THERMAL OVERLOADS	30.44
L280	T1 16C 8.0 - 12 8.0 - 12 amp	26.64



Universal Contactors

Code	Rating	Net Price
L803	CONTACTOR 9A-AC3 230V COIL NO	£ 12.20
L804	CONTACTOR 12A-AC3 230V COIL NC	12.54
L806	CONTACTOR 12A-AC3 230V COIL NO	13.65
L808	CONTACTOR 16A-AC3 230V COIL NC	16.57
L810	CONTACTOR 16A-AC3 230V COIL NO	16.74
L812	CONTACTOR 22A-AC3 230V COIL NO	19.47
L814	CONTACTOR 32A-AC3 230V COIL NO	28.28



Thermal Overloads

Code	Rating	Net Price
L815	OVERLOAD RELAY ADJ 0.64 - 0.96A (WITH 9 A AC3)	£ 15.96
L816	OVERLOAD RELAY ADJ 2.8 - 4.2A	16.49
L817	OVERLOAD RELAY ADJ 4- 6A BTH-12	16.95
L818	OVERLOAD RELAY ADJ 5- 8A	17.60
L819	OVERLOAD RELAY ADJ 6- 9A	18.70
L820	OVERLOAD RELAY ADJ 9- 13A (16A AC3)	19.35
L821	OVERLOAD RELAY ADJ 14- 22A (16A AC3)	19.75
L822	OVERLOAD RELAY ADJ 18- 26A (32A CONTACTOR)	19.98



Auxiliary Contacts

Code	Type	Net Price
L823	AUXILLARY BLOCK TOP 1 N/C 1 N/O (FITS C-09 - C-25)	£ 4.93
L824	AUXILLARY BLOCK SIDE 1 N/C 1 N/O (FITS C-09 - C-25)	5.70
L825	AUXILLARY TOP 2 N/C 2 N/O (FITS C-09 - C-25)	2.96



MCB Single Pole Type B

Type	Description	Net Price
L860	6 Amp Single Pole Type B MCB	£ 1.93
L861	16 Amp Single Pole Type B MCB	2.95
L862	32 Amp Single Pole Type B MCB	3.45
L863	40 Amp Single Pole Type B MCB	3.65



Glycol

Both MEG & MPG are supplied full strength and will need diluting to suit the application. MPG is about 90% as efficient as MEG but is non toxic. MPG therefore, can be used as a coolant in the systems for dairies, breweries and food processing plants where a leak in the circuit could cause the MPG to come in to contact with the products.

Code	Type	Size	Net Price
M406	Drum MEG (Monoethylene Glycol)	25 kgs	£ 118.40
M407	Drum MPG (Monopropylene Glycol)	25 kgs	109.81
I515	Friogel Neo Heat Pump Transfer Fluid	20 ltr	56.00

FRIOGEL® NEO HEAT PUMP is a Mono Propylene Glycol based heat transfer fluid with corrosion inhibitors specially formulated for use in air source and ground source heat pump systems. It is supplied as a concentrate for dilution.



Sealants & Adhesives

Code	Type	Size	Net Price
M042	Clear Silicone Sealant	300 ml	£ 2.15
M043	White Silicone Sealant	300 ml	2.15
M176	Gun for Silicone Sealant		3.22
M058	Evostik Gripfill	350ml	2.61
M061	Super Glue Tube	3g	5.95
M063	Mortar & Sand Mix	5kg	2.33



Hydro Sprayer

For use with coil cleaners.

Code	Model	Size	Net Price
M428	Advanced	8 0Litre	£ 33.07
M429	Diversitec	3.8 Litre	31.58



Gallo Gun

Clears blocked drains and pump hose with swoosh cartridges, (Please order separately).

Code	Model	Net Price
M412	Gallo Gun (excludes cartridges)	£ 51.35
M413	Box of six Gallo Gun Cartridges	14.49



EndoFlush (Flushing Agent)

EndoFlush internal system cleaner and acid remover. Specially formulated for use after a compressor failure, burn out or retrofit. Breaks down carbon deposits, sludge, tar, oil and grease fast. Non-regulated substance – biodegradable- non-flammable

Code	Model	Size	Net Price
M202	EndoFlush	5 Litre	£ 83.64



Easy Range

The Easy Range consists of products pre-mixed and supplied in 600ml aerosol containers.

**advanced
engineering**

- Easycoat** Coil protection to be used in aggressive environments such as saline or corrosive atmospheres or in areas prone to acid rain.
- Easyfind** Bubbling leak detector spray.
- Easyclean** Coil cleaner that will attack only the dirt and not the equipment.
- EasyFresh** Odour neutraliser for AC systems. Specifically designed for air conditioning units
Eliminates odours Produces long-lasting fresh scent
- Easycare** Cleaner certified to British Standard BS/EN 1040 as a bactericide and to BS/EN 1275 as a fungicide.
- Easyfoam** Heavy duty condenser cleaner formulated to foam out stubborn dirt.
- Easyfinish** For removal of grease and finger-marks from diffusers and casework – leaving a tidy, spotless job.



Code	Type	Size	Net Price
M485	Easycoat	600 ml	£ 8.63
M486	Easyfind	600 ml	8.63
M48601	Easy Fresh	600 ml	8.63
M487	Easyclean	600 ml	8.63
M488	Easyfoam	600 ml	8.63
M489	Easycare	600 ml	8.63
M490	Easyfinish	600 ml	8.63

RTU – “Ready To Use”

The RTU products are ready-mixed and supplied in their own applicators. The range consists of Evaporator cleaner, Condenser cleaner, Coil cleaner/disinfectant and a Bubble-up leak detector. RTU products are supplied in a 1 litre ready to use applicator.

Code	Type	Size	Net Price
M450	RTU Condenser Cleaner	1 Litre	£ 11.42
M452	RTU Coil Cleaner/Disinfectant	1 Litre	11.42
M454	RTU Evaporator Cleaner	1 Litre	11.42
M480	RTU Bubble-up Leak Detector	1 Litre	11.42



Envirocoil

Envirocoil is an environmentally friendly Coil cleaner that attacks only dirt deposits, not equipment. Contains only bio-degradable surfactants (no acids, phosphates or solvents) yet still cleans with maximum effectiveness.

Code	Type	Size	Net Price
M460	Envirocoil	5 Litre	£ 25.98



ProTect Corrosion protection

Code	Description	Net Price
M471	ProTect Corrosion protection 1L	£ 53.60
M472	ProTect Corrosion protection 5L	133.74



Hydrokleen

Non-acid condenser cleaner. The perfect solution to dirty or greasy air conditioning or refrigeration systems. This totally acid free cleaner produces a heavy duty foam which cuts through all contaminants and leaves the equipment looking as good as new

Code	Type	Size	Net Price
M466	Hydrokleen	5 litre	£ 28.17



Condencide

Condencide will clean and disinfect metal surfaces. It is ideal for use in food preparation areas and is certified to British Standard BS/EN 1276 as a bactericide and to BS/EN 1650 as a fungicide.

Code	Type	Size	Net Price
M468	Condencide	5 litre	£ 29.95



HB30 – Ice Machine Cleaner

Safe for all types of Ice Machine, including those with aluminium or nickel parts. It removes lime and other scale with maximum effectiveness and can also be used for other kitchen equipment. Ideal for removing scale build up from kettles, water dispensers and tea and coffee makers.

Code	Type	Size	Net Price
M470	HB-30	5 litre	£ 25.61



Hydrocoil

A concentrated cleaner that is simple and effective in cleaning evaporator coils. Able to treat extremely dirty coils and also de-odorises, eliminates slime in condensate trays and limits future dirt accumulation.

Code	Type	Size	Net Price
M462	Hydrocoil	5 litre	£27.89



Superclean

Developed specifically for air-cooled condensers. This heavy duty foaming cleaner foams out stubborn deposits – even those which have been baked on.

Code	Type	Size	Net Price
M464	Superclean	5 litre	£ 30.80



Drainkleen

Condensate drain cleaner. A powerful and effective liquid drain cleaner formulated specifically to clear organic blockages in condensate drains. Also removes lime-scale and rust deposits from drains and traps.

Code	Type	Size	Net Price
M474	Drainkleen	5 litre	£ 38.54
M475	Drainkleen One Shot	250 ml	4.52



Grease Gobbler

Formulated specifically to provide a quick and easy to use heavy duty solvent cleaner capable of cleaning away grease and dirt. The high velocity blasting action and the powerful solvents loosen and remove stubborn grease and dirt.

Code	Type	Net Price
M135	Grease Gobbler 400 ml aerosol	£ 8.63



Smelly Jelly

Smelly Jelly has been formulated to provide a pleasant fragrance in fan coil and cassette units. Easy to apply, Smelly Jelly is simply placed within the unit ideally as close to the discharge grille as possible. Once in position and the unit is switched on the fragrance will immediately become noticeable. Available in five fragrances.

Code	Type	Net Price
M492	Yellow Citrus Fragrance	£ 6.20
M493	Red Floral	6.20
M494	Green Herbal	6.20
M495	Ivory Morning	6.20
M496	Blue Mountain	6.20



QwikTreat

QwikTreat is an inexpensive, easy to use, long lasting condensate pan treatment. QwikTreat is a patent pending time released tablet that will treat and prevent scum, scale and deposits that can cause odours and clog drains.

Code	Type	Net Price
M472	QuickTreat Capsules (Pack of Sixteen)	£ 64.12



Cool Safe

CoolSafe® is an effective coil cleaner for refrigeration systems. Its unique formula will remove all common contaminants left by organic materials and foodstuffs on cooling coils... with minimum hazard to the user and immediate environment.

Code	Type	Net Price
M455	Cool Safe 1 litre Ready to Use	£ 11.78
M456	Cool Safe 5 litre	33.01



StayClean Tablets

StayClean Tablets are an inexpensive, easy to use, long lasting condensate pan treatment. They will control odours and prevent builds ups in the condensate tray and drain. Multiple tablets can be used for larger systems for maximum flexibility.

Code	Type	Net Price
M476	StayClean Mini Tablets (Pack of Twenty)	£ 4.52



StayClean Strips

StayClean Strips are placed in the condensate tray. Here they will slowly dissolve in the condensate over a period of six months. As they do they will release a disinfectant that will effectively keep the tray clear of bacteria and moulds. Suitable for systems between 3 and 5kW.

Other sizes available to order - up to 70kW systems – please ask our sales office for details .

Code	Type	Net Price
M477	StayClean Strips #2	£ 9.61



Maintenance Stationery

Engineers Pads

Available in five varieties, AC-Pro report pads cover the wide spectrum of jobs which must now be recorded by law. Whether it's a service, breakdown, installation or commission, a purpose-built form is at hand to keep client equipment log books up-to-date – including the right details to exceed current regulations.



Code	Description	Net Price
M081	AC Pro Service Report Pad (50 Sheets)	£ 9.74
M082	AC Pro Refrigerant Tracking Report Pad (50 Sheets)	9.74
M083	AC Pro Part Request Report Pad (50 Sheets)	9.74
M084	AC Pro Commissioning Report Pad (50 Sheets)	9.74
M085	AC pro Refrigeration Service Pad (50 Sheets)	9.74
M086	AC Pro Pipe Strength & Tightness Pad (50 Sheets)	9.74
M087	AC Pro Mixed Engineers Reports (50 Sheets)	9.74
M088	AC Pro Breakdown Reports (50 Sheets)	9.74
M089	AC Pro Installation Reports (50 Sheets)	9.74
M090	AC Pro F-Gas System Labels	12.66



AC Pro Pads are an efficient record management system, with the reporting sheets providing engineers with a concise, efficient way to keep accurate records and give peace of mind to customers; particularly those worried about their legal F-Gas duties.

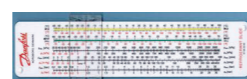
Hazard Labels

M092	Compressed Gas 100mm x 100mm	£ 2.89
M093	Flammable Gas 100mm x 100mm	2.89
M094	Compressed Gas 200mm x 200mm	3.99
M095	Flammable Gas 200mm x 200mm	3.99



Comparator

Code	Description	Net Price
M099	Comparator (Slide Rule)	£ 3.89



Safety Protection

Code	Description	Net Price
Q902	Rothenberger Protective Goggles Grade 1	£ 3.25
Q919	Rothenberger Comfort Masks Pack 10	8.33
Q120	Latex Gloves Lightly Powdered (Natural Rubber Latex minimises the risk of 1V Allergies)	7.34
Q920	Foam Knee Pads with Adjustable Straps	7.39
Q921	Pack 2 Elasticated Colour Coded Bungee Cords 48"	3.09
Q922	Pack 2 Elasticated Colour Coded Bungee Cords 60"	3.30



Test Kits & Maintenance

Retrofit Kit

Code	Type	Net Price
M156	Qwik Check 2 Second Test Kit	£9.15

Acid Test Kit

M154	TKO for Mineral Oil	£ 7.39
M155	Suitable for all oils Oil	9.49

Acid Away

M162	Acid Away for Mineral Oil	£ 26.23
M163	Acid Away for Ester Oil	28.24



Pro-Flush HVAC Flushing Kit

Code	Description	Net Price
M414	Pro-Flush HVAC Flushing Kit	£ 98.98
M415	Pro-Flush HVAC Flushing Solvent Refill	64.65



Penetrating Oil

Lubricant, moisture repellent, protects metal against rust and cleans away grease.

Code	Type	Net Price
M171	CO-1 Pull a Spout Oiler 120ml	£ 3.28
M180	WD-40 325ml Aerosol	4.49



Grease

Code	Type	Net Price
M181	LM2 Grease 400g	£ 4.39
M182	Grease Gun	23.49
M1820	Grease Gun Flexi Tube	8.97
M183	Molykote Gas Cock Grease 50g	5.72
Q124	Silicon Grease (WRC Approved) 50g	5.89



Cleaning Wipes

Code	Type	Net Price
M059	Blue Paper Towel Roll 3ply - 100 Sheets	3.89
Q126	Heavy Duty Textured Hand Wipes (x70)	9.35
M498	EasyWipes (1 Pack of 50 Wipes)	3.89



Gloves

Code	Type	Net Price
Q125	Heavy Duty Leather Rigger Gloves Pair	£ 1.69
Q134	Vinyl Gloves Medium Pack 100	4.99
Q120	Vinyl Gloves Large Pack 100	4.99
Q903	PVC Gloves (Ideal when handling refrigerant)	2.15



Heat Sink Compound

Code	Type	Net Price
M183	Heat Sink Compound 25g Tube	£ 7.85



Epoxy Putty

Code	Type	Net Price
M163	Epoxy Putty	5.49



Xtra Rigid Pipe & Pipe Fittings

Complies with MS628, BS3505, SIRIM & SPAN listed
Specifically designed and manufactured for the industry Greater wall thickness

- Smooth internal bore
- Greater rigidity requiring less supports
- Resistant to freezing & cracking
- Superior quality product for a more professional installation
- Available in Black or White

Xtra
the installer's choice



Code	White	Black	Style	Net Price
N465	B7501	B7617	3/4" – 15mm ID 21.5mm OD Tube x 3m	£ 2.65
N466	B7541	B7629	3/4" – 15mm ID 21.5mm OD Connector	0.91
N467	B7511	B7620	3/4" – 15mm ID 21.5mm OD 90° Bend	0.73
N468	B7521	B7623	3/4" – 15mm ID 21.5mm OD 45° Bend	0.72
N469	B7531	B7626	3/4" – 15mm ID 21.5mm OD Equal Tee	0.73
N470	B7571	B7638	3/4" – 15mm ID 21.5mm OD Male Threaded Socket	1.07
N471	B7561	B7635	3/4" – 15mm ID 21.5mm OD Female Threaded Socket	1.09
N688	B7582	B7642	3/4" – 1 1/4" Reducing Socket	1.19
N472	B7616	B7652	3/4" Overflow Pipe Clip	0.35
N473	B7613	B7649	3/4" UPVC Pipe Stud Clip	0.49
N477			Adhesive for PVC/MUPVC Tube manufactured to BS 6209 250 ml	4.65



32mm Waste Pipe

White Plastic Drain Tube and Fittings.

Code	Style	Net Price
N650	32mm White Waste Pipe x 3M Length	£ 5.94
N654	32mm White Straight Couplers	0.71
N658	32mm White 90° Bend	0.71
N662	32mm White 92.5° Bend	0.69
N665	32mm White 135° Bend	0.76
N668	32mm White Equal Tee	0.88
N683	32mm White Access Plug	0.96
N675	32mm White Pipe Clip	0.33
N428	32mm White Hepvo Self Seal Waste Valve	21.26
N688	32mm x 21.5mm Solvent Reducer	0.78
F085	15mm Talon Locking Clip Single PK100	£ 9.82
F086	22mm Talon Locking Clip Single PK 100	13.48
F083	15mm Talon Nail Clips PK 100	5.53
F084	22mm Talon Nail Clips PK100	5.76
N477	Floplast White Solvent Cement 250 ml	£ 4.65



Plastic Tube Cutters

Pipe cutters for cutting White Plastic Drain Pipe. (not suitable for Grey PVC drain pipe).

Code	Style	Net Price
Q131	Rothenberger 42TC Ratchet Tube Cutter	£ 34.89
N415	Rothenberger 59010 10mm PLASTICUT	£ 7.18
N416	Rothenberger 59015 15mm PLASTICUT	7.49
N417	Rothenberger 59022 22mm PLASTICUT	8.21
N418	Rothenberger 59028 28mm PLASTICUT	10.25



For quick, clean and right angled cuts on plastic pipes

ROTHENBERGER

Condensate Hose

30 Metre Coils

Code	Size	Style	Net Price
N482	1/4" i.d. x 1/2" o.d.	Reinforced Clear	5.89
N484	3/8" i.d. x 5/8" o.d.	Reinforced Clear	8.98
N485	1/2" i.d. x 1/2" o.d.	Reinforced Clear	10.25
N485	1/4" i.d. x 6mm o.d.	Reinforced Black	£ 6.80

Xtra
the installer's choice



Condensate Accessories

Code	Part Number	Description	Net Price
N617	FP2628 Pack 3	1/4" Non Return Valve	£ 8.27
N735	FP2630 Pack 3	3/8" Non Return Valve	10.97
N7409	FP2024 Pack 5	6mm Tee Connector	6.20
N7408	FP2028 Pack 5	6mm Elbow Connector	6.03
N709	FP2622 Pack 5	6mm Straight Connector	5.79
N731	FP2030 Pack 5	10mm Tee Connector	7.75
N7411	FP2032 Pack 5	10mm Elbow Connector	8.10
N7412	FP2624 Pack 5	10mm Straight Connector	8.56
N730	FP2038 Pack 3	Hose to Soil Pipe Self Sealing	12.92
N7501	FP2040 Pack 3	Hose to Overflow	4.10



Hose Clips

Bright Zinc plated Mild Steel.

Code	Model	To Suit	Net Price
N490	HC12	9.5 - 12 mm Diameter	£ 0.34
N491	HC16	11 - 16 mm	0.34
N492	HC20	13 - 20 mm	0.35
N493	HC22	14 - 22 mm	0.38
N494	HC25	17 - 25 mm	0.38
N495	HC30	22 - 30 mm	0.39
N496	HC-3S	25 - 35 mm	0.42
N497	HC-4S	35 - 45 mm	0.44

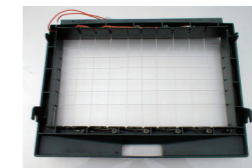


Whirlpool Ice Machine Spares

K20 K40 Models

Code	Description	Net Price
T250	Water Pump	£ 36.19
T252	Cutting Grid	46.08
T254	Bin Thermostat	13.86
T256	Thickness Thermostat	17.89
T257	Evaporator K40	224.25
T258	Condensor K40	99.95
T260	Hot Gas Coil	32.65
T265	Inlet Valve for K20	12.96
T266	Inlet Valve for K40	12.96

Whirlpool



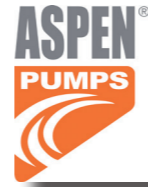
Aspen Mini-Aqua Pump

The world's slimmest condensate removal pump is designed to fit where other's can't!

Code	Model	Net Price
N611	FP2406/2 Aspen Mini-Aqua Pump	£ 54.25
N631	FP3326 Aspen Silent+ Mini Aqua Pump	60.79

Dimensions Pump unit	28mm x 165mm x 28mm
Dimensions reservoir	40mm x 80mm x 41mm
Pump Head	Maximum head 8 metres
Flow Rate	14 litres/hr at zero head
Discharge	6mm

silent+
MINI AQUA.



Aspen Micro v i4 Mini & Maxi Orange Pump

The world's best selling mini pump offers unrivalled reliability and performance.

Code	Model	Net Price
N619	FP2212 Aspen Mini-Orange Pump	£ 54.25
N630	FP3313 Silent+ Mini-Orange Pump	60.79
N627	FP2210 Aspen Maxi-Orange Pump	63.29
N635	FP1200 Micro v i4 ***New From Aspen***	68.55

Dimensions Pump unit	52mm x 122mm x 38mm
Dimensions reservoir	40mm x 75mm x 40mm
Pump Head	Maximum head 8 metres
Flow Rate	14 litres/hr at zero head
Discharge	6mm

silent+
MINI ORANGE.



Aspen Mini Blanc Deluxe Pump

The 'ultra quick fit' Mini Blanc is designed to be fitted beneath high wall indoor units and offers easy access for future maintenance.

Code	Model	Net Price
N626	FP1080/2 Aspen Mini Blanc Deluxe Pump	£ 54.25

Water flow rate: 6L/hr @ zero head
Maximum recommended head: 4m
18dB(A) @ 1m



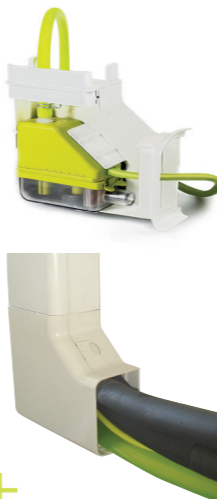
Aspen Mini-Lime Pump

The Mini-Lime pump comes complete with 800 mm of plastic trunking.
The pump is mounted within the elbow supplied.
Completely reversible, can be mounted either side of the unit.
There is space in the trunking for cables and insulated refrigerant tubes up to 3/8 and 5/8.

Code	Model	Net Price
N620	FP3312 Aspen Silent + Mini-Lime	£ 89.21
N621	FP3316 Aspen Silent + Mini-Lime use with 70mm BBJ Duct	89.21
N622	FP3322 Aspen Silent + Mini Lime Replacement Pack	59.95
N623	FP2215 Aspen Maxi Lime Replacement Pack-Pump Only	65.41
N624	FP2213 Aspen Maxi Lime use with 70mm BBJ Duct	96.89

Dimensions	800mm Trunking with elbow
Pump Head	Max head 8m (Mini) 15m (Maxi)
Flow Rate	14 litres/hr at zero head
Discharge	: To suit 6mm i.d. Plastic

silent+
MINI LIME.



Aspen Standard Peristaltic Pump

Operated by an air conditioning cooling signal, the Standard peristaltic sets the standard for reliability. The remote install options means minimum future maintenance disruption.

Code	Model	Net Price
N600	FP2081/2 Aspen Standard MK2 Peristaltic Pump	£ 82.17
N601	2716 Wall Mounting Bracket	7.95

Dimensions	: (H) 142 (W) 83 (D) 175mm
Pump Head	: 12 metres & 2.0 metre Suction
Flow Rate	: 6.25 litres/hr at 12 metres
Discharge	: To suit 1/4" i.d. Plastic
Power Supply	: 230 volts, 1PH 50Hz
Temp Limit	: On tube -30/+100 Deg.C



Aspen Universal Peristaltic Pump

The top selling Universal is operated by two air temperature sensors. The peristaltic rotary movement creates a continuous pressure meaning the pump can be sited 8m away from the source with no effect in performance

Code	Model	Net Price
N602	FP2082/2 Aspen Universal Peristaltic Pump	£ 99.95
N601	2716 Wall Mounting Bracket	7.95

Dimensions	: (H) 142 (W) 83 (D) 175mm
Pump Head	: 12 metres & 2.0 metre Suction
Flow Rate	: 6.25 litres/hr at 12 metres
Discharge	: To suit 1/4" i.d. Plastic
Power Supply	: 230 volts, 1PH 50Hz
Temp Limit	: On tube -30/+100 Deg.C



Aspen MK4 Peristaltic Pump with Sensor

The MK4 peristaltic is operated using two water sensors. The lower sensor comes into contact with water, the heat conductivity from that sensor provides a temperature difference between the second – energising the pump.

Code	Model	Net Price
N604	FP2080 Aspen Mk4 Peristaltic Pump with water sensor	£ 117.94
N601	BKT-01 Wall mounting bracket	7.95

Dimensions	: (H) 142 (W) 83 (D) 175mm
Pump Head	: 12 metres & 2.0 metre Suction
Flow Rate	: 6.25 litres/hr at 12 metres
Discharge	: To suit 1/4" i.d. Plastic
Power Supply	: 230 volts, 1PH 50Hz
Temp Limit	: On tube -30/+100 Deg.C



Aspen Hi-Lift Tank Pumps

The world's only persitaltic tank pump offers unsurpassed high head and unmatched reliability

Code	Model	Net Price
N606	FP2099/2 Aspen Pump with 1 litre Tank	£ 93.80
N607	FP2071/2 Aspen Pump with 2 litre Tank	98.95

Dimensions 1 litre	: (H) 135 (W) 235(D) 145mm
Dimensions 2 litre	: (H) 150 (W) 235(D) 145mm
Pump Head	: 12 metres
Flow Rate	: 11 litres/hr at 12 metres
Discharge	: To suit 1/4" i.d. Plastic
Power Supply	: 230 volts, 1PH 50Hz
Temp Limit	: On tube -30/+100 Deg.C

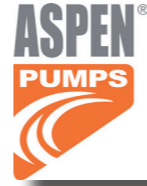


Aspen Hi-Flow Tank Pumps

Proven reliability and performance. The evolution of this world class tank pump means it's more engineer focused and even easier to install and maintain... when time is precious look no further.

Code	Model	Net Price
N608	FP2096/2 Aspen Hi-Flow with 1 litre tank - Black	£ 42.55
N6080	FP2551 Aspen Hi-Flow with 1 litre tank - White	42.55
N610	FP2122/2 Aspen Hi-Flow with 2 litre tank - Black	42.55
N6100	FP2552 Aspen Hi-Flow with 2 litre tank - White	42.55
N6102	FP1056/2 Aspen Mini Tank Pump	51.65

Max. flow 288L/h @ 0 head
Max. rec. head 5m
Tank capacity 1L & 2L
Sound level@1m 55dB(A)



Heavy Duty Tank Pump

Heavy Duty pumps are perfect for the removal of large quantities of condensate water

Code	Model	Net Price
N628	Aspen FP2074/2 Heavy Duty Tank Pump 6m	£ 87.96
N625	Aspen FP2066/2 Heavy Duty Tank Pump 10m	153.24



Hot Water Economy Tank Pump

N629	Hot Water Economy 4 Litre	£ 251.53
N630	Hot Water Heavy Duty 5 Litre	439.48

Our Hot Water Economy & Hot Water Heavy Duty pumps are designed to handle 80°C water. With outstanding water flow rates



Supermarket Pumps

Code	Model	Net Price
N681	FP2597 Low Profile Top Entry ERRP Dairy Pump	£ 218.32
N684	FP2805 Low Profile Side Entry ERRP Dairy Pump	218.32
N682	FP2318 Top Entry ERRP Dairy Pump	243.92
N6820	FP2320 Side Entry ERRP Dairy Pump	243.92
N683	FP2119 Top Inlet Cold Cabinet Stainless Steel	415.96
N685	FP2120 Side Inlet Cold Cabinet Stainless Steel	415.96



A superior stainless steel refrigeration pump built to last. Designed to fit beneath refrigeration units, it pumps away defrost water and filters debris

Boiler Pumps

N652	FP2950 Aspen Alarm Boiler Pump	£ 48.42
N653	FP2952 Aspen Hi-Capacity Boiler Pump	48.42
N654	FP2944 Compact Kitchen Pump	53.10
N655	FP2948 Kitchen Model Pump	53.10



The **Kitchen all-in-one boiler Pump** is designed to be fitted beneath the boiler.
The **Compact Boiler Pumps** are Ideal for domestic gas boilers.

Spare Tube for Peristaltic Pumps

Inspect pump head regularly and change the tube every twelve months.

Code	Model	Net Price
N612	FP1282 Spare Head Tube for Aspen Pumps	£ 8.66



Controllers

Eliwell Controllers

ID Cool Chill and Freeze Range - Pre-Programmed - Suitable for service replacement and Original equipment

Code	Type	Description	Voltage/Temp	Net Price
L596	ID Cool	Refrigerator Off Cycle Defrost	+3 to +15C 230V AC	£ 20.85
A597	ID Chill	Chillers-Electrical Defrost	-15 to +5C 230V AC	29.83
A598	ID Freeze	Freezers-Electrical Defrost	-40 to -10C 230V AC	32.61



ID Plus Series

Code	Model	Defrost Type	Voltage/Temp	Net Price
L602	ID Plus 961	Off Cycle Visual Alarm	-55/150C 12A 12V	£ 50.82
I6020	ID 961	Off Cycle Visual Alarm	-55/150C 12A 12V	28.95
L610	ID Plus 971	Tme/Temp Buzzer Alarm	-55/150C 12A 12V	63.27
L614	ID Plus 974	Time/Temp Fan Delay Buzzer	-55/150C 12A 12V	67.55
L6140	ID 974	Time/Temp Fan Delay Buzzer	-55/150C 12A 12V	29.19
L603	ID Plus 961	Off Cycle Visual Alarm	-55/150C 12A 230V	43.25
L611	ID Plus 971	Tme/Temp Buzzer Alarm	-55/150C 12A 230V	61.35
L615	ID Plus 974	Time/Temp Fan Delay Buzzer	-55/150C 12A 230V	52.91



ID Plus Range

ID Range



Digital LCD Thermometer - Battery Powered

Code	Model	Description	Voltage /Temp	Net Price
Q870	EWTL300	Probe/Battery Included PTC 1.5V	-20/70C	£ 13.95



Transformer

Code	Part Number	Description	Voltage	Net Price
L640	TF11111	For use with 1 X Controller	230V/12V	£ 3.57



Temperature Sensors(Probes)

Code	Part Number	Description	Temp	Net Price
L624	SN8SAA1500	NTC Probe 1.5m Stainless	-40/+110C	£ 5.18
L626	SN100000	NTC Probe 3.0m Stainless	-50/+110C	8.19
L620	SN7SOA1500	PTC Probe 1.5m Stainless	-50/+110C	5.79
L622	SN7POA3000	PTC Probe 3.0m Stainless	-30/+80C	8.19
L920	PSTPN615F200	NTC Probe 1.5M Plastic	-40/+110C	2.95



Wall Mounting Box

Code	Part Number	Description	Size	Net Price
L644	EW BOX	Wall Box for 1 Controller	32mm x 74mm x 1	£ 10.20
L6440	EW BOX	Wall Box for 2 Controllers	32mm x 74mm x 2	10.95



Eliwell Control Panel

Complete management of static or ventilated cold rooms
The Coldface EWRC 300/500LX series manages the temperature control of a static or ventilated cold room

Code	Part Number	Description	Size	Net Price
L254	EWRC 500 NT	Eliwell Coldface		£ 112.15



Controllers

Carel Controllers

Code	Part Number	Description	Temp Range	Net Price
L210	PZDOSNPOE1	Easy Cool incl Probes	-50/+90C	£ 23.16
A211	PZDOCOP001	Easy Freeze incl Probes	-50/+90C	30.84

CAREL



Dixell Controllers

Code	Type	Description	Temp Range	Net Price
L155	Universal-J	T/Stat Off Cycle Defrost	NTC/PTC 12V AC/DC 1 x NTC Probes included	£ 32.22
L156	Universal-R	Dual Voltage Off Cycle Defrost Fan Control 4th Relay for 2nd Evaporator Defrost Alarm/Light	NTC/PTC 12VAC/DC 230V AC 2 x NTC Probes included	59.78

dixell



LAE Controllers

Code	Type	Description	Control Range	Net Price
L214	AT2-5BS4E-AG	Digital Controller	-50÷120°C 230V 2 x NTC Probes included	£ 46.95

lae ELECTRONIC



Parker Sporlan Controllers

Code	Part Number	Description	Control Range	Net Price
L900	PSK201N7	Single Digital Output 230V NTC/PTC inputs (Chiller)	16A	£ 27.50
L901	PSK223N7	Three Digital Outputs 230V 2 x NTC/PTC inputs (Freezer)	8A	35.28
L902	PSK213N3	Digital Controller 12-24V	16A	38.89
L920	PELX322	NTC Temp Probe	IP67	3.88

SPORLAN



Sporlan's PSK Series electronic controllers manage low and medium temperature refrigeration units by controlling compressors, defrost, lights and fans. There are several models to choose from starting with the PSK201 with simple logic and wiring (for base compressor and defrost control) to the PSK214 with multiple I/Os and evaporator fan management (for complex compressor, defrost and fan control).

Data Loggers

Code	Part Number	Description	Net Price
Q880	SL300T	Data Logger C/W Software REP SL20	£ 72.95



Thermometers

Code	Description	Net Price
Q868	LCD Thermometer	£ 8.95
Q869	RT-221 Cabinet Thermometer	6.95
Q874	SP-120 Solar Powered Thermometer	22.29



Grasslin Time Switches

GRASSLIN
YOUR SENSES. OUR SOLUTIONS.

Code	Type	Net Price
L020	IHTGPT01 STUZH 24 hour Dial Change over contacts. Switchable every 15 minutes	£ 19.70
L021	FM1/STUHZ MODULE 24 HOUR TIMER Multiple programme slots Switchable every 15 Minutes.	17.50
L022	TACTIC 111.1 Surface Flush and Din Rail Mounted Universal Time Switch. 24 Hour Dial 16A/250V Switchable every 15 Minutes	15.49



Defrost Timers

Code	Description	Net Price
L038	Supco Adjustable Timer EDT20	£ 24.82
L039	Supco TD-69 Time Delay	10.14
L015	SB3-82 Bigatti Timer	44.90



Heater Tapes

Drain line Heater Tapes are suitable for internal applications and should be energised only when the system is on defrost. If you require permanent operation Power output: 40 watts per metre. Dimensions: 7mm x 5 mm oval cross section. Supplied with 1000 mm cold leads.

Code	Description	Net Price
L130	1.0 M Heater Tape	£ 8.32
L131	1.5 M Heater Tape	11.39
L132	2.0 M Heater Tape	12.89
L133	3.0 M Heater Tape	14.06
L134	4.0 M Heater Tape	15.98
L135	5.0 M Heater Tape	18.64
L136	6.0 M Heater Tape	21.27



Condensate Evaporator Tray

pump house

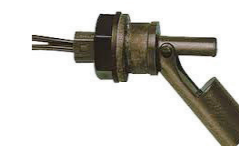
Code	Description	Net Price
N510	ET-150 Condensate Evaluator Tray 300W	£ 68.02



Part Code	Description	Evaporator Flow	Tank Capacity	Height	Length	Width	Weight	Volts Hertz
ET-150 NEW	Evaporator Tray	150 ml per hr	1.5 litre	90 mm	320 mm	120 mm	1.1 kg	230V / 50Hz

Liquid Level Sensor

Code	Description	Net Price
N512	Liquid Level Float Switch	£ 12.79



Fan Speed Controllers

The Fan Speed Controller is designed to control the head pressure during ambient temperatures of 21°C and lower, whilst in cooling mode.

The aim is to achieve a condenser head pressure of between 230 psig/245 psig (these figures apply to R22 refrigerant).

The heat pump model has a switch to facilitate either energised or de-energised 4 way valves in heating, between 24V and 240V signals.

Specification:

There are two models available:

One for Cooling Only

One for Heating and Cooling

Condenser temperature coil sensor

Max output: 3 Amp

Push on connectors

Minimum speed adjustment: 230V 50/60 Hz

Power Consumption Internal: 8 W

Heat Pump Model: Reversing valve input 24 to 240V A.C.

opto isolated Setpoint: 30 to 60 °C



Code	Type	Description	Net Price
E526	ASPEN-C	Fan Speed Controller - Cooling	£ 40.46
E527	ASPEN-H/C	Fan Speed Controller - Heat Pump	46.78

Alco Fan Speed Control - Universal

Code	Type	Model	Net Price
E525	FSX-42-S	Fan Speed Control 18.8 bar	£ 73.85

Adjustable cut-off pressure

High voltage Triac (800Volts)

Integrated protection against voltage peaks

IP65 protection, no additional gaskets required (Moulded into plug)

Easy mounting and adjustment



3 Phase Failure + Phase Protection Detector

Code	Description	Net Price
E530	3 Phase Failure + Phase Protection Detector	£ 37.60

Designed to protect 3 phase motors and industrial equipment from over-heating due to a phase failure.



Hi-Level Water Sensor

Code	Description	Net Price
E531	Hi-Level Water Sensor	£ 62.42

The versatile Hi-Level Water Sensor is available with two different sensor options. The Hi-Level Water Sensor can be used in conjunction with most pumps that do not include high level safety. It also has 2 levels of sensing - high and low, both with N.O, N.C & C.



Dry All Liquid Line Filter Drier DCH Series

Flare Type 1/4"

Code	Model	Net Price
C460	DCH032F 1/4 SAE Dry All Filter Drier	£ 3.96
C461	DCH052F 1/4 SAE Dry All Filter Drier	5.89
C462	DCH082F 1/4 SAE Dry All Filter Drier	6.81
C463	DCH162F 1/4 SAE Dry All Filter Drier	13.41



Flare Type 3/8"

Code	Model	Net Price
C465	DCH053F 3/8 SAE Dry All Filter Drier	£ 5.89
C466	DCH083F 3/8 SAE Dry All Filter Drier	6.81
C467	DCH163F 3/8 SAE Dry All Filter Drier	7.93
C468	DCH303F 3/8 SAE Dry All Filter Drier	13.11

Flare Type 1/2"

Code	Model	Net Price
C471	DCH084F 1/2 SAE Dry All Filter Drier	£ 7.01
C472	DCH164F 1/2 SAE Dry All Filter Drier	7.93
C473	DCH304F 1/2 SAE Dry All Filter Drier	13.11

Flare Type 5/8"

Code	Model	Net Price
C476	DCH165F 5/8 SAE Dry All Filter Drier	£ 8.54
C477	DCH305F 5/8 SAE Dry All Filter Drier	13.11
C478	DCH415F 5/8 SAE Dry All Filter Drier	22.05

Moisture and solid contaminants are persistent problems in ACR maintenance. If a system has not been properly evacuated, if it leaks, or if the water-absorbing polyolester (POE) oils have been inadvertently exposed to the air, water molecules will have accumulated in your pipes. Similarly, if a system has not been properly installed or serviced, brazing flux, dust, swarf, or insulation powder could all be trapped inside and circulated with the refrigerant.

All these elements can, in the short term, restrict the flow of refrigerants and make systems less efficient. In the longer term, however, their presence is a much more serious problem – causing acid build up, component corrosion, freeze-ups, and system shut-downs.

It is therefore highly beneficial to have an effective filter-dryer installed in all ACR systems. The unit, consisting of a filter and moisture-absorbing core catches passing detritus moisture, and acid, rendering them harmless.



Dry All Liquid Line Filter Drier DCH Series

Solder Type 1/4"

Code	Model	Net Price
C480	DCH032S 1/4" ODS Dry All Filter Drier	£4.17
C481	DCH052S 1/4" ODS Dry All Filter Drier	5.89



Solder Type 3/8"

Code	Model	Net Price
C482	DCH053S 3/8" ODS Dry All Filter Drier	£ 5.89
C483	DCH083S 3/8" ODS Dry All Filter Drier	6.81
C484	DCH163S 3/8" ODS Dry All Filter Drier	7.93
C485	DCH303S 3/8" ODS Dry All Filter Drier	13.11

Solder Type 1/2"

Code	Model	Net Price
C486	DCH084S 1/2" ODS Dry All Filter Drier	£7.01
C487	DCH164S 1/2" ODS Dry All Filter Drier	7.93
C488	DCH304S 1/2" ODS Dry All Filter Drier	13.11

Solder Type 5/8"

Code	Model	Net Price
C489	DCH165F 5/8 ODS Dry All Filter Drier	£8.54
C490	DCH305F 5/8 Dry All Filter Drier	13.11

Solder Type 7/8"

Code	Model	Net Price
C491	DCH417S 7/8 ODS Dry All Filter Drier	£22.05

Solder Type 1-1/8"

Code	Net Price
C479	£24.91



The unique desiccant blend and manufacturing process of the solid cores which are used in the DCH series of filter driers gives the range the following unique features:-
 The DCH series of filter dryers are uniformly effective across the entire solid core at capturing moisture and acid. The solid core found with the DCH series also provides excellent deep filtration, capturing and retaining particles as small as 10 microns, without causing unacceptable high pressure drops.
 No contaminants, moisture or acid are able to bypass the solid core, as it is sealed to the drier shell wall. The high degree of moisture capacity of the DCH series, means that the core removes large amounts of water in a single pass, thereby protecting the expansion valve from freezing up and minimising the risk of acid formation in the system.

APPROVED FOR USE WITH ALL CFC, HCFC AND HFC REFRIGERANTS.

Catch All Liquid Line Burnout Drier

Burnout driers are used in the suction line to clean up refrigeration and air conditioning systems after a compressor motor burn out. The solid core is composed of 70% activated alumina and 30% molecular sieves. The drier absorbs both moisture and harmful acids thereby protecting the new compressor against premature failure



Flare Type

Code	Model	Net Price
C050	3/8" Flare Burnout Drier DAS 083VV	£ 33.41
C051	1/2" Flare Burnout Drier DAS 084VV	33.41
C052	1/2" Flare Burnout Drier DAS 164VV	33.41
C053	5/8" Flare Burnout Drier C165-HH	22.92

Solder Type

Code	Model	Net Price
C060	5/8" Solder Burnout Drier C165-S-HH	£ 22.92
C063	5/8" Solder Burnout Drier C305-S-HH	39.29
C065	7/8" Solder Burnout Drier C-417-S-HH	57.96
C070	1-1/8" Solder Burnout Drier C-419STHH	78.85

Catch All 2 Way Heat Pump Drier

The Catch-All Heat Pump Driers internal construction allows reversible refrigerant flow while providing effective filtration and contaminant retention. External check valves are not required

Flare Type

Code	Model	Net Price
C120	3/8" Flare Two Way Drier HPC-103F	£26.09
C121	1/2" Flare Two Way Drier HPC-104F	27.30

Solder Type

Code	Model	Net Price
C126	3/8" Solder Two Way Drier HPC-103S	£26.89
C127	1/2" Solder Two Way Drier HPC-104S	27.30



Replaceable Filter Drier Cores

DC-48:

High moisture capacity replaceable solid core filter drier for HCFCs, HFC CFC refrigerants, mineral & polyester oils.

Code	Model	Net Price
C630	DC-48 High Moisture Solid Core Filter Drier	£ 17.67



DB-48:

Burn out cleanup solid core filter dryer suitable for HCFC, HFC and CFC refrigerants, mineral & polyester oils. This has been specifically designed to clean up systems which have had a major hermetic burn out.

Code	Model	Net Price
C631	DB-48 Burn Out Solid Core Filter Drier	£ 17.67

DA-48

A standard replaceable solid core filter drier. Suitable for HCFC, HFC and CFC refrigerants, mineral & alkyl benzene oil.

Code	Model	Net Price
C632	DA-48 Standard Solid Core Filter Drier	£ 17.67

High degree of activation in the core gives it maximum water retention capacity, excellent acid removal characteristics and the ability to remove the by-products of oil decomposition.

The uniform grains, which are of the optimum size, gives the porous core a large surface area. This results in the triple filtration of the refrigerant, allowing it to catch large amounts of dirt with only a negligible pressure drop.

The moulded core has a uniform porosity throughout its entire length and surface. This results in the core being able to remove large amounts of water in a single pass, thereby protecting the expansion valve from freezing up and minimising the risk of acid formation within the system.

The replaceable solid core has the ability to withstand pressure surges, and therefore vibration and attrition is not a concern. Approved for use with all CFC, HCFC and HFC refrigerants.

Dry All replaceable solid cores provide superior suction line compressor protection.

All Dry All replaceable solid cores are individually packed in metal cans then hermetically sealed against moisture and dirt to preserve freshness.

Standard sizes means that it is easy to install them in existing systems.

APPROVED FOR USE WITH ALL CFC, HCFC AND HFC REFRIGERANTS.

Refrigeration Oils

Mineral Oil

Code	Type	Size	Net Price
M041	Suniso 3GS	4 Litre	£ 22.79

Ester Oil

M066	RL-32H	1 Ltre	22.02
M067	RL-32H	5 Litre	79.66
M064	RL-68H	1 Litre	25.44
M065	RL-68H	5 Litre	94.71

climalife®



Oil Pump

Code	Type	To suit	Net Price
Q135	OP-1	5 Litre Can	£ 69.95



Copper Spun Driers

COMMON FEATURES:

- All molecular sieve
- Spun copper shell
- Contains 4AXH9 which is compatible with most refrigerants including R-134a and MP-39



DX-3 ADDITIONAL FEATURES:

- May be crimped, swaged or flared to meet most application on units to 1/2 hp
- For capillary connections, simply pinch tube.

DX-4 ADDITIONAL FEATURES:

- For 3/16" through 3/8" connections on units up to 1-1/2 ton
- Extended ends may be cut at any point for desired size and simple installation
- Hermetically sealed ends



DX-5 ADDITIONAL FEATURES:

- For units up to 1-1/2 ton
- For charging on purging, a charging tee and access fitting are supplied on one end

Code	Model	Net Price
C448	DX3 1/4" x 1/4" Copper Spun Drier	£1.83
C449	DX-4 Charging Drier	3.79
C443	DXA-5 Universal Charging Drier	6.11
C444	MSCD-30 Copper Spun Drier	1.76

Vibration Eliminators

Code	Model	Description	Net Price
D200	1/4"	Vibration Absorber	£5.40
D201	3/8"	Vibration Absorber	5.82
D202	1/2"	Vibration Absorber	6.20
D203	5/8"	Vibration Absorber	6.77
D204	3/4"	Vibration Absorber	8.87
D205	7/8"	Vibration Absorber	9.68
D206	1.1/8"	Vibration Absorber	12.65
D207	1.3/8"	Vibration Absorber	17.89



APPLICATIONS

A VIBRATION ELIMINATOR CAN BE INSTALLED IN BOTH THE SUCTION AND DISCHARGE LINES OF AIR-CONDITIONING AND REFRIGERATION SYSTEMS.

VIBRATION ELIMINATORS ARE SUITABLE FOR HCFC, HFC AND CO2 REFRIGERANTS, ALONG WITH THEIR ASSOCIATED OILS



Sporlan Liquid Line Sight Glasses

Combination Moisture & Liquid Indicator for Refrigerants 134a, 22, 404A, 407C, 407F, 410A or 507



Solder Type

Code	Model	Net Price
C172	SA-12S 1/4" Solder Sight Glass	£ 4.56
C175	SA-13S 3/8" Solder Sight Glass	6.79
C178	SA-14S 1/2" Solder Sight Glass	
C182	SA-15S 5/8" Solder Sight Glass	
C214	SA-17S 7/8" Solder Sight Glass	
C215	SA-19S 1-1/8" Solder Sight Glass	



Flare Type

Code	Model	Net Price
C173	SA-12 1/4" Flare Sight Glass	£ 6.79
C176	SA-13 3/8" Flare Sight Glass	7.84
C179	SA-14 1/2" Flare Sight Glass	9.13
C181	SA-15 5/8" Flare Sight Glass	15.12



Male/Female Type

Code	Model	Net Price
C174	SA-12FM 1/4" Female/Male Sight Glass	£8.08
C177	SA-13FM 3/8" Female/Male Sight Glass	9.13
C180	SA-14FM 1/2" Female/Male Sight Glass	15.10



Danfoss Ball Valves

GBC ball valves are manually operated shut-off valves suitable for applications where bi-directional flow is a requirement.

GBC valves are approved for applications in liquid, suction, and hot gas lines in refrigeration and air conditioning systems.

GBC valves offer maximum tightness across the seat and seal, with minimum pressure drop.

GBC valves give maximum flow in the fully open position. They are designed for operation within a broad temperature range and are approved for use with any fluorinated refrigerant. Standard GBC valves may be used in applications using high pressure refrigerants, including R410A



Code	Model	Description	Net Price
D061	1/4"	Ball Valve	£ 14.39
D062	3/8"	Ball Valve	14.69
D063	1/2"	Ball Valve	14.99
D064	5/8"	Ball Valve	15.29
D065	7/8"	Ball Valve	22.05
D066	1.1/8"	Ball Valve	22.84



Parker Sporlan Solenoid Valves

V-Series is a new range of solenoid valves for the liquid line, suction line and hot gas service for refrigeration and AC applications.

V-series are compatible with all CFC, HCFC and HFC refrigerants and blends and most refrigeration oils in the limit of MRP of 35 bar. specifications

V-Series are compatible with all CFC, HCFC and HFC refrigerants and blends and most refrigeration oils in the limit of MRP of 35 bar. Minimum refrigerant temperature is -40°C, maximum refrigerant temperature is +105°C.



Code	Model	Connections	Part No.	Net Price
F630	V4F2	1/4" Flare	RT14-YB14	£ 19.95
F632	V4F3	3/8"	RT14-YB14	19.49
F633	V13F4	1/2"	RT14-YB14	41.32
F636	V19F5	5/8"	RT14-YB14	53.27
Code	Model	Connections	Part No.	Net Price
F631	V4S2	1/4" Solder	RT14-YB14	£ 24.79
F634	V13S4	1/2"	RT14-YB14	41.32
F635	V19S5	5/8"	RT14-YB14	64.37
F637	V23S6	3/4"	RT14-YB14	86.90
F638	V23S7	7/8"	RT14-YB14	94.96
F639	V23S9	1-1/8"	RT14-YB14	113.59



Solenoid Valves are supplied WITHOUT Coils

Coil with Terminal Box

Code	Model	Voltage	Part No.	Net Price
F641	EV-240-TB	240V 50Hz	RT14 230/50-60	£ 12.66
F642	EV-24-TB	24V 50Hz	RT14 24/50-60	12.89
F645	PG9	Din Connector	600000R	1.81



PG9 Din Connector required with Coil

Danfoss Solenoid Valves

Body Only (Coils Sold Separately)

EVR (NC) is a normally closed, direct or servo operated solenoid valve for liquid, suction and hot gas lines with fluorinated refrigerants.



Code	Model	Connections	Part No.	Net Price
F600	EVR3	1/4" Flare	032F1205	£ 31.66
F599	EVR3	3/8"	032F1203	33.80
F604	EVR6	1/2"	032F1235	43.25
F605	EVR10	5/8"	032F1238	63.72
Code	Model	Connections	Part No.	Net Price
F606	EVR3-S	1/4" Solder	032F1206	£ 31.66
F598	EVR3-S	3/8"	032F1204	32.77
F608	EVR6-S	1/2"	032F1209	43.25
F610	EVR10-S	5/8"	032F1214	61.92
F612	EVR-15S	7/8"	032F1240	103.91
F613	EVR-20S	1-1/8"	032F1244	163.55



Demanding applications, with IP67, for valve range B, 10W ac / 18W dc, IP67
Clip-on system for fast, easy fitting and removal. Encapsulated coils with long operation life Ambient temperature: Up to +80°C. IP 67 for moist environments with terminal box

Code	Model	Connections	Part No.	Net Price
F621	Coil 230V AC Terminal Box 10W			£ 23.86
F618	Coil 230V AC 1M Cable 10W			23.86
F619	Coil 24V AC 1M Cable 10W			23.86
F275	Coil 230V to suit AKV Valve			35.70



AKV are electric expansion valves designed for refrigeration plants. The AKV valves are supplied as a component programme, as follows: • Separate valve. • Separate coil with terminal box or cable.

Danfoss Expansion Valves

Angleway valve body, inlet size 3/8 inch, outlet size 1/2 inch, capillary tube length 1.5 m, max. working pressure 34.0 bar.



Internally Equalised

Code	Model	Description	Net Price
F500	TX2 R22	Exp Valve 3/8F X 1/2F 068Z3206	£ 44.63
F502	TN2 R134a	Exp Valve 3/8F X 1/2F 068Z3346	33.20
F504	TS2 R404a	Exp Valve 3/8F X 1/2F 068Z3400	34.49

Externally Equalised

Code	Model	Description	Net Price
F516	TEX2 R22	Exp Valve 3/8F X 1/2F 063Z3209	£ 66.68
F518	TEN2 R134a	Exp Valve 3/8F X 1/2F 063Z3348	53.12
F520	TES2 R404A	Exp Valve 3/8F X 1/2F 068Z3403	53.31
F531	TES2 R404A	Exp Valve 3/8F X 1/2S 068Z3415	54.97



Danfoss Orifices

Orifice to Suit T*2 and TE*2 Valves

Code	Model	To Suit Valves	Net Price
F540	00 Valve Orifice	T2/TE2 Valve	£ 12.69
F541	01 Valve Orifice	T2/TE2 Valve	12.69
F542	02 Valve Orifice	T2/TE2 Valve	12.69
F543	03 Valve Orifice	T2/TE2 Valve	12.69
F544	04 Valve Orifice	T2/TE2 Valve	12.69
F545	05 Valve Orifice	T2/TE2 Valve	12.69
F546	06 Valve Orifice	T2/TE2 Valve	12.69



Danfoss Orifices

Orifice to Suit Solder Valves Only T*2 and TE*2

Code	Model	To Suit Valves	Net Price
F506	NO:00 Solder Orifice	T2/TE2 Valve	£ 12.68
F507	NO:01 Solder Orifice	T2/TE2 Valve	12.68
F508	NO:02 Solder Orifice	T2/TE2 Valve	12.68
F509	NO:03 Solder Orifice	T2/TE2 Valve	12.68
F510	NO:04 Solder Orifice	T2/TE2 Valve	12.68
F511	NO:05 Solder Orifice	T2/TE2 Valve	12.68
F512	NO:06 Solder Orifice	T2/TE2 Valve	12.68



F515	3/8" Solder Adaptors	T2/TE2 Valve	12.68
------	----------------------	--------------	-------

Thermostatic expansion valves regulate the injection of refrigerant liquid into evaporators. Injection is controlled by the refrigerant superheat. The range of thermostatic expansion valves cover different valves designed for specific applications. The valves are delivered with connections in flare, solder copper or stainless steel / copper bi-metal connections. Temperature range from -60°C to +50°C. Rated capacity: 0.5 to 1890 kW (R 22).

T*2 Range – Order valve and orifice separately
Range N -40°C to +10°C Without MOP

Pressure Switches

RANCO

Code	Model	Description	Net Price
E060	016-H6703	L/P Switch Auto Reset	£ 21.27
E061	016-H6705	L/P Switch Manual Reset	22.56
E062	016-H6750	H/P Switch Auto Reset	22.65
E063	016-H6751	H/P Switch Manual Reset	23.96
E064	017-H4701	Dual Press Switch Auto	39.63
E065	017H4703	Dual Press Control Manual Reset	46.45
E067	017-H4705	Dual Press Switch Auto/Man	42.23



DANFOSS

Code	Model	Description	Net Price
E800	KP1 060L110166	Low Pressure Control	£ 23.53
E804	KP5 060L114266	Pressure Control HP Auto Reset	23.11
E805	KP5 060L117366	Pressure Control Man Reset	24.20
E808	KP15 060-126166	Pressure Control Auto	82.72
E809	KP15 060-124366	Pressure Control Auto/Man	65.29



Thermostats (Freezers & Cold Rooms)

RANCO

Code	Model	Description/Temp	Net Price
E070	016-H6901	T/Stat (-18'+13')	£ 35.46
E071	016-H6902	T/Stat (-5/+25)	32.65
E072	016-H6903	T/Stat (+10/+40)	32.86
E075	016-H6922	T/Stat -18/+13 Capillary	26.91
E077	016-H6950	T/Stat -35/-7 Coiled Capillary	26.59
E078	016-H6951	T/Stat -18/+13 Coiled Capillary	24.70
E079	016-H6954	T/Stat Coiled Capillary -5/25c	31.10
E080	016-H6980	T/Stat (-18'+13') X A	30.18
E081	016-H6981	X AMB T/Stat (-5'+25') 1.7 TO 12 K	33.64
E082	016-H6983	T/Stat(+10' to +40') X A	31.99



Thermostats (Fridges, Freezers & Bottle Coolers)

RANCO

Code	Model	Description	Net Price
E020	Varifix VC-1	T/Stat Refrigerator	£ 7.54
E024	Varifix VS-5	T/Stat Freezer M.O.R. Signal	7.70
E026	Varifix VB-7	Bottle Cooler	8.40
E028	Varifix VT-9	Fridge/Freezer/Larder	8.75



DANFOSS

Code	Part Number	Description	Net Price
E005	077B7001	T/Stat Kit NO.1	£ 9.54
E006	077B7002	T/Stat Kit NO.2	11.94
E007	077B7003	T/Stat Kit NO.3	13.35
E008	077B7004	T/Stat Kit NO.4	12.50
E009	077B7005	T/Stat Kit NO.5	11.49
E010	077B7006	T/Stat Kit NO.6	12.57
E011	077B7007	T/Stat Kit NO.7	16.05
E012	077B7008	T/Stat Kit NO.8	10.92



ACCESSORIES

Code	Model	Description	Net Price
E141		L Bracket	£ 2.29
E142		Flat Bracket	1.86
E144	PCP1000SV	Pressure Coupler 1M	5.68



Fan Motors



Multi Fit Sleeve Type

Code	Watts	Type	Net Price
K400	5 Watt	Sleeve Type Multi-Fit Fan Motor	£ 9.65
K401	7 Watt	Sleeve Type Multi-Fit Fan Motor	10.68
K402	10 Watt	Sleeve Type Multi-Fit Fan Motor	10.58
K403	16 Watt	Sleeve Type Multi-Fit Fan Motor	11.42
K404	18 Watt	Sleeve Type Multi-Fit Fan Motor	11.69
K405	25 Watt	Sleeve Type Multi-Fit Fan Motor	15.21
K406	34 Watt	Sleeve Type Multi-Fit Fan Motor	16.40



Ball Bearing Type

Individually boxed complete with fixings. • 1 metre power cord for greater flexibility of installation. • 3 tapped holes for front / rear mounting.

- Adjustable bolt-plate for base / top mounting on brackets.
- 4 corner bolts for ring mounting • CE certified / ROHS compliant. • 12 month warranty.

Code	Watts	Type	Net Price
K410	5 Watt	Ball Bearing Type Multi-Fit Fan Motor	£ 10.97
K411	10 Watt	Ball Bearing Type Multi-Fit Fan Motor	11.58
K412	16 Watt	Ball Bearing Type Multi-Fit Fan Motor	12.90
K413	16 Watt	Ball Bearing Type Multi-Fit Fan Motor	12.90
K414	18 Watt	Ball Bearing Type Multi-Fit Fan Motor	14.40
K415	25 Watt	Ball Bearing Type Multi-Fit Fan Motor	16.36
K416	34 Watt	Ball Bearing Type Multi-Fit Fan Motor	18.61



Fan Blades

Code	Sucker	Code	Blower	Net Price
K440	154mm 28' Fan Blade	K453	154mm 28' Fan Blade	£ 2.10
K441	154mm 34' Fan Blade	K454	154mm 34' Fan Blade	2.10
K442	172mm 28' Fan Blade	K455	172mm 28' Fan Blade	2.25
K443	172mm 34' Fan Blade	K456	172mm 34' Fan Blade	2.25
K444	200mm 28' Fan Blade	K457	200mm 28' Fan Blade	2.42
K445	200mm 34' Fan Blade	K458	200mm 34' Fan Blade	2.42
K446	230mm 28' Fan Blade	K459	230mm 28' Fan Blade	2.58
K447	230mm 34' Fan Blade	K460	230mm 34' Fan Blade	2.58
K448	254mm 28' Fan Blade	K461	254mm 28' Fan Blade	3.60
K449	254mm 34' Fan Blade	K462	254mm 34' Fan Blade	3.71
K450	300mm 28' Fan Blade	K453	300mm 28' Fan Blade	4.67
K451	300mm 34' Fan Blade	K464	300mm 34' Fan Blade	4.67



Ring Mounts

Code	Part No.	Description	Net price
K470	FRS-154	154mm Fan Mount	£ 4.03
K471	FRS-172	172mm Fan Mount	4.35
K472	FRS-200	200mm Fan Mount	4.69
K473	FRS-230	230mm Fan Mount	4.94
K474	FRS-254	254mm Fan Mount	5.73
K475	FRS-300	300mm Fan Mount	6.15



Fan Motors



Axial Fans

Code	Model	Net Price
K190	80 x 80 x 38mm Axial Fan Motor + Lead 40 m3 per hr	£9.65
K191	120x120x25mm Axial Fan Motor + Lead 71 m3/hr	11.64
K192	120x120x38mm Axial Fan Motor + Lead 132 m3/hr	11.67
K193	92x92x25mm Axial Fan Motor	11.88



These axial mini shaded fan motors have a compact structure and small volume. These fans are made out of reinforced plastic so are light weight, low noise and are used on refrigeration equipment, bottle coolers, vending machines and other ventilating and cooling equipment.

Guard Mounted Fans

Code	Model	Net Price
K187	GMA1-250S-1 Guard Mounted Fan	£ 53.74
K186	GMA1-300S-1 Guard Mounted Fan	58.02
K181	GMA1-300B-1 Guard Mounted Fan	63.50
K182	GMA1-350S-1 Guard Mounted Fan	61.07
K183	GMA1-330B-1 Guard Mounted Fan	71.97
K188	GMA1-400S-1 Guard Mounted Fan	67.15
K189	GMA1-450S-1 Guard Mounted Fan	82.78



Tangential Fans

Code	Model	Net Price
Single Outlet		
K151	Tangential Fan 60mm x 120mm A.O.D	£ 15.95
K152	Tangential Fan 60mm x 180mm A.O.D	16.40
K153	Tangential Fan 60mm x 240MM A.O.D	17.43
K154	Tangential Fan 60mm x 300MM A.O.D	21.57
Double Outlet		
K157	Tangential Fan 60mm x180MM A.O.D	41.29



Fan Motor Plain Shaft 33 Range

33 range of shaded pole and PSC (Permanent split capacitor) motors are manufactured in 2, 4 and 6 pole versions typically ranging from 4W up to 100W, the majority are single speed although some are multi-speed. They are visibly different from 84 range as they have a black round body which is 3.3" in diameter (84mm).

Code	Model	CCW	Code	CW	Shaft Dia/Length	Net Price
K070	7W Motor 230V	33TS7-1	K070CW	33TD7-2	1/4" x 6.35mm	£ 31.83
K071	13W Motor 230V	33TS13-1	K071CW	33TD13-1	5/16" x 7.93mm	40.39
K072	18W Motor 120/240V	33TS18-5	K072CW	33TD18-1	5/16" x 7.93mm	46.67
K073	24W Motor 230V	33TS24-1	K073CW	33TD24-1	5/16" x 7.93mm	42.97
K074	25W Motor 230V	33TS25-1	K074CW	33TD25-1	5/16" x 7.93mm	65.82
	35W Motor 120/240V	-	K075CW	33TD35-1	5/16" x 7.93mm	59.05
K076	35W Motor 230V	33TS35-1	-	-	5/16" x 7.93mm	77.37
K077	42W Motor 110V	33TS42-1	-	-	5/16" x 7.93mm	44.80
K078	70W Motor 230V	33TS7-S058	-	-	5/16" x 7.93mm	91.31



L'Unite Hermetique Compressors

LBP R404A

Code	Model	HP	Tubed/Valved	Phase	Net Price
I406	CAE2417Z	1/2	T/T	1PH	£ 174.11
I408	CAJ2428Z	1/2	T/T	1PH	273.47
I408A	CAJ2428Z	1/2	V/T	1PH	246.84
I409	CAJ2432Z	5/8	V/T	1PH	280.88
I409A	CAJ2432Z	5/8	T/T	1PH *	276.93
I410	CAJ2446Z	3/4	T/T	1PH *	284.42
I410A	CAJ2446Z	3/4	V/T	1PH	308.31
I411	CAJ2464Z	1-1/2	T/T	1PH *	290.43
I411A	CAJ2464Z	1-1/2	V/T	1PH	366.05
I412	FH2480Z	2	T/T	1PH	409.22
I412A	FH2480Z	2	V/V	1PH	464.21
I423	TFH2480Z	2	T/T	3PH	409.22
I423A	TFH2480Z	2	V/V	3PH	464.16
I413	FH2511Z	2.5	V/V	1PH	482.70
I413A	FH2511Z	2.5	T/T	1PH	473.70
I420	TFH2511Z	2.5	T/T	3PH	421.53
I420A	TFH2511Z	2.5	V/V	3PH	462.47



LBP R404A

Code	Model	HP	Tubed/Valved	Phase	Net Price
I423	AEZ4440Z	1/3	T/T	1PH	£ 143.77
I426	CAE9460Z	1/2	T/T	1PH *	197.32
I427	CAE9470Z	1/2	T/T	1PH *	209.98
I428	CAJ9480Z	5/8	T/T	1PH *	284.42
I429A	CAJ9510Z	1	T/T	1PH *	298.64
I429	CAJ9510Z	1	V/T	1PH	316.54
I430A	CAJ9513Z	1.1/8	T/T	1PH *	309.15
I430	CAJ9513Z	1.1/8	V/T	1PH	345.47
I431	CAJ4517Z	1.1/4	V/T	1PH	356.58
I431A	CAJ4517Z	1.1/4	T/T	1PH *	320.62
I436A	TAJ4517Z	1.1/4	T/T	3PH	307.53
I432A	CAJ4519Z	1.1/2	T/T	1PH *	336.17
I432	CAJ4519Z	1.1/2	V/T	1PH	361.98
I437	TAJ4519Z	1.1/2	T/T	3PH	346.97
I438	FH4524Z	2	V/V	1PH	448.18
I439	TFH4524Z	2	V/V	3PH	499.95
I434	FH4513Z	2.1/2	T/T	1PH	477.48
I440	TFH4513Z	2.1/2	T/T	3PH	414.75



* Denotes Loose Electrics
T/T = Suction & Discharge Tubes
V/T = Suction Valve & Discharge Tube
V/V = Suction & Discharge Valves



L'Unite Hermetique Compressors

HBP R134A

Code	Model	HP	Tubed/Valved	Phase	Net Price
I604	THB4419YFZ	1/5	T/T	1PH	£ 105.41
I451	AEZ4430Y	1/4	T/T	1PH	119.95
I452	CAE4440Y	1/3	T/T	1PH	136.21
I448	CAE4448Y	3/8	T/T	1PH	157.05
I457	CAE4456Y	3/8	T/T	1PH	160.05
I454	CAJ4461Y	1/2	T/T	1PH	242.28
I454A	CAJ4461Y	1/2	V/T	1PH	308.31
I455	CAJ4492Y	3/4	T/T	1PH	299.78
I456A	CAJ4511Y	1	T/T	1PH	336.77
I456	CAJ4511Y	1	V/T	1PH	338.21
I458	FH4518Y	1.1/2	V/V	1PH	412.59
I423	TFH4518Y	1.1/2	V/V	3PH	403.40



Compressors listed above are normally in stock.
For any versions not listed please ring us for a quotation. * Denotes Loose Electrics
T/T = Suction & Discharge Tubes
V/T = Suction Valve & Discharge Tube
V/V = Suction & Discharge Valves

Rotalock Valves

Code	Description	Net Price
IS452	1-1/4" - 12 - 5/8" Rotalock Valve	£ 35.40
IS454	1-1/4" - 12 - 7/8" Rotalock Valve	48.27
IS455	1-1/4" - 12 - 1-1/8" Rotalock Valve	55.17
IS459	1-1/4" - 12 Rotalock Gasket	1.67



Maneurop Compressors

LBP R404A (7) -40°C TO -10°C EVAPORATING

Code	Model	Approx HP	Disp. c.c.	Phase	Net Price
I675	MTZ-18	1-1/2	30	1PH	£ 413.25
I676	MTZ-22	1-3/4	38	1PH	481.12
I677	MTZ-28	2	48	1PH	518.02
I678	MTZ-32	2-3/4	53	1PH	560.81
I679	MTZ-36	3	60	1PH	599.95
I681	MTZ-18	1-1/2	30	3PH	£413.25
I682	MTZ-22	1-3/4	38	3PH	506.21
I683	MTZ-28	2	48	3PH	544.58
I684	MTZ-32	2-3/4	53	3PH	548.16
I685	MTZ-36	3	60	3PH	600.66
I686	MTZ-40	3-1/2	67	3PH	603.61
I687	MTZ-50	4	85	3PH	767.26
I688	MTZ-64	5	107	3PH	732.87
I689	MTZ-80	6-1/2	135	3PH	1029.77
I690	MTZ-100	8-1/2	171	3PH	1251.68
I691	MTZ-125	10	215	3PH	1600.16
I692	MTZ-160	13	271	3PH	1847.60



Rotalock Valves

I722	3/8" Discharge	MTZ18-28	£ 34.86
I723	1/2" Suction	MTZ18-28	43.71
I728	3/4" Discharge	MTZ44-80	53.82
I732	1-1/8" Suction	MTZ80-160	79.95



Maneurop Oil

I719	2 Litre Ester Oil to Suit MTE/Z Models	£ 99.95
------	--	---------



Cubigel Compressors

R404A Low Back Pressure (7) -40°C TO -10°C Evaporating



Code	Model	HP	CC	Capacity Watts(W)	BTU/HR	Net Price
I342	ML60FB	1/6	5.5	262	894	£ 99.95
I343	ML80FB	1/4	8.1	372	1,272	105.63
I344	ML90FB	1/3	9.8	407	1,391	110.09
I346	MP12FB	3/8	12.0	523	1,788	117.36
I347	MP14FB	3/8	14.0	628	2,146	122.81
I349	MX18FB	5/8	18.0	814	2,782	197.37
I353	MS26FB-T	3/4	26.0	1,221	4,172	233.19
I354	MS26FB-V	3/4	26.0	1,221	4,172	240.78
I355	MS34FB-V	1	34.0	1,628	5,563	262.95
I356	MS34FB-T	1	34.0	1,628	5,563	254.68

R404A/R407C High/Med Back Pressure (8) -25°C TO +10°C Evaporating

Code	Model	HP	CC	Capacity Watts(W)	BTU/HR	Net Price
I360	ML60TB	1/4	5.7	814	2,782	£ 92.28
I361	ML80TB	3/8	7.6	1,105	3,775	103.85
I362	ML90TB	3/8	8.8	1,326	4,530	105.21
I364	MP12RB	1/2	12.0	1,838	6,278	144.91
I365	MP14RB	1/2	14.0	2,093	7,142	152.64
I366	MX16TB	5/8	16.0	2,378	8,126	192.39
I357	MX18TB	3/4	18.0	2,710	9,259	194.07
I367	MS26TB-T	1	26.0	4,011	13,705	221.49
I368	MS26TB-V	1	26.0	4,011	13,705	231.75
I358	MS34TB-V	1-5/8 *	34.0	5,293	18,084	239.86
I359	MS34TB-V	1-5/8 *	34.0	5,293	18,084	229.59

R134A Low Back Pressure (7) -35°C TO -10°C Evaporating

Code	Model	HP	CC	Capacity Watts(W)	BTU/HR	Net Price
I322	GL60AAa	1/5	6.0	814	2,782	£ 94.34
I323	GL90AAa	1/4	9.1	225	768	103.38
I321	GP12FB	1/3	12.1	262	894	117.62
I320	GP14FB	3/8	14.2	314	1071	123.42
I319	GP16FB	3/8	16.2	366	1249	149.13
I318	GX18FB	5/8	18.0	401	1368	187.50

R134A High/Med Back Pressure (8) -25°C TO +10°C Evaporating

Code	Model	HP	CC	Capacity Watts(W)	BTU/HR	Net Price
I324	GL60PB	1/5	5.7	523	1,784	£ 87.21
I325	GL80TB	1/5	7.6	663	2,262	98.69
I326	GL90TB	1/4	8.9	791	2,699	102.75
I328	GP12TB	3/8	12.1	1,070	3,651	117.45
I329	GP14TB	3/8	14.2	1,198	4,088	87.21
I330	GP16TB	3/8	16.2	1,442	4,920	125.25
I336	GX18TB	1/2	18.4	1,663	5,674	169.95
I340	GS26TB-T	3/4	25.9	2,489	8,492	216.13
I341	GS26TB-V	3/4	25.9	2,489	8,492	240.89
I359	GS34TB-T	1	34.4	3,409	11,632	261.78
I358	GS34TB-V	1	34.4	3,409	11,632	271.29

Capacity at Cond. +55°C

7) Evap. -23°C

8) Evap. +7.2°C

All models 230V 1.50Hz

Models designated -V have suction valve fitted

T models do not, nor do models with no suffix.

*Note: MS34TB is limited to a lowest evaporating temperature of -15°C.



Embraco Compressors



R404A Low Back Pressure (7) -40C to -23.3C Evaporating

Code	Model	HP	CC	Capacity Watts(W)	BTU/HR	Net Price
I370	NEK2134GK	1/2	8.78	464	1,583	£ 91.30
I371	NEK2150GK	5/8	12.1	616	2,02	104.77
I372	NEK2168GK	3/4	14.3	704	2,402	116.00
I373	NT2178GK	7/8	17.4	788	2,689	146.69
I374	NT2180GK	1	20.4	934	3,187	153.42
I375	NT2192GK CSR	1.1/4	22.4	1,088	3,712	162.40
I376	NJ2192GK-V CSR	1.1/4	22.4	1,088	3,712	191.58
I377	NJ2212GK CSR	1.1/2	34.3	1,477	5,040	194.58
I378	NJ2212GK-V CSR	1.1/2	34.3	1,477	5,040	205.80

R404A High/Med Back Pressure (8) -20C to +10C Evaporating

Code	Model	HP	CC	Capacity Watts(W)	BTU/HR	Net Price
I379	NEK6165GK	1/4	6.2	965	3,293	£ 76.33
I380	NEK6181GK	1/4	7.3	1,089	3,716	77.83
I381	NEK6210GK	1/3	8.7	1,303	4,446	81.57
I382	NEK6213GK	1/2	12.1	1,750	5,971	84.57
I383	NT6220GK CSR	5/8	14.5	2,119	7,230	156.41
I384	NT6222GK CSR	7/8	17.4	2,500	8,530	160.90
I385	NT6224GK CSR	1	20.4	3,512	11,983	169.13
I386	NT6226GK CSR	1	22.4	3,355	11,447	186.35
I387	NJ9226GK-V CSR	1	21.77	3,249	11,086	201.34
I388	NJ9232GK CSR	1.1/4	26.2	4,021	13,720	194.58
I389	NJ9232GK-V CSR	1.1/4	26.2	4,021	13,720	205.80
I390	NJ9238GK CSR	1.1/2	32.7	4,827	16,470	196.07

R134A Low Back Pressure (7) -30C to -5C Evaporating

Code	Model	HP	CC	Capacity Watts(W)	BTU/HR	Net Price
I391	NE2130Z	1/3	12.1	344	1,174	£ 106.27

R134A High/Med Back Pressure (8) -15C to +10C Evaporating

Code	Model	HP	CC	Capacity Watts(W)	BTU/HR	Net Price
I392	EMT6144Z	1/5	5.2	570	1,945	£ 59.87
I393	EMT6170Z	1/4	7.6	806	2,750	71.10
I394	NEK6160Z	1/4	8.4	716	2,443	70.07
I395	NEK6170Z	1/4	8.4	837	2,856	71.84
I396	NEK6187Z	1/3	10.0	967	3,299	74.21
I397	NEK6210Z	1/3	12.1	1,140	3,890	95.04
I398	NEK6212Z	1/2	14.3	1,292	4,408	95.79
I399	NEK6214Z	1/2	16.8	1,486	5,070	121.99
I400	NT6215Z	5/8	17.4	1,608	5,486	139.20
I401	NT6220Z	3/4	22.4	2,016	6,879	174.37
I402	NJ6226Z CSR	1	34.3	2,969	10,130	219.24

Unless otherwise indicated, all compressors are CSIR start.

Models ending in -V are fitted with a suction valve, all other models have a suction stub.

Capacity at Cond. +55°C

7) Evap. -23.3°C

8) Evap. +7.2°C

All models 230v, 1.50Hz.

Models ending -V have suction valve fitted.



Packaged Refrigeration Systems

RIVACOLD

Monoblock Through the Wall Medium Temp

Code	Model	Net Price
JC350	FTM003Z001 M/T Monoblock	£ 879.00
JC351	FTM007Z001 M/T Monoblock	971.00
JC352	FTM009Z001 M/T Monoblock	998.00
JC353	FTM012Z001 M/T Monoblock	1059.00
JC354	FTM016Z001 M/T Monoblock	1239.00
JC355	FTM022Z002 M/T Monoblock	1375.00
JC356	FTM028Z002 M/T Monoblock	1449.00
JC357	FTM034Z002 M/T Monoblock	1679.00
JC358	FTM040Z002 M/T Monoblock	1798.00



Monoblock Through the Wall Medium Temp

Code	Model	Net Price
JC360	FTL003Z001 L/T Monoblock	£ 1029.00
JC361	FTL006Z001 L/T Monoblock	1120.00
JC362	FTL009Z001 L/T Monoblock	1128.00
JC363	FTL012Z001 L/T Monoblock	1220.00
JC364	FTL016Z002 L/T Monoblock	1485.00
JC366	FTL020Z002 L/T Monoblock	1749.00
JC366	FTL024Z002 L/T Monoblock	1835.00

Monoblock Ceiling Mounted Medium Temp

Code	Model	Net Price
JC366	SFM003Z001 M/T Monoblock	£ 1149.00
JC351	SFM006Z001 M/T Monoblock	1268.00
JC352	SFM007Z001 M/T Monoblock	1298.00
JC353	SFM009Z001 M/T Monoblock	1418.00
JC354	SFM016Z001 M/T Monoblock	1499.00
JC355	SFM022Z002 M/T Monoblock	2139.00
JC356	SFM034Z002 M/T Monoblock	2179.00
JC357	SFM054Z002 M/T Monoblock	2749.00

Monoblock Ceiling Mounted Low Temp

Code	Model	Net Price
JC374	SFL003Z001 L/T Monoblock	£ 1265.00
JC351	SFL006Z001 L/T Monoblock	1368.00
JC352	SFL008Z001 L/T Monoblock	1529.00
JC353	SFL009Z001 L/T Monoblock	1549.00
JC354	SFL016Z001 L/T Monoblock	2298.00
JC355	SFL020Z002 L/T Monoblock	2478.00
JC356	SFL024Z002 L/T Monoblock	2789.00
JC357	SFL034Z002 L/T Monoblock	2998.00



The full range of Rivacold products are available upon request
Climate Controls and Spares are authorised Rivacold distributors

Evaporators

RIVACOLD

RS Small Panel Cooler 109 to 2,640w

Code	Part Number	Model	Type	Net Price
S100	2100100	RS1040CB	Small Panel Cooler	£ 74.70
S101	2100101	RS1060CB	Small Panel Cooler	80.04
S102	2100102	RS2100CB	Small Panel Cooler	113.39
S103	2100103	RS2130CB	Small Panel Cooler	121.39
S104	2100104	RS3180CB	Small Panel Cooler	181.42
S105	2100105	RS3290CB	Small Panel Cooler	200.10
S106	2100107	RS1040-BCB	Small Panel Cooler	88.04
S107	2100108	RS1060-BCB	Small Panel Cooler	94.71
S108	2100109	RS2100-BCB	Small Panel Cooler	128.06
S109	2100110	RS2130-BCB	Small Panel Cooler	142.74
S110	2100111	RS3180-BCB	Small Panel Cooler	190.76
S111	2100112	RS3290-BCB	Small Panel Cooler	208.10
S112	2100113	RS4380-BCB	Small Panel Cooler	252.13
S113	2100114	RS1040-BED	Small Panel Cooler	118.73
S114	2100115	RS1060-BEDCB	Small Panel Cooler	124.06
S115	2100117	RS2130-BEDCB	Small Panel Cooler	172.09
S116	2100118	RS3180-BEDCB	Small Panel Cooler	240.12
S117	2100119	RS3290B-EDCB	Small Panel Cooler	257.46
S118	2100120	RS4380B-EDCB	Small Panel Cooler	310.82

RSI Large Panel Cooler 440 to 11,600w

Code	Part Number	Model	Type	Net Price
S120	2100200	RSI1250CB	Large Panel Cooler	£ 206.77
S121	2100201	RSI2250CB	Large Panel Cooler	282.81
S122	2100202	RSI3250CB	Large Panel Cooler	413.54
S123	2100203	RSI4250CB	Large Panel Cooler	529.60
S124	2100204	RSI23503CB	Large Panel Cooler	586.96
S125	2100205	RSI33503CB	Large Panel Cooler	812.41
S126	2100206	RSI43503CB	Large Panel Cooler	1049.86
S127	2100207	RSI23507CB	Large Panel Cooler	526.93
S128	2100208	RSI33507CB	Large Panel Cooler	733.70
S129	2100209	RSI43507CB	Large Panel Cooler	961.81
S130	2100210	RSI1250EDCB	Large Panel Cooler	274.80
S131	2100211	RSI2250EDCB	Large Panel Cooler	364.18
S132	2100212	RSI3250EDCB	Large Panel Cooler	468.23
S133	2100213	RSI4250EDCB	Large Panel Cooler	585.63
S134	2100214	RSI23503EDCB	Large Panel Cooler	668.33
S135	2100215	RSI33503EDCB	Large Panel Cooler	905.79
S136	2100216	RSI43503EDCB	Large Panel Cooler	1151.24
S137	2100217	RSI23507EDCB	Large Panel Cooler	656.33
S138	2100218	RSI33507EDCB	Large Panel Cooler	885.78
S139	2100219	RSI43507EDCB	Large Panel Cooler	1127.23

Evaporators



RC Compact Cubic Cooler 602 to 8,120w

Code	Part Number	Model	Type	Net Price
S140	2100300	RC125-16CB	Compact Cubic Cooler	£ 241.45
S141	2100301	RC225-25CB	Compact Cubic Cooler	302.82
S142	2100302	RC225-30CB	Compact Cubic Cooler	338.84
S143	2100303	RC325-33CB	Compact Cubic Cooler	425.55
S144	2100304	RC325-45CB	Compact Cubic Cooler	466.90
S145	2100305	RC425-61CB	Compact Cubic Cooler	684.34
S146	2100306	RC125-16ED CB	Compact Cubic Cooler	325.50
S147	2100307	RC225-25ED CB	Compact Cubic Cooler	397.53
S148	2100308	RC225-30ED CB	Compact Cubic Cooler	433.55
S149	2100309	RC325-33ED CB	Compact Cubic Cooler	494.91
S150	2100310	RC325-45ED CB	Compact Cubic Cooler	534.93
S151	2100311	RC425-61ED CB	Compact Cubic Cooler	757.71

RCS Slimline Cubic Cooler 602 to 8,120w

Code	Part Number	Model	Type	Net Price
S155	2100724	RCS1250404ED CB	Slimline Cubic Cooler	£ 254.79
S156	2100732	RCS1250406ED CB	Slimline Cubic Cooler	310.82
S157	2100716	RCS1250408 CB	Slimline Cubic Cooler	248.12
S158	2100740	RCS1250408ED CB	Slimline Cubic Cooler	308.15
S159	2100701	RCS1250604 CB	Slimline Cubic Cooler	280.14
S160	2100725	RCS1250604ED CB	Slimline Cubic Cooler	356.18
S161	2100709	RCS1250606 CB	Slimline Cubic Cooler	273.47
S162	2100733	RCS1250606ED CB	Slimline Cubic Cooler	348.17
S163	2100717	RCS1250608 CB	Slimline Cubic Cooler	268.13
S164	2100741	RCS1250608ED CB	Slimline Cubic Cooler	329.50
S165	2100702	RCS2250404 CB	Slimline Cubic Cooler	385.53
S166	2100726	RCS2250404ED CB	Slimline Cubic Cooler	450.89
S167	2100710	RCS2250406 CB	Slimline Cubic Cooler	374.85
S168	2100734	RCS2250406ED CB	Slimline Cubic Cooler	441.55
S169	2100718	RCS2250408 CB	Slimline Cubic Cooler	352.18
S170	2100742	RCS2250408ED CB	Slimline Cubic Cooler	420.21
S171	2100703	RCS2250604 CB	Slimline Cubic Cooler	409.54
S172	2100727	RCS2250604ED CB	Slimline Cubic Cooler	493.58
S173	2100711	RCS2250606 CB	Slimline Cubic Cooler	393.53
S174	2100735	RCS2250606ED CB	Slimline Cubic Cooler	477.57
S175	2100719	RCS2250608 CB	Slimline Cubic Cooler	385.53
S176	2100743	RCS2250608ED CB	Slimline Cubic Cooler	452.23
S177	2100704	RCS3250404 CB	Slimline Cubic Cooler	533.60
S178	2100728	RCS3250404ED CB	Slimline Cubic Cooler	614.97
S179	2100712	RCS3250406 CB	Slimline Cubic Cooler	518.93
S180	2100736	RCS3250406ED CB	Slimline Cubic Cooler	598.97
S181	2100744	RCS3250408ED CB	Slimline Cubic Cooler	588.29
S182	2100705	RCS3250604 CB	Slimline Cubic Cooler	597.63
S183	2100729	RCS3250604ED CB	Slimline Cubic Cooler	677.67

Evaporators



RCS Slimline Cubic Cooler 602 to 8,120w

Code	N/A Part Number	Model	Type	Net Price
S184	2100713	RCS3250606 CB	Slimline Cubic Cooler	£573.62
S185	2100721	RCS3250606 CB	Slimline Cubic Cooler	556.28
S186	2100745	RCS3250608ED CB	Slimline Cubic Cooler	642.99
S187	2100706	RCS4250404 CB	Slimline Cubic Cooler	696.35
S188	2100714	RCS4250406 CB	Slimline Cubic Cooler	676.34
S189	2100738	RCS4250406ED CB	Slimline Cubic Cooler	777.72
S190	2100722	RCS4250408 CB	Slimline Cubic Cooler	664.33
S191	2100746	RCS4250408ED CB	Slimline Cubic Cooler	776.39
S192	2100707	RCS4250604 CB	Slimline Cubic Cooler	771.05
S193	2100715	RCS4250606 CB	Slimline Cubic Cooler	747.04
S194	2100739	RCS4250606ED CB	Slimline Cubic Cooler	841.75
S195	2100723	RCS4250608 CB	Slimline Cubic Cooler	729.70
S196	2100747	RCS4250608ED CB	Slimline Cubic Cooler	841.75

RCMR Standard Cubic Cooler 1,420 to 22,400w

S200	N/A	RCMR 2350404 CB	Standard Cubic Cooler	£ 633.65
S201	N/A	RCMR 2350804 CB	Standard Cubic Cooler	828.41
S202	N/A	RCMR 3350604 CB	Standard Cubic Cooler	1049.86
S203	N/A	RCMR 4350604 CB	Standard Cubic Cooler	1319.99
S204	N/A	RCMR 1350606 CB	Standard Cubic Cooler	509.59
S205	N/A	RCMR 2350406 CB	Standard Cubic Cooler	632.32
S206	N/A	RCMR 2350806 CB	Standard Cubic Cooler	803.07
S207	N/A	RCMR 3350606 CB	Standard Cubic Cooler	1029.85
S208	N/A	RCMR 4350606 CB	Standard Cubic Cooler	1260.63
S209	N/A	RCMR 1350608 CB	Standard Cubic Cooler	509.59
S210	N/A	RCMR 2350408 CB	Standard Cubic Cooler	638.99
S211	N/A	RCMR 2350808 CB	Standard Cubic Cooler	800.40
S212	N/A	RCMR 3350608 CB	Standard Cubic Cooler	1024.51
S213	N/A	RCMR 4350608 CB	Standard Cubic Cooler	1263.30
S214	N/A	RCMR 1350604 ED CB	Standard Cubic Cooler	598.97
S215	N/A	RCMR 2350404 ED CB	Standard Cubic Cooler	719.03
S216	N/A	RCMR 2350804 ED CB	Standard Cubic Cooler	919.13
S217	N/A	RCMR 3350604 ED CB	Standard Cubic Cooler	1144.57
S218	N/A	RCMR 4350604 ED CB	Standard Cubic Cooler	1454.06
S219	N/A	RCMR 1350606 ED CB	Standard Cubic Cooler	574.95
S220	N/A	RCMR 2350406 ED CB	Standard Cubic Cooler	700.35
S221	N/A	RCMR 2350806 ED CB	Standard Cubic Cooler	883.11
S222	N/A	RCMR 3350606 ED CB	Standard Cubic Cooler	1112.56



Evaporators



RCMR Standard Cubic Cooler 1,420 to 22,400w (Con't)

Code	Part Number	Model	Type	Net Price
S223	N/A	RCMR 1350608 EDCB	Standard Cubic Cooler	£ 564.28
S224	N/A	RCMR 2350408 EDCB	Standard Cubic Cooler	695.01
S225	N/A	RCMR 2350808 EDCB	Standard Cubic Cooler	875.10
S226	N/A	RCMR 3350608 EDCB	Standard Cubic Cooler	1105.89
S227	N/A	RCMR 4350608 ED CB	Standard Cubic Cooler	1366.02
S205	N/A	RCMR 2350406 CB	Standard Cubic Cooler	632.32
S206	N/A	RCMR 2350806 CB	Standard Cubic Cooler	803.07
S207	N/A	RCMR 3350606 CB	Standard Cubic Cooler	1029.85
S208	N/A	RCMR 4350606 CB	Standard Cubic Cooler	1260.63
S209	N/A	RCMR 1350608 CB	Standard Cubic Cooler	509.59
S210	N/A	RCMR 2350408 CB	Standard Cubic Cooler	638.99
S211	N/A	RCMR 2350808 CB	Standard Cubic Cooler	800.40
S212	N/A	RCMR 3350608 CB	Standard Cubic Cooler	1024.51
S213	N/A	RCMR 4350608 CB	Standard Cubic Cooler	1263.30
S214	N/A	RCMR 1350604 EDCB	Standard Cubic Cooler	598.97
S215	N/A	RCMR 2350404 EDCB	Standard Cubic Cooler	719.03
S216	N/A	RCMR 2350804 EDCB	Standard Cubic Cooler	919.13
S217	N/A	RCMR 3350604 EDCB	Standard Cubic Cooler	1144.57
S218	N/A	RCMR 4350604 EDCB	Standard Cubic Cooler	1454.06
S219	N/A	RCMR 1350606 EDCB	Standard Cubic Cooler	574.95
S220	N/A	RCMR 2350406 EDCB	Standard Cubic Cooler	700.35
S221	N/A	RCMR 2350806 EDCB	Standard Cubic Cooler	883.11
S222	N/A	RCMR 3350606 EDCB	Standard Cubic Cooler	1112.56

RCB Cubic Cooler 2,950 to 59,800w

S230	2100500	RCB1500606 CB	IND. Cubic Cooler	£ 1316.66
S231	2100501	RCB2500606CB	IND. Cubic Cooler	2030.35
S232	2100502	RCB3500606CB	IND. Cubic Cooler	2914.79
S233	2100503	RCB4500606CB	IND. Cubic Cooler	3900.62
S234	2100504	RCB1500806CB	IND. Cubic Cooler	1428.71
S235	2100505	RCB2500806CB	IND. Cubic Cooler	2213.11
S236	2100506	RCB3500806CB	IND. Cubic Cooler	3193.60
S237	2100507	RCB4500806CB	IND. Cubic Cooler	4288.81
S238	2100508	RCB1500610CB	IND. Cubic Cooler	1289.98
S239	2100509	RCB2500610CB	IND. Cubic Cooler	1974.32
S240	2100510	RCB3500610CB	IND. Cubic Cooler	2832.08
S241	2100511	RCB4500610CB	IND. Cubic Cooler	3792.56
S242	2100512	RCB1500810CB	IND. Cubic Cooler	1395.36
S243	2100513	RCB2500810CB	IND. Cubic Cooler	2141.07
S244	2100514	RCB3500810CB	IND. Cubic Cooler	3085.54
S245	2100515	RCB4500810CB	IND. Cubic Cooler	4144.74
S246	2100516	RCB1500606EDCB	IND. Cubic Cooler	1475.40
S247	2100517	RCB2500606EDCB	IND. Cubic Cooler	2282.47
S250	2100518	RCB3500606EDCB	IND. Cubic Cooler	3253.63

JE Hall Fusion Condensing Units



Medium Temperature Reciprocating

Code	Model	Duty -5/32	ECA	Series/Version	Net Price
J220	JEHR-0050-B1-M-1 NEW	1.12		1-V3	£ 540.02
J221	JEHR-0067-B1-M-1 NEW	1.50		1-V3	583.42
J222	JEHR-0100-B1-M-1 NEW	1.76		1-V3	615.04
J223	JEHR-0113-B1-M-1 NEW	2.14		1-V3	686.34
J224	JEHR-0140-B2-M-1 NEW	2.76		2/V3	824.60
J225	JEHR-0140-B2-M-3 NEW	2.76		2/V3	824.60
J226	JEHR-0150-B2-M-1 NEW	2.96		2/V3	902.72
J227	JEHR-0150-B2-M-3 NEW	2.96		2/V3	902.72
JC018	JEH2-0400-M3	8.10		3/V2	1329.90
JC019	JEH2-0500-M3	9.80		4/V2	1366.95
JC022	JEH2-0825-M3	13.37		4/V2	2273.70
JC023	JEH2-1000-M3	15.95		4/V2	2543.45

Medium Temperature Scroll

Code	Model	Duty -5/32	ECA	Series/Version	Net Price
J228	JEHS-0200-B2-M-1 NEW	4.19	ECA		£ 1024.24
J229	JEHS-0200-B2-M-3 NEW	4.19	ECA	2/V3	1024.24
J230	JEHS-0250-B2-M-1 NEW	5.02	ECA	2/V3	1059.58
J231	JEHS-0250-B2-M-3 NEW	5.02	ECA	2/V3	1059.58
J232	JEHS-0300-B2-M-1 NEW	5.80	ECA	2/V3	1104.84
J233	JEHS-0300-B2-M-3 NEW	5.80	ECA	2/V3	1104.84
J234	JEHS-0350-B2-M-1	6.44		2/V3	1216.44
J235	JEHS-0350-B2-M-3	6.44		2/V3	1216.14
JC106	JEHS-0350-M1	7.10	ECA	3/V2	1422.20
JC107	JEHS-0350-M3	7.10	ECA	3/V2	1372.80
JC108	JEHS-0400-M1	8.04	ECA	3/V2	1496.95
JC109	JEHS-0400-M3	8.04	ECA	3/V2	1465.75
JC110	JEHS-0500-M3	9.65	ECA	3/V2	1508.65
JC111	JEHS-0600-M3	10.90	ECA	3/V2	1566.50
JC112	JEHS-0680-M3	11.65	ECA	3/V2	1626.95
JC113	JEHS-0800-M3	14.35	ECA	4/V2	2754.70
JC114	JEHS-1000-M3	16.55		4/V2	2986.75

Low Temperature Reciprocating

Code	Model	Duty -5/32	Series/Version	Net Price
JC050	JEH2-0075-L-1	0.56	1/V2	£ 604.96
JC051	JEH2-0175-L-1	1.28	1/V2	1034.40
JC053	JEH2-0225-L-1	2.04	1/V2	1077.00
JC054	JEH2-0225-L-3	2.04	1/V2	1077.00
JC055	JEH2-0350-L-3	2.57	3/V2	1165.80
JC056	JEH2-0400-L-3	3.76	3/V2	1322.40
JC057	JEH2-0725-L-3	5.55	4/V2	2337.60
JC058	JEH2-0825-L-3	7.51	4/V2	2408.40

Low Temperature Scroll

Code	Model	Duty -5/32	Series/Version	Net Price
JC150	JEHS-0200-L-3	1.56	2/V2	£ 1501.80
JC151	JEHS-0300-L-3	2.04	2/V2	1618.20
JC152	JEHS-0400-L-3	3.10	3/V2	1846.20
JC153	JEHS-0500-L-3	3.75	3/V2	1903.80
JC154	JEHS-0600-L-3	4.40	3/V2	2093.40
JC155	JEHS-0750-L-3	5.35	4/V2	3089.40
JC156	JEHS-1000-L-3	7.20	4/V2	3275.40

ECA. End users are eligible for 100% tax deductible benefits. Ask for further details.

* R404A, Suction gas superheat 10K, Sub-cooling 0K
All models are Eco Design compliant





Scroll Condensing Units

Medium Temp Copeland

Code	Model 1 Phase	Approx HP	Type	Net Price
JC300	NF200DGM 1 Phase	2	Scroll Type	£ 904.50
JC302	NF250DGM 1 Phase	2.5		920.35
JC304	NF300DGM 1 Phase	3		954.48
JC306	NF350DGM 1 Phase	3.5		1011.77
3 Phase				
JC301	NF200SGM 3 Phase	2	Scroll Type	£ 920.35
I682	NF250SGM 3 Phase	2.5		947.16
I683	NF300SGM 3 Phase	3		981.30
I684	NF350SGM 3 Phase	3.5		1037.37
I685	NF400SGM 3 Phase	4		1045.90
I686	NF500SGM 3 Phase	5		1260.45
I687	NF600SGM 3 Phase	6		1362.84



Scroll Condensing Units

Low Temp Copeland

Code	Model	Approx HP	Type	Net Price
JC330	NF300SGL ZF 3 Phase	3	Scroll Type	£ 1902.86
JC331	NF400SGL ZF 3 Phase	4		2016.23
JC332	NF500SGL ZF 3 Phase	5		2124.72
JC333	NF600SGL ZF 3 Phase	6		2166.16

Rotary Condensing Units

Multi Temp

Code	Model	Approx HP	Type	Net Price
JC315	NFR075DL 1Phase	0.75	Rotary Type	£ 520.51
JC316	NFR100DL 1Phase	1		535.14
JC317	NFR150DL 1Phase	1.5		568.05
JC318	NFR200DL 1Phase	2		615.60
JC319	NFR250DL 1Phase	2.5		660.70
JC3190	NFR300DL 1Phase	3		808.20

Piston Condensing Units

Medium Temp

Code	Model	Approx HP	Type	Net Price
L'Unite Compressor				
JC320	NFP075DGM 1 Phase	0.75	Piston Type	£ 602.19
JC321	NFP100DGM 1 Phase	1		648.51
JC322	NFP150DGM 1 Phase	1.5		668.02
Kirby Compressor				
JC3220	NFK075DGM 1 Phase	0.75		£ 547.33
JC3221	NFK100DGM 1 Phase	1		550.98
JC3222	NFK150DGM 1 Phase	1.5		614.38
JC3223	NFK200DGM 1 Phase	2		777.72
JC3224	NFK250DGM 1 Phase	2.5		832.58
JC3225	NFK300DGM 1 Phase	3		838.67

Piston Condensing Units

Low Temp

Code	Model	Approx HP	Type	Net Price
L'Unite Compressor				
JC323	NFP075DGL 1 Phase	0.75	Piston Type	£ 661.92
JC324	NFP100DGL 1 Phase	1		668.02
JC325	NFP150DGL 1 Phase	1.5		710.68
JC327	FSP/0170-ME-HZ 1 Phase	2		1153.17
JC328	FSP/0270-ME-HZ 1 Phase	2		1212.91
JC3280	FSP/0270-TE-HZ 3 Phase	2		
JC329	FSP/0360-TE-HZ 3 Phase	3		1368.94
JC3290	FSP/0475-TE-HZ 3 Phase	4		1556.66
Kirby Compressor				
JC326	NFK075DGL 1 Phase	0.75		£ 550.98
JC3260	NFK100DGL 1 Phase	1		616.81
JC3261	NFK150DGL 1 Phase	1.5		643.63
JC3262	NFK200DGL 1 Phase	2		869.15



Box Evaporator (Medium Temp) Fitted With Heaters & Expansion Valve

Code	Model	Capacity (W)	Cold Room Temp.0°C/7KD	Net Price
S010	LFJ5.6/1.5M	1500		£ 330.50
S011	LFJ7.5/2.0M	2000		340.10
S0110	LFJ8.2/2.4M	2400		344.98
S012	LFJ11/2.8M	2800		352.29
S013	LFJ12/3.2M	3200		425.43
S014	LFJ14/3.6M	3600		438.84
S015	LFJ18/4.6M	4600		485.16
S016	LFJ20/5.4M	5400		643.63
S017	LFJ26/6.8M	6800		678.98
S018	LFJ28/7.8M	7800		787.47
S019	LFJ35/9.0M	9000		791.13



Box Evaporator (Low Temp) Fitted With Heaters & Expansion Valve

Code	Model	Capacity (W)	Cold Room 18.0°C/7KD	Net Price
S050	LFJ3.5/1.0L	1000		£ 298.66
S051	LFJ5.0/1.3L	1300		318.16
S052	LFJ7.0/1.8L	1800		371.80
S053	LFJ9.0/2.4L	2400		422.99
S054	LFJ12/3.2L	3200		437.62
S055	LFJ14/3.8L	3800		552.21
S056	LFJ17/4.4L	4400		594.87
S057	LFJ19/5.0L	5000		714.33
S058	LFJ23/5.9L	5900		770.41

Panel Evaporator (Medium Temp) Fitted With Heaters & Expansion Valve

Code	Model	Capacity (W)	EVAP. TEMP. -6oC/7KTD	Net Price
S059	LFJX6.3/1.25M	1025		£ 309.63
S060	LFJX7.6/1.5M	1500		324.25
S061	LFJX9.7/1.9M	1900		352.29
S062	LFJX12/2.3M	2300		371.80
S063	LFJX16/3.0M	3000		446.15

Panel Evaporator (Low Temp) Fitted With Heaters & Expansion Valve

Code	Model	Capacity (W)	Net Price
S064	LFJX4.8/0.95L	950	£ 303.53
S065	LFJX6.1/1.2L	1200	342.54
S066	LFJX7.3/1.5L	1500	359.61
S067	LFJX9.8/2.0L	2000	429.09



Eliwell Control Panel

Complete management of static or ventilated cold rooms
The Coldface EWRC 300/500LX series manages the temperature control of a static or ventilated cold room



L254	Eliwell Coldface EWRC 500 NT	£ 112.15
L252	Pego Expert ECP200 Expert	117.65

Eliwell versions with 3 and 5 configurable relays (e.g. lights, alarms, condensation fans), 4 low-voltage digital inputs configurable for door microswitches or other devices. Models are available with real-time defrost clock, HACCP function with annual calendar and connectivity with Televis and Modbus systems via optional plug-in module. The box allows the installation of power contactors or magneto-thermal switches on a DIN rail. PTC and NTC sensor management, with the consequent elimination of costs deriving from the replacement of probes in the field.



Quick Selection Chart for Complete Packaged System
Chiller Room (-2°C ~ +2°C)



Approx. Room Volume (m3)	Controller Model 2 x 6m Probe	Condensing Unit Model	Cooler Model (incl Control Panel)	Approx. Room Volume (m3)	Net Price
Rotary Condensing Unit + Box Evaporator + Control Panel - Max. Length 12mtrs					
JC500	Eliwell Coldface	NFR075DL	LFJ7.5/2.0M	14	£ 958.00
JC502	Eliwell Coldface	NFR100DL	LFJ7.5/2.0M	20	975.00
JC504	Eliwell Coldface	NFR150DL	LFJ11/2.8M	23	1019.00
JC506	Eliwell Coldface	NFR200DL	LFJ14/3.6M	30	1152.00
JC507	Eliwell Coldface	NFR250DL	LFJ18/4.6M	42	1244.00
JC508	Eliwell Coldface	NFR300DL	LFJ20/5.4M	57	1549.00

Rotary Condensing Unit + Panel Evaporator + Control Panel - Max. Length 12mtrs					
JC5000	Eliwell Coldface	NFR075DL	LFJX9.7/1.9M	14	£ 970.00
JC5020	Eliwell Coldface	NFR100DL	LFJX12/2.3M	20	1005.00
JC5040	Eliwell Coldface	NFR150DL	LFJX16/3.0M	23	1112.00

Piston Condensing Unit + Box Evaporator + Control Panel - Max. Length 25mtrs					
JC501	Eliwell Coldface	NFP075DGM	LFJ7.5/2.0M	14	£ 1040.00
JC503	Eliwell Coldface	NFP100DGM	LFJ7.5/2.0M	20	1086.00
JC505	Eliwell Coldface	NFP150DGM	LFJ11/2.8M	23	1118.00
JC508	Eliwell Coldface	NFK200DGM	LFJ14/3.6M	30	1315.00
JC5080	Eliwell Coldface	NFK250DGM	LFJ18/4.6M	42	1415.00
JC5081	Eliwell Coldface	NFK300DGM	LFJ20/5.4M	57	1580.00

Piston Condensing Unit + Panel Evaporator + Control Panel - Max. Length 25mtrs					
JC540	Eliwell Coldface	NFP075DGM	LFJX9.7/1.9M	14	£ 1052.00
JC541	Eliwell Coldface	NFP100DGM	LFJX12/2.3M	20	1118.00
JC542	Eliwell Coldface	NFP150DGM	LFJX16/3.0M	23	1212.00

Scroll Condensing Unit + Box Evaporator + Control Panel - Max. Length 35mtrs					
JC509	Eliwell Coldface	NF200DGM 1PH	LFJ14/3.6M	30	£ 1441.00
JC510	Eliwell Coldface	NF200SGM 3PH	LFJ14/3.6M	30	1458.00
JC511	Eliwell Coldface	NF250DGM 1PH	LFJ18/4.6M	42	1503.00
JC512	Eliwell Coldface	NF250SGM 3PH	LFJ18/4.6M	42	1530.00
JC513	Eliwell Coldface	NF300DGM 1PH	LFJ20/5.4M	57	1695.00
JC514	Eliwell Coldface	NF300SGM 3PH	LFJ20/5.4M	57	1722.00
JC515	Eliwell Coldface	NF350DGM 1 PH	LFJ26/6.8M	70	1788.00
JC516	Eliwell Coldface	NF350SGM 3PH	LFJ26/6.8M	70	1815.00
JC518	Eliwell Coldface	NF400SGM 3PH	LFJ28/7.8M	85	1931.00
JC5190	Eliwell Coldface	NF500SGM 3PH	LFJ35/9.0M	95	2149.00

System Includes
Control Panel + Evaporator + Condensing Unit



Ambient Room Temperature 27°C
Insulation 75mm Polyurethane (Sides, Walls & Floors)
Product Load Based on 64kg/m3 Entering no more than 4°C above Room Temperature
Product SP. HT. 3.14kj/kg/k (TEV Model - Danfoss TES-2)
Ambient Temperature to Condensor 32°C

Quick Selection Chart for Complete Packaged System
Freezer Room (-20°C) R404A



Code	Controller Model 2 x 6m Probe	Condensing Unit Model	Cooler Model (incl Control Panel)	Approx. Room Volume (m3)	Net Price
Rotary Condensing Unit + Box Evaporator + Control Panel - Max. Length 12mtrs					
JC520	Eliwell Coldface	NFR075DL	LFJ3.5/1.0L	2	£ 918.00
JC522	Eliwell Coldface	NFR100DL	LFJ3.5/1.0L	3	932.00
JC524	Eliwell Coldface	NFR150DL	LFJ5.0/1.3L	4	951.00
JC526	Eliwell Coldface	NFR200DL	LFJ7.0/1.8L	7	1085.00
JC527	Eliwell Coldface	NFR250DL	LFJ7.0/1.8L	10	1130.00
JC5270	Eliwell Coldface	NFR300DL	LFJ9.0/2.4L	16	1329.00

Rotary Condensing Unit + Panel Evaporator + Control Panel - Max. Length 12mtrs					
JC5200	Eliwell Coldface	NFR075DL	LFJX4.8/0.95L	2	£ 922.00
JC5220	Eliwell Coldface	NFR100DL	LFJX6.1/1.2L	3	975.00
JC5240	Eliwell Coldface	NFR150DL	LFJX7.3/1.5L	4	992.00
JC5260	Eliwell Coldface	NFR200DL	LFJX9.8/2.0L	7	1142.00
JC5270	Eliwell Coldface	NFR250DL	LFJX9.8/2.0L	10	1187.00

Piston Condensing Unit + Box Evaporator + Control Panel - Max. Length 25mtrs					
JC521	Eliwell Coldface	NFP075DGL	LFJ3.5/1.0L	2	£ 1058.00
JC523	Eliwell Coldface	NFP100DGL	LFJ3.5/1.0L	3	1064.00
JC525	Eliwell Coldface	NFP150DGL	LFJ5.0/1.3L	4	1126.00
JC5250	Eliwell Coldface	NFK200DGL	LFJ7.0/1.8L	8	1398.00
JC5251	Eliwell Coldface	FSP/0170-HZ	LFJ9.0/2.4L	16	1675.00
JC5252	Eliwell Coldface	FSP/0270-HZ	LFJ12/3.2L	28	1721.00
JC5253	Eliwell Coldface	FSP/0360-HZ	LFJ17/4.4L	45	2061.00
JC5254	Eliwell Coldface	FSP/0475-HZ	LFJ19/5.0L	60	2369.00

Piston Condensing Unit + Panel Evaporator + Control Panel - Max. Length 25mtrs					
JC545	Eliwell Coldface	NFP075DGL	LFJX4.8/0.95L	2	£ 1063.00
JC546	Eliwell Coldface	NFP100DGL	LFJX6.1/1.2L	3	1108.00
JC547	Eliwell Coldface	NFP150DGL	LFJX7.3/1.5L	4	1168.00
JC548	Eliwell Coldface	NFP200DGL	LFJX9.8/2.0L	8	1455.00

Scroll Condensing Unit + Box Evaporator + Control Panel - Max. Length 35mtrs					
JC535	Eliwell Coldface	NF400SGL 3PH	LFJ17/4.4L	45	£ 2709.00
JC536	Eliwell Coldface	NF500SGL 3PH	LFJ19/5.0L	60	2938.00
JC537	Eliwell Coldface	NF600SGL 3PH	LFJ23/5.9L	70	3035.00

System Includes
Control Panel + Evaporator + Condensing Unit



Maxkold Condensing Units and Refrigeration products are of the highest quality and also come with a 12 month manufacturers warranty. The main components inside these units are Copeland, Unite Hermetique, Danfoss, ABB and Siemens, and are of US and EU origin. This means you can buy Maxkold with confidence.

Tube Cutters

Code	Model	To suit tube sizes	Net Price
Q001	Rothenberger Rotrac 28 Plus Chrome	1/4 to 1-3/8"	£ 30.55
Q003	Imperial TC 1550 Hi Duty	1/8 to 1-1/8"	20.61
Q004	Rothenberger Minicut No.2 Pro Tube	1/8 to 7/8"	14.29
Q005	Imperial TC1050 Mini Tube Cutter	1/8 to 5/8"	11.30
Q002	Imperial 174FC Big Imp Tube Cutter	3/8 to 1-1/8"	20.49
Q007	Imperial TC1000 Tube Cutter	1/8 to 1-1/8"	22.69
Q008	Imperial 206FB Adj-O-Matic	3/8 to 2-5/8"	48.66

Capillary Tube Cutter

Q014	Imperial CTC Cutter		£ 8.95
------	---------------------	--	--------

ROTHENBERGER



Flare Kits

Code	Model	To suit tube sizes	Net Price
Q015	Imperial 195FC Flare Kit	3/16 to 5/8"	£ 34.22
Q016	Imperial 500FC Rol-Air	3/16 to 5/8"	51.26
Q018	Imperial 375FS Flare Kit	1/8 to 3/4"	62.52
Q020	Imperial 275FS Flare Kit 45 deg	1/8 to 3/4"	83.10
Q022	Rothenberger Eccentric Flaring Kit R410A c/w flare tool and carry case		99.95

Flare-Swage Kit

Q020	Imperial 275FS Kit with Case	1/8 to 3/4"	£ 85.40
------	------------------------------	-------------	---------

Imperial Swaging Punches

Code	Model	To suit tube sizes	Net Price
Q025	93S 03	3/16"	£4.45
Q026	93S 04	1/4	4.68
Q027	93S 05	5/16	5.17
Q028	93S 06	3/8	5.53
Q029	93S 08	1/2	5.99
Q030	93S 10	5/8	7.34
Q031	93S 12	3/4	7.70
Q032	93S 14	7/8	7.85
Q033	CH-193 – Set of Five	1/4, 5/16, 3/8, 1/2, 5/8	22.95

Imperial Spares

Code	Model	To suit	Net Price
Q010	32633 Wheel	TC1050/227	£ 7.07
Q011	75015 Wheel	TC1000/312	5.28
Q012	74761 Wheel	206	5.62
Q100	26883 Screw	TC1050/227	P.O.A.
Q101	74762 Screw	TC1000/312	P.O.A.
Q102	75531 Bar	195FC	P.O.A.
Q103	75534 Yoke	195FC	P.O.A.
Q104	278-FS-03-04-06 Swage	275FS	P.O.A.
Q105	278-FS-08 Swage	275FS	P.O.A.
Q106	278-FS-10 Swage	275FS	P.O.A.
Q107	278-FS-12 Swage	275FS	P.O.A.
Q108	38600 Flare Cone	275FS	P.O.A.
Q109	38766 1/8 to 7/16 Flare Bar	275FS	P.O.A.
Q110	38767 1/2 to 3/4 Flare Bar	275FS	P.O.A.
Q111	7885801 Yoke	275FS	P.O.A.



Imperial

Tube Benders

Bending Springs-Imperial

Code	Model	Size	Net Price
Q035	102-F-04	1/4"	£ 3.28
Q036	102-F-06	3/8	3.89
Q037	102-F-08	1/2	4.30
Q038	102-F-10	5/8	4.44
Q039	102-F-12	3/4	5.32
Q040	102-F-14	7/8	6.18

Q042	9881635	7 piece Set - 1/4, 5/16, 3/8, 7/16, 1/2, 5/8, 3/4"	£ 29.39
------	---------	--	---------

Imperial



Combination Benders-Imperial

Q070	368FH	1/4 - 5/16 - 3/8"	Net Price £ 22.83
------	-------	-------------------	----------------------

Hand Benders-Imperial

Code	Model	Size	Net Price
Q080	364 FHB-08	1/2"	£ 80.55
Q081	364 FHA-10	5/8	94.89
Q082	364 FHA-12	3/4	141.88
Q083	364 FHA-14	7/8	195.00

Hand Benders-Rothenberger

Q090	Maxi Bender 23022	3/8-1/2-5/8-3/4-7/8"	Net Price £ 199.54
------	-------------------	----------------------	-----------------------

Gear Benders-Imperial

Q084	270-F-12	3/4"	Gear Bender	£ 176.38
Q085	270-F-14	7/8"	Gear Bender	167.95
Q086	270-F-18	1-1/8"	Gear Bender	199.95

Hydraulic Benders

Q088	HB-451	Hydraulic Bender	Net Price £ 266.80
------	--------	------------------	-----------------------

Reamer

Code	Model	Net Price
Q013	Imperial 208 Inner and Outer Reamer	£ 16.22
Q139	Imperial 210-F Reamer c/w Two Blades	13.10



Valve Keys

Code	Model	To Suit	Net Price
Q116	RW 123	3/16" - 1/4" square	£ 14.51
Q118	RW 122	1/2" - 9/16" AF	10.53
Q141	RW 127	3/16" - 1/4" square	11.06
		5/16" - 3/8" square	
		5/16" - 3/8" square	
		1/4" - 3/8" square	



Ratchet Tool

Code	Model	Net Price
Q125	MV-3816	7 in 1 Ratchet Tool £ 7.85



Pinch Off Tool

Code	Model	To Suit	Net Price
Q055	VG-10 Lock-grips	(3/16 to 3/8)	£ 30.62
Q058	VG-121NG Spare Needle and Gasket		9.52



Piercing Pliers

Line piercing pliers for refrigerant recovery.

Code	Model	Net Price
Q050	PT-109 Piercing Tool	£33.64
Q051	Replacement Needle and Gasket	7.89



Torque Wrench Sets

Code	Model	Net Price
Q168	TW-8 Torque Wrench Set	£ 49.90
Q169	Rotorque Torque Wrench 00224	88.81
Q170	Torque Wrench Set R175001	62.19

Rotorque is a Patented rack and pinion drive enables quick and reliable fastening of flare nuts sizes 15 - 32 mm in accordance with EN 378-2:2008-06



Multi Fin Comb

Code	Model	Net Price
Q120	Multi Fin Comb	£ 5.84
Q121	Coil Fin Brush	3.56



Strippers & Crimping Tool

Code	Model	Description	Net Price
L580	IE-110	5-in-1 Combination Tool	£ 17.85



Drills and Screwdriver Bits

Code	Model	Description	Net Price
Q728	Bosch GBH2-24D SDS Hammer Drill 110V 700 Watt w/Carry Case		£ 99.95
Q729	Bosch GBH2-24D SDS Hammer Drill 240V 700 Watt w/Carry Case		99.95
Q730	Makita 14.4V Mobile Driver Drill inc 2 x 1.3Ah Nicad Batteries		54.79
Q731	Makita DLX2012X2 18V Twin Kit Impact Driver & Combi Drill 2 x 18v 3.0Ah Li-ion Batteries Carry Case		226.44



Bi-Torsion Extra Hard Gold Screwdriver Bits

Code	Model	Description	Net Price
Q732	Pozi 1 Extra Hard Gold Box Qty 10		£ 20.56
Q733	Pozi 2 Extra Hard Gold Box Qty 10		20.56
Q734	Pozi 3 Extra Hard Gold Box Qty 10		20.56
Q735	Extra Hard Gold Screwdriver Bits 7 Piece Set		14.95
Q736	Phillips PH2 x 25mm Box 25		5.97
Q737	Phillips PH2 x 50mm Box 10		5.97
Q740	Dewalt PZ2 Impact Driver Bits 25mm Box 25		10.45



Tube Expander Kits

Code	Model	Net Price
Q179	12318 Kit in carrying case c/w 6 heads - 3/8, 1/2, 5/8, 3/4, 7/8 and 1-1/8	£ 279.00
Q170	3/8" O.D. Head to suit	86.36
Q171	1/2" O.D. Head to suit	86.36
Q172	5/8" O.D. Head to suit	86.36
Q173	3/4" O.D. Head to suit	86.36
Q174	7/8" O.D. Head to suit	86.36
Q175	1-1/8" O.D. Head to suit	118.75
Q176	1-3/8" O.D. Head to suit	118.75
Q177	1-5/8" O.D. Head to suit	118.75



Inspection Mirror

Code	Model	Dia. of mirror	Extension	Net Price
Q730	MIR-2	2"	8-1/2" to 18"	£ 9.15



Hex Key Set

Code	Model	Net Price
Q460	10 Piece Metric Hex Key Set - Ball End	14.43
Q461	10 Piece AF Hex Key Set - Ball End	14.43



Saws & Blades

Code	Type	Net Price
Q433	Rothenberger Hardpoint Saw 22" (8ppi)	£ 10.84
Q436	Rothenberger Heavy Duty 12" Hacksaw	17.50
Q437	Rothenberger 12" Bi-Metal Hacksaw Blades 24TPI Each	2.43
Q434	Junior Hacksaw	3.25
Q435	Junior Hacksaw Blades Pack 10	2.69
Q433	Rothenberger Hardpoint Saw 22" (8ppi)	10.84



Screwdrivers

Code	Type	Net Price
Q405	Rothenberger Insulated Screwdriver Set 7 piece	£ 38.91
Q406	Rothenberger 6pce Euroline Screwdriver Set	28.97
Q407	Rothenberger Mains Testing Screwdriver	2.65
Q408	Rothenberger Long Reach Screwdrivers 2 piece	5.85



Wrenches

Code	Model	Net Price
Q705	Rothenberger 6" x 34mm Adj Wide Jaw Wrench	£ 16.28
Q706	Rothenberger 8" x 38mm Adj Wide Jaw Wrench	18.99
Q707	Rothenberger 6" x 50mm Adj Wide Jaw Wrench	21.45
Q718	Rothenberger Water Pump Pliers Set 3	49.95
Q708	Rothenberger 6" Adjustable Chrome Wrench	13.74
Q709	Rothenberger 8" Adjustable Chrome Wrench	16.37
Q710	Rothenberger 10" Adjustable Chrome Wrench	19.95
Q711	Rothenberger 12" Adjustable Chrome Wrench	24.68
Q712	Rothenberger 15" Adjustable Chrome Wrench	49.39



Precise operation: Smooth-running and robust roller with minimum play in the sliding guides. Chrome Vanadium with Steel/Chrome plated finish

Torches

Code	Model	Net Price
Q514	LED P4 Professional Pen Torch 88922	£ 16.95
Q515	LED Head Torch 88926	16.99



Manifolds

Code	Model	Net Price
Q230	Rothenberger 2 Way Manifold R22 R404A, R407C R134a Sight Glass 170501	£ 68.05
Q231	Rothenberger 2 Way Manifold R410A Sight Glass 170518	68.05
Q232A	Rothenberger 2 Way Manifold Set (incl. Set of 3 Hoses) + Carry Case R22 R404A, R407C R134a 170600	132.99
Q236	Rothenberger 2 Way Manifold Set (incl. Set of 3 Hoses) + Carry Case R410A 170607	147.56
Q233	Rothenberger 4 Way Manifold Set (incl. Set of 3 Hoses) + Carry Case R22 R404A, R407C R134a 170602	168.95
Q233A	Rothenberger 4 Way Manifold Set (incl. Set of 3 Hoses) + Carry Case R410A 170608	177.20
Q350	ROCOOL 600 Digital Manifold + 1 Temp Clamp	346.00

ROTHENBERGER



Code	Model	Net Price
Q232	660-CB Four Way Manifold Imperial 600 Series 4 Valve Manifold. Bar/°C with scales for R134a, R404A, R407C	69.95
Q234	640-CB Four Way Manifold Imperial 600 Series 4 Valve Manifold Bar/°C with scales for R410A	69.95
Q330	566-CC Imperial 5 Ports with Sight Glass Manifold L22/407C/410A (inc. 5 x 36" hoses) 5 ports with sight glass	129.95
Q331	626-CSC Imperial 4 Valve Manifold for R-404, R-407C & R-134A (inc. 5 x 36" hoses)	133.50
Q340	745-CBC Two Way Manifold Imperial 700 Series Kwik Charge Manifold that read Bar/PSI/°C with scales for R410A Only	89.95
Q349	740-CBC Two Way Manifold IMPERIAL 700 Series Kwik Charge Manifold . Reads Bar/PSI/°C with scales for R134a, R404A, R407C.	95.75
Q4320	Imperial iManifold™ Wireless Digital Manifold	933.00
Q4321	Imperial iManifold™ Wireless Digital Manifold with Tablet	2534.00

Imperial



Vacuum Gauges

Code	Model	Net Price
Q277	Wigam Analogue Vacuum Gauge 0-1000mb	48.12
Q278	Robinair RA VG-1 Digital Micron Gauge SO40049	195.00
Q279	VG64 Electronic Vacuum Gauge	146.65

ROBINAIR
AN SPX BRAND



Standard Charging Lines

Code	Model	Colour	Net Price
72" Hose Set			
Q364	1/4" Imperial Hose Set 3	Red-Yellow-Blue	£ 42.30
Q365	5/16" Imperial Hose Set 3	Red-Yellow-Blue	42.29
1/4" x 72" Individual Lines			
Q368	72-4-B	Blue	15.39
Q369	72-4-R	Red	15.39
Q370	72-4-Y	Yellow	15.39
1/4" x 120" Individual Lines			
Q371	120-4-B	Blue Line	26.03
Q372	120-4-R	Red	26.03
Q373	120-4-Y	Yellow	26.03
Set of 3 x 36" x 1/4"			
Q374	SET-36-4	Red-Yellow-Blue	24.95
Set of 3 x 72" x 1/4"			
Q375	5/16" Javac Hose Set 3	Red-Yellow-Blue	29.22
R410A 1/2" (20 UNF) x 60"			
Q396	60-B	Blue Line	12.27
Q397	60-R	Red	12.27
High Pressure Charging Line			
Q305	Vac HP Charging Line	Yellow	20.41

Imperial



Charging Lines Standard or with Ball Valves

Code	Model	Colour RYB	Net Price
Q394	R171517	Set of 3 1500mm Lines with Shut Off Valves 1/4" R404A R134A R407C	£ 69.95
Q3940	R171520	Set of 3 1500mm Lines with Shut Off Valves R410A 5/16"	69.95
Q395	R171512	Std Set of 3 1500mm Lines 1/4" R404A R134A R407C	35.89
Q3950	R171534	Std Set of 3 1500mm Lines 5/16" R4410A	35.89

ROTHENBERGER



Charging Line Spares

Code	Description	Net Price
Q378	6 Gaskets/3 Lifters for Standard Lines	£ 6.77
Q377	R1700RD Hose Adaptor 1/4" SAE M to 5/16" SAE F	10.05
Q381	170016 Hose Adaptor 1/4" SAE F to 5/16" SAE M	9.92
Q386	26C Straight Quick Coupler. Converts 1/4" Lines to R410A	16.91
Q387	27C Elbow Quick Coupler. 5/16" R410A	18.25
Q388	16C Quick Coupler 1/4" Straight	11.93
Q389	17C Quick Coupler 1/4" Angled	14.99



Robinair Vacuum Pumps

The following Vacu-Master Vacuum Pumps from Robinair are 240v only and offer a high performance at a very competitive price.

ROBINAIR

Single Stage - 240 Volt

Code	Model	Swept Volume	Supply	Weight	Net Price
Q243	15301	71 l/min (3.0 cfm)	240v	10.0 kgs	£ 174.95



Two Stage Dual Wired Pumps

A quality Dual Voltage Robinair Vacuum Pump, that you can alter the wiring to suit either 110 or 240 Volt.

Two Stage Dual Voltage - Switchable 110/240 Volt

Code	Model	Swept Volume	Supply	Weight	Net Price
Q247	15401	112 l/min (3.3 cfm)	110/230v	12.0 kgs	£ 346.47
Q248	15601	168 l/min (6.0 cfm)	110/230v	12.0 kgs	406.87



Rothenberger Vacuum Pump

Roair Dual Voltage with Switch 230v/110v

Code	Model	Swept Volume	Supply	Weight	Net Price
Q220	170062	85 l/min (3.0 cfm)	110/230v	10.7 kgs	£ 242.37
Q249	170063	170 l/min (6.0 cfm)	110/230v	11.5 kgs	269.95

Two-stage rotary vane pump for evacuation in accordance
For evacuation according to DIN 8975 with vacuum gauge and solenoid check valve

ROTHENBERGER
pipetool technologies at work



Vacuum Pump Oil

Specially formulate to improve cold start performance of most high vacuum pumps; chemically engineered to maintain viscosity at very high running temperatures

Code	Description	Net Price
Q202	1 Litre Vacuum Pump Oil	£ 7.89



Engineers Air Con Tool Kit

Code	Description	Net Price
Q287	Air-Con Tool Kit 3CFM	£ 971.00
Q288	Air-Con Tool Kit 6CFM	1029.00

SUPER EGO
A part of the ROTHENBERGER GROUP

Kit Includes:

- Vacuum Pump (3cfm or 6cfm)
- Recovery Unit
- 100Kg Scales
- Electronic Leak Detector
- 4-Way R410A Manifold Set
- Concentric Flaring Tool
- Digital Thermometer



TIF 9030 Electronic Charging Scales

Electronic Charging and Recovery Scales.
Clear LCD readout.
Battery powered. Approx. 60 hours battery life (PP3).
Supplied in a tough ABS plastic case.

TIF



Code	Model	Net Price
Q286	WS-120 Electronic Scales Max Cap 120kg	£ 137.40

Rothenberger

Electronic Charging and Recovery Scales.
Clear LCD readout. Battery powered 9V.

Supplied with laptop style carry case.

ROTHENBERGER
pipetool technologies at work



Code	Model	Net Price
Q285	173005 Roscale 120 Resolution 5g Suitable for all common refrigerant bottles	£ 199.43

Nitrogen Pressure Gauge

Code	Model	Net Price
Q842	259040 Nitrogen Pressure Gauge	£ 61.75

ROTHENBERGER
pipetool technologies at work



For the Refrigeration - Air Conditioning Engineer. Connects to Nitrogen Regulator via 1/4 " Refrigerant Hose. Allows user to accurately monitor system test pressures when carrying out repairs or installation.

Oxyturbo Maxymum High Pressure Regulator

Professional regulator for use with nitrogen or argon
Front adjustment. Side entry for nitrogen or argon cylinders.
63mm gauges to ISO 5171 with fitted protectors. Safety relief valve.
Made with advanced production technology from brass bar stock with quality manufactured components.
Maximum inlet pressure of 300 bar.

Supplied with a series of cascade outlet nipples with multiple connection possibilities including: G3/8 Rhe cone outlet according to UNI EN 560:2006; conversion outlet from cone G3/8 to SAE 1/4" (7/16" 20 UNF); conversion outlet from SAE 1/4" to SAE 5/16" (1/2" 20 UNF).

The Maxymum reduces and stabilises the pressure of the gas in the cylinder to a safe and/or usable level acceptable by your operating system. The pressure in the gas cylinder is easily increased and decreased by a simple turn of the pressure adjusting knob.

oxyturbo

Code	Model	Net Price
Q840	S100422 Maxymum Press Regulator	£ 139.00



Recovery Machines

Promax (Please specify Voltage 110 or 240v)

Code **Model**
Q500 Minimax Portable Recovery Machine 240 Volt
 Suitable for HFC, CFC and HCFC including R410A
 Voltage: 240 V or 110 V
 Dimensions H=343mm, W=229mm, L=483mm
 Ultimate vacuum 29 inHg
 High pressure cut out 550 psi / 38 bar
 Compressor 1/2 HP, direct drive, 1725 rpm
 Dimensions H = 343mm, W = 229mm, L = 483mm
 Weight of unit 14kg

Net Price
£ 762.00

PROMAX



Q499 RG 6-E Twin Cylinder Refrigerant Recovery Machine
 Suitable for HFC, CFC and HCFC including R410A

1055.00

Promax introduces the new and highly developed RG 6-E. This Promax model boasts a twin-cylinder design and spark-proof switches, which makes it suitable for recovering A2L mildly flammable refrigerants such as R32 and R1234YF. It also guarantees excellent recovery rates on CFC, HCFC, HFC refrigerants. It uses the proven Promax oil-less compressor design - which promotes faster recovery under all conditions. The new 1HP/735W motor performs better in all scenarios. All of these features are packaged in new moulded housing, ensuring that not only will the RG 6-E out-perform all competitors - it will also remain lightweight and compact.



Q502 RG3000 Portable Recovery Machine 240 Volt
 Suitable for HFC, CFC and HCFC including R410A
 Voltage: 240 V
 Recovery Rate: Liquid : upto 50 kgs/hr
 Vapour: upto 17 kgs/hr
 Push/Pull method Liquid: 240 kgs/hr

539.00

Dimensions: Height: 280 mm
 Width: 229 mm
 Depth: 432 mm
 Weight: 14 kgs



Rothenberger

Code **Model** **Net Price**
Q506 Rorec 168605 Compact Recovery Machine
 Capacity 373kg/hr push-pull Dual Voltage 110v/230v **£ 787.00**
Q507 Rorec Pro 168606 Compact Recovery Machine
 Capacity 436kg/hr push-pull Dual Voltage 110v/230v **958.00**

Net Price
£ 787.00

958.00

ROTHENBERGER
 pipetool technologies at work



Compact, portable device for recovery of halogenated refrigerants of every kind
 4-pole motor guarantees the durability of the machine
 Low noise and vibration emission thanks to the compact design
 Intuitive handling makes it simple and safe to use
 Maintenance-free operation through the oil-free compressor
 Emptying of the device in order to work with different refrigerants with the PURGE function
 Simple transport and use with the light and compact plastic casing

Leak Detector Spray

Ready for use, will locate the smallest leak in refrigerant, gas or compressed air systems.
 Operating range: LDS 0 Deg.C to +50 Deg.C
 LT45 -45 Deg.C to +50 Deg.C

advanced
 engineering

Code **Type** **Net Price**
Q191 Regin Premier Aerosol **£ 7.15**
M486 Advanced EasyFind Aerosol **£ 8.63**

Net Price
£ 7.15
£ 8.63



Leak Sealant

Code **Model** **Net Price**
M190 System Leak Sealant Kit up to 1.5 Tons (5kW) **£ 29.60**
M191 System Leak Sealant Kit up to 1.5-5 Tons (5-17kW) **£ 38.79**

Net Price
£ 29.60
£ 38.79



Electronic Leak Detectors

Code **Model** **Net Price**
Q495 RO-LEAK 87305 Electronic Leak Detection Kit **£ 184.75**

Net Price
£ 184.75

Durable and highly sensitive sensor tip with e leak detection rate of 3 g/a within 3 seconds
 Simple determination of the refrigerant concentration
 Adjustment of the sensor tips zero measurement point for simple detection of the leak
 Exact and quick locating of the leak. Easy accessibility of even hard to reach leaks

ROTHENBERGER
 pipetool technologies at work



Code **Model** **Net Price**
Q494 TIF XP1-1A Automatic Halogen Leak Detector **£ 137.40**

Net Price
£ 137.40

Sensitive to HFC, CFC and HCFC refrigerants. Super sensitive: leak rate 11 grams per year. High efficiency positive displacement pump
 Audible alarm and flashing LED. Carrying Case

Code **Model** **Net Price**
Q493 TIF 8900-E Combustible Gas Detector **£ 260.81**

Net Price
£ 260.81

Solid state sensor technology, long life and precision
 Broad band of combustible gas detection. Can be used to leak check refrigeration systems that use hydrocarbon combustible gases.
 Sensitivity as low as 5 ppm
 Classified intrinsically safe for use in flammable environments



TIF

UV-Fluorescent Leak Detectors

Finds refrigerant leaks undetectable by other methods.

Add fluorescent dye to the refrigeration system and allow to circulate. In the event of a leak, the dye escapes with the system's refrigerant and remains at all leak sites.

Scan the system with a Spectroline UV/Blue Inspection Lamp – the dye will fluoresce to pinpoint the exact source of the leak.

Code **Model**
Q552 Optimax Junior Complete Starter Kit
 Consists of:
 Cordless Lamp powered by 3 x AA batteries (included) will keep the high-intensity, 100,000-hour LED bulb at peak performance for over half a day's continuous use.
 EZ-Ject dye injector kit
 2 x EZ-4/ECS dye Cartridges
 Carrying case and sample of cleaner
 UVS-40 Spectacles

Q553 Optimax Pro-Complete Kit
 Consists of:
 14.5 volt U.V. Lamp capable of pinpointing the tiniest leaks up to 6M (20 ft) away.
 Big EZ injector kit
 BEZ-200/E Dye
 Carrying case and sample of cleaner.
 UVS-40 Spectacles



Net Price
£ 109.72



239.77



Dye Cartridges

Code **Model**
To suit - Optimax Junior Kit
Q554 EZ-4/E Cartridge treats upto 11.3 kg of refrigerant

Net Price
£ 16.77



Q554

To suit - Optimax Pro-Complete Kit
Code **Model**
Q550 BEZ-2/ECS Cartridge treats upto 70 kgs of refrigerant
Q551 BEZ-4/ECS Cartridge treats upto 180 kgs of refrigerant

Net Price
123.63
161.93

Accessories

Code **Model**
Q555 UVS-40 Spectacles

Net Price
£ 24.83



Glo Stick Capsules

The following Glo Stick Capsules are for use with Spectroline HVLD-80 and TLK100 Leak Detection Kits.

Glo Stick Capsules contain AR-GLO and eliminate the need for additive filling and venting. AR-GLO is proven safe and effective. It works in any size AC & R system and is compatible with all commonly used refrigerants and refrigerant blends employing mineral oil, ester oil, alkylbenzene or PAG lubricants.

Different size glo sticks are available for various refrigerant charges. Several sticks can be used for larger systems.

The ester glo sticks may be used in mineral or alkylbenzene oil systems and therefore are the most suitable for van stock.

Not Suitable for use with EZ-Ject or Big EZ-injection systems.

Mineral Oil

Code	Model	Net Price
Q560	GS-101 Capsule	£ 6.89
Q561	GS-1	11.79
Q562	GS-2	16.41
Q563	GS-3	23.90

Ester Oil

Code	Model	Net Price
Q565	GS-101/E Capsule	£ 7.74
Q566	GS-1/E	12.93
Q567	GS-2/E	18.01
Q568	GS-3/E	25.95

PAG Oil

Code	Model	Net Price
Q569	GS-101/PAG Capsule	£ 7.74
Q570	GS-1/PAG	12.93

Alkylbenzene Oil

Code	Model	Net Price
Q574	GS-1/LT	£ 12.93

The following table gives an approximate guide to Glo Stick Capacity. Multiple Glo Sticks can be used in larger systems.

Capsule	Refrigerant Charge Kgs	Oil Charge Litres
GS-101	Up to 1.3	Up to 0.4
GS-1	1.4 to 2.2	0.5 to 1.5
GS-2	2.3 to 4.5	1.6 to 3.0
GS-3	4.6 to 11.3	3.1 to 7.6



Soldering & Brazing Torches

Brazing Kits

Code	Description	Net Price
Q452	Super Fire 2 Torch (Piezo ignition)	£ 61.28
Q453	Trigger Torch with Holster	69.37
Q455	Rofire Swivel Pro Twin Burner	64.19



Brazing Gas

Code	Type	Net Price
Q465	PT-1 Butane (Red)	£ 6.80
Q466	MT-1 Mapp gas (Yellow)	9.88



Turbo 1000 Brazing Kit

An Oxygen/Maxi Gas Brazing Kit capable of temperatures up to 3000 degrees centigrade. Both the oxygen and maxi gas are supplied in non returnable canisters.

Code	Model	Net Price
Q530	Turbo 1000 Brazing Kit	£ 105.95
Q532	Oxygen Refill for Turbo 90	16.50
Q533	Maxy Gas Refill for Turbo 90	9.99



Solder & Brazing Accessories

Silver Solder 40% Cadmium free Silver Alloy FLUX COATED

Code	Description	Net Price
Q684	440 2 mm 5 Sticks	£ 27.65
Q685	440 2 mm 1 Kg	454.61

Brazing Alloys

Special quality hard solder, not standardised, similar to DIN EN 1044, with low silver content, matched to normally-stressed copper pipe system, ideal for capillary gap soldering

Code	Description	Net Price
Q814	Rolot Rothenberger S2 1Kg	£ 26.95
Q815	Lawton S2 Brazing Rod 1Kg	24.49
Q775	Phoson PK 10 (silver bearing alloy for copper to copper)	9.85

Flux Powder

Code	Description	Net Price
Q693	Flux Powder 250g	£ 8.64



Rothenberger Brazing Mats

200 x 300mm. A high temperature soldering pad with vermiculite coating. Protects work areas up to 1260°C.

Ecomab® Class 'O' Infill Wipe-Clean Back
Will withstand heat up to 1260 °c

Code	Description	Net Price
Q480	Rothenberger Super Mat 1260 °c 30x20	£ 18.99
Q481	Rothenberger Professional Carbon Fibre Mat 1400 °c 25x25	10.12



Regin Turbo Brazing Mat

Asbestos free brazing mat.
Will withstand heat up to 1300 °C

Code	Description	Net Price
Q479	Regin Premier 12" x 7-1/2" Brazing Mat 29x19	£ 17.12



Pyrocool Gel

Pyrocool gel is a colourless, odourless gel that protects all surfaces during soldering, brazing or welding. It protects existing joints from heat transfer effects. Optimal consistency; sticks to most surfaces. Reduces the risk of damage to sensitive parts. Dissipates heat and reduces the risk of fire. Can be used on Copper, Steel and Aluminium pipe work and is non corrosive.

Code	Description	Net Price
Q485	PyroCool Gel 1 litre	£ 23.94



Abrasive Products

Abrasive products for cleaning tube and fittings prior to brazing.

Code	Description	Net Price
Q632	Abrasive Mini Strips Med Grade (Pack of 10) Waterproof, Open Nylon Mesh	£ 10.01
Q633	Grip Cut 1-1/2" x 5 yds Roll	11.49



Bulk Deals available on these Products



IdroFan Fan Coil Units

Carrier's range of high performance Fan Coil Units includes compact ducted units, and floor-standing and ceiling-mounted cassette-based systems



AquaSnap Chillers

Carrier's range of modular packaged condensing units are based on R410A refrigerant, and offer exceptionally quiet performance and excellent efficiency.



Carrier's Spare Parts

We supply everything from new and remanufactured compressors, replacement components, to consumables such as filters and driers, and servicing tools.

When plant breaks down, we understand that speed of response is vital. Therefore, we offer next day delivery to ensure you get the parts you need to get plant up and running quickly.

We keep large stocks of all key items, to ensure availability and immediate despatch. We also operate a critical stock list and customer stores stocking service, to ensure vital parts are always available in the event of an unforeseen breakdown.



Climate Controls and Spares are authorised Carrier Distributors



J&E Hall Cellar Cooling Systems

Overview of JCC2 Cellar Coolers

3 Years Warranty

The improved version of the JCC cellar coolers provide complete range of reliable, energy efficient units designed to maintain temperatures required in beer and wine cellars. The units operate down to 4°C making them suitable for extending the life of perishable goods like fruit, flowers and vegetables. General Specifications...

Refrigerant R410a

- Galvanised mild steel casing with polyester powder coating
- 6 fins per inch - brewery specification evaporator coils
- Condensing unit fitted with rotary compressor
- Low pressure switch fitted to all indoor unit models
- Standard electronic temperature controller across four models
- Suitable for wall or ceiling mounting without the use of additional brackets.



ICC Indoor Unit

Code	Description	Net Price
T450	JCC2-25E SPLIT SYSTEM	£ 899.00
T452	JCC2-40E	1149.00
T454	JCC2-50E	1369.00
T456	JCC2-60E	1539.00



Cellar Cooling System Quick Selection:

At following conditions: Based on typical UK cellar construction. 32°C ambient (21°C for below ground); 12.7°C db / 10°C wb. Max product load of 16 l/m3 entering room at max temp of 21°C. Product cooling time 24hrs plant running time of 18hrs a day

Above Ground Cellar: Room Temperature 10°C Ambient 27°C

Cellar Volume m³	ft³	Evaporator Unit	Condensing Unit	230/1/50 HRC Fuse	Cooling Capacity kW
20	704	JCC2-25E	J5LC15C	10	1.68
45		JCC2-40E	J5LC20C	10	2.96
60		JCC2-50E	J5LC25C	10	3.96
72		JCC2-60E	J5LC28C	10	4.92

Below Ground Cellar: Room Temperature 10°C Ambient 21°C

Cellar Volume m³	ft³	Evaporator Unit	Condensing Unit	230/1/50 HRC Fuse	Cooling Capacity Kw
32		JCC2-25E	J5LC15C	10	1.68
65		JCC2-40E	J5LC20C	10	2.96
106		JCC2-50E	J5LC25C	16	3.7
130		JCC2-60E	J5LC28C	16	4.92



Thermostats & Programmers

Code	Description	Net Price
C215	QEG1 Single Channel Timeswitch	£ 37.38
C216	QEG2 Twin Channel Programmer	40.37
C232	CH1 FEELING Digital Thermostat 1.5v AA LR6	
C200	RS1 Volt Free Rom Stat (Combi) Temperature Control range 10°C to 30°C	9.54
C201	PCS Pipe/Cylinder Stat	10.32
C202	FSN Frost Stat	10.29
C230	RF205 Duo Radio Frequency Thermostat The RF205 RF Thermostat can be used as non-programmable or Programmable	39.75
C231	Famoso RF601 Mechanical Radio Frequency Thermostat	88.20

Compliance Pack Part L

Code	Description	Net Price
C235	Compliance Pack Part L	£ 74.75

A complete pack containing a 22mm magnetic filter, 15mm electrolytic scale inhibitor, 500ml cleaner and 500ml inhibitor.

Thermostatic Radiator Valves

Fully reversible• For flow or return• Vertical or horizontal head• Range 8°C to 32°C
 • Easy fit to suit 10-15mm• Liquid sensor• Chrome plate body• Frost protection setting
 • Standard 1/2" tail• Maximum working pressure 10 bar

Code	Description	Net Price
C209	TRV2 10/15mm White/Chrome TRV	£ 4.86
C207	TRV2 + Lockshield Pack 10/15mm White/Chrome	7.85
C220	TRV+ Lockshield Pack Straight Chrome	13.44
C221	TRV+ Lockshield Pack Angled Chrome	12.85
C222	TRV Chrome Angled	10.12

Motorised Valves

Two port spring return valve with 22mm or 28mm-fittings and auxiliary switch (SPST) Mid-position spring return valve with 22mm or 28mm fittings and 3Amp auxiliary switch (SPST)
 • Switch rating 3Amp• Supply voltage 240V AC• Industry standard cable colours• Manual override lever

Code	Description	Net Price
C203	2 Port Zone Valve 22mm	£ 43.06
C204	2 Port Zone Valve 28mm	48.97
C205	3 Port Mid Position Valve 22mm	44.95
C206	3 Port Mid Position Valve 28mm	49.75

Like for like replacement with Honeywell Motorised Valves

Central Heating Chemicals

Inhibitor, Universal Cleanser and Silencer • Suitable for all systems including aluminium
 • Non - acid, non caustic - safe to handle•0.5 litre treats up to 10 radiators (100 litres• Controls scale and maintains boiler efficiency

Code	Type	Net Price
M044	Triple x Central Heating Inhibitor	£ 7.95
M045	Triple x Central Heating Cleaner	8.25
M046	Triple x Central Heating Silencer	8.25
M041	Triple x Central Heating Leak Sealer	8.25



We have the full range of Daikin Air Conditioning Units available to buy online at www.daikinonline.co.uk or over the phone on 01752 894777.

Whether it's Daikin Wall Mounted Inverters, Ceiling Cassette Inverters, Ceiling Suspended Air Conditioning Units, Solar Thermal Panels or Floor Mounted Inverters and even a built in DC Ducted Smart / Classic Inverter, you have come to the right place. If you are looking for Daikin Spares, Parts or Accessories we can normally supply these on a next day delivery.

Free Delivery on Daikin Spares & Equipment.

Daikin Air Conditioning Inverters and parts are optimised for seasonal efficiency. Along with intuitive and user friendly controls our Daikin units adjust humidity, purify rooms, and channel in fresh air from outside to keep environments clean and in balance through removing harmful waste and exhaust fumes from the air.

Daikin has a solution for all your needs:

Seasonal Smart: Offers top seasonal efficiency.

It meets the needs of projects requiring high flexibility such as longer piping lengths, a wider operating range or EDP applications. Efficiency and comfort can be further enhanced with selectable evaporating and condensing temperatures.

Seasonal Classic: Offers performance and an effective solution for most applications and are now suitable for Low Ambient

Seasonal Inverter: Offers an effective solution for budget applications



Inverter control optimises efficiency



R22 Replacement Technology



CLIMATE CONTROLS & SPARES UK LTD

C1 Partnership Scheme

Find out how to become one of our Prestigious “C1 Partners”
www.daikinonline.co.uk



The C1 partnership is available to our customers who want to work in Partnership and are committed to developing a mutually beneficial and rewarding business relationship. This scheme is available to our loyal customers who are committed to developing their Daikin equipment sales through Climate Controls and Spares UK Ltd.

New for 2016 FTX-KV Wall Mounted Inverters

Product features

- Discreet, stylish front panel blends easily with the wall, and matches all interior décors
Online controller: control your indoor from any location with an app, via your local network or internet
- Dry programme allows humidity levels to be reduced without variations in room temperature
- Up to 2 indoor units can be connected to 1 multi outdoor unit; all indoor units are individually controllable and do not need to be installed in the same room or at the same time
- Daikin outdoor units are neat, sturdy and can easily be mounted on a roof or terrace or simply placed against an outside wall
- Outdoor units are fitted with a swing compressor, renowned for its low noise and high energy efficiency
- Outdoor units for pair application

